

CODES

2018 INTERNATIONAL BUILDING CODE (IBC) WITH LOCAL AMENDMENTS
2018 INTERNATIONAL EXISTING BUILDING CODE (IEBC) WITH LOCAL AMENDMENTS
2018 INTERNATIONAL FIRE CODE (IFC) WITH LOCAL AMENDMENTS
2018 INTERNATIONAL FUEL GAS CODE (IFGC) WITH LOCAL AMENDMENTS
2018 NFPA 54 NATIONAL FUEL GAS CODE WITH LOCAL AMENDMENTS
2018 INTERNATIONAL MECHANICAL CODE (IMC) WITH LOCAL AMENDMENTS
2021 UNIFORM PLUMBING CODE (UPC) WITH LOCAL AMENDMENTS
2018 WASHINGTON STATE ENERGY CODE (WSEC) WITH LOCAL AMENDMENTS
ICC A117.1-2009 ACCESSIBLE AND USABLE BUILDINGS AND FACILITIES WITH LOCAL AMENDMENTS
WA FIRE SPRINKLER CODE NFPA 13, 2016 WITH LOCAL AMENDMENTS

NOTE:
THIS PROJECT IS LOCATED IN A SEISMIC REGION WITH SEISMIC DESIGN CATEGORY D. CONTRACTOR TO PROVIDE AND INSTALL THE APPROPRIATE SEISMIC DESIGN AS REQUIRED PER CODE. ALL SEISMIC RESTRAINTS SHALL BE RATED AND APPROVED FOR SEISMIC DESIGN RATING FOR THE SITE AND INSTALLED PER MANUFACTURER'S RECOMMENDATIONS IN ORDER TO MAINTAIN RATING.

VICINITY MAP

GOOGLE EARTH © 2023

717 76th Ave SW, Tumwater, WA 98501

GOOGLE MAPS © 2023

717 76th Ave SW, Tumwater, WA 98501

PROJECT DESCRIPTION

PROJECT CONSISTS OF SELECTIVE DEMOLITION RELATED TO CARRIER ENTRANCE AND PATH OF TRAVEL ACCESSING CARRIER VEHICLES, AND INCLUDES THE ADDITION OF THREE NEW CARRIER VESTIBULES. WORK ALSO INCLUDES FINISH AND FURNISHING UPDATES TO CARRIER RELATED ROOMS INCLUDING, BUT NOT LIMITED TO RESTROOMS, BREAK ROOMS, WORK FLOOR, AND SUPERVISOR OFFICES. ALL CARRIER RESTROOMS WILL RECEIVE ONE-FOR-ONE REPLACEMENT OF FIXTURES AND ACCESSORIES. THE RESTROOM ASSOCIATED WITH THE LOCKER ROOMS WILL BE MADE TO CONFORM TO ACCESSIBILITY STANDARDS WITH ANY REQUIRED FIXTURE RELOCATION. ALL EXHAUST FANS WILL BE REPLACES THROUGHOUT THE BUILDING AND ANY ADDITIONAL HVAC UPDATES WILL BE MADE PER BUILDING FUNCTIONALITY. ALL NOTED LIGHT FIXTURES WILL BE REPLACED WITH LED.

PROJECT CONTACTS

ARCHITECT:
GPD GROUP, PROFESSIONAL CORPORATION
520 SOUTH MAIN STREET, SUITE 2531
ARLINGTON, OH 44111
CONTACT: DON LOSE
216.927.8665
dlose@gpdgroup.com

GENERAL CONTRACTOR:
T.B.D.

CONSTRUCTION MANAGEMENT:
PATRIOT CONSTRUCTION MANAGEMENT
6001 COCHRAN ROAD
CLEVELAND, OH 44139
CONTACT: TONY ZIRCHER
419.953.3557
tony.zircher@patriotcm.com

USPS - OLYMPIA, WA - SDC

717 76TH AVENUE SW TUMWATER, WA 98501

ACTIVATION NOTE:
Activation Scope Of Work as defined by Patriot Construction Management must be completed by 06-01-24. Confirm with Construction Manager.

SYMBOL LEGEND

ROOM NAME ROOM NAME
ROOM NUMBER

MATCH LINE

BREAK MARK

CONTROL POINT

DATUM MARK

WALL TAG

WINDOW TAG

DOOR TAG

CEILING TAG

CEILING HEIGHT

WALL SECTION MARK

BUILDING SECTION MARK

ELEVATION TAGS

ENLARGED PLAN OR DETAIL

REVISION CLOUD

COLUMN DESIGNATION

SHEET KEYNOTE INSTRUCTIONS

SHEET KEYNOTES ARE NOTED WITHIN THE GRAPHIC AREA OF THE DRAWING. THESE ARE REPRESENTED BY A NUMBER SURROUNDED BY A HEXAGON, WITH OR WITHOUT A LEADER. A LEGEND ON THE RIGHT SIDE OF THE PAGE LISTS THE NOTES IN NUMERICAL ORDER.

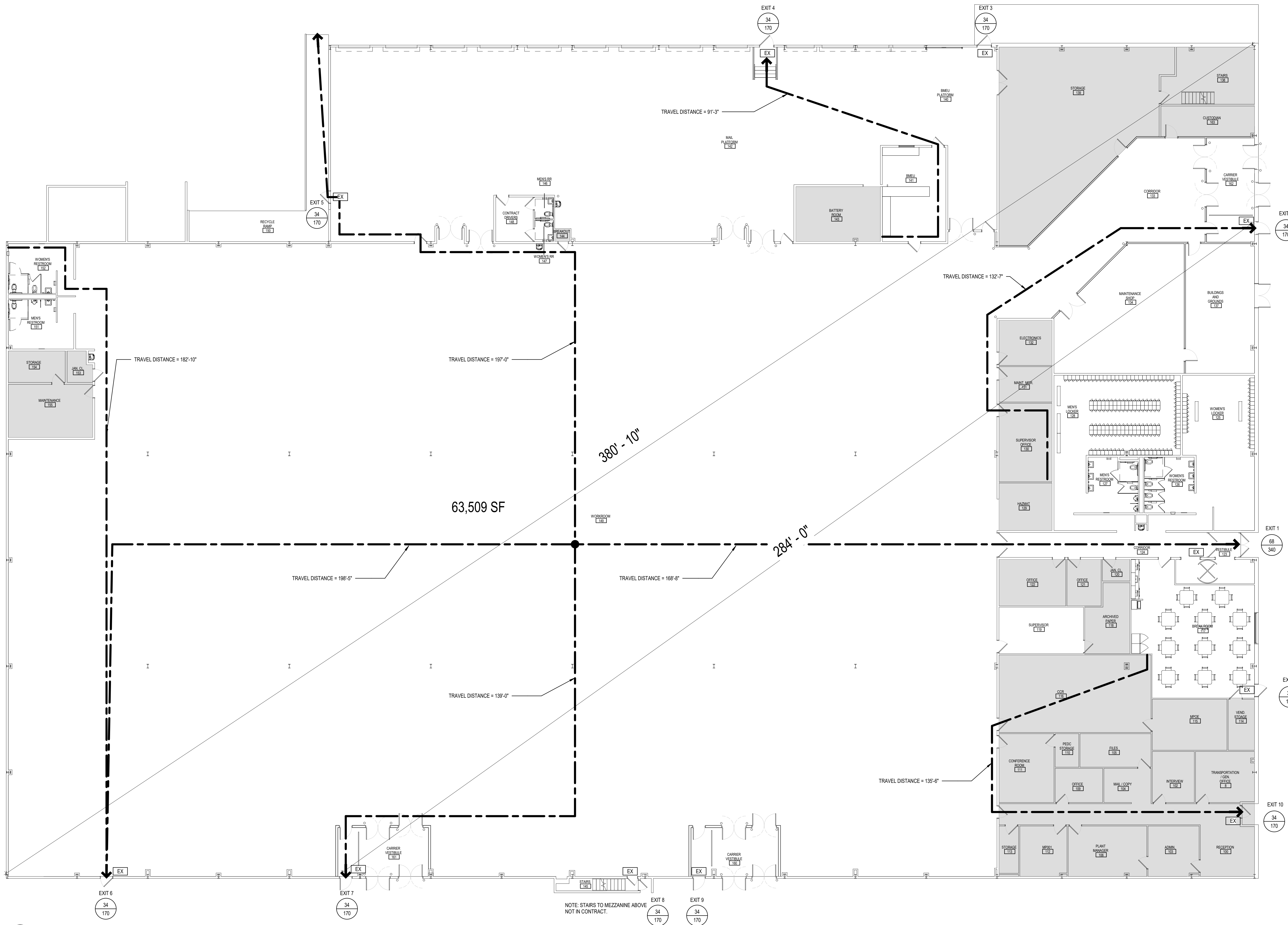
EXAMPLE: 1. ALIGN NEW CONSTRUCTION WITH THE FACE OF EXISTING CONSTRUCTION.

ABBREVIATIONS

A AB ANCHOR BOLT AC AIR CONDITIONING AC ALTERNATING CURRENT ACC ACCESSIBLE ACI AMERICAN CONCRETE INSTITUTE ADA AMERICANS WITH DISABILITIES ACT ADJ ADJUSTABLE AFF ABOVE FINISHED FLOOR AISC AMERICAN INSTITUTE OF STEEL ALUM ALUMINUM AMP AMPERE, AMPS ARCH ARCHITECT, ARCHITECTURAL ASHRAE AMERICAN SOCIETY OF HEATING, REFRIGERATION, AND AIR CONDITIONING ENGINEERS ASTM AMERICAN SOCIETY OF TESTING AND MATERIALS	B BLDG BUILDING BM BEAM BOT BOTTOM BTU BRITISH THERMAL UNIT BOF BOTTOM OF FOOTING BRG BEARING	C CF CUBIC FEET CD CONDENSATE CERTS CERTIFICATES CFM CUBIC FEET PER MINUTE CKT CIRCUIT CL CENTERLINE CLG CLEAR OR CLEARANCE CMU CONCRETE MASONRY UNIT CO CLEANOUT COL COLUMN CONC CONCRETE, CONCENTRIC CONT CONTINUOUS, CONTINUATION COORD COORDINATE CJ CONTROL JOINT CLR CLEAR, CLEARANCE CTR CENTER CV CHECK VALVE CW COLD WATER	D DBL DOUBLE DC DIRECT CURRENT DEG DEGREES DEFS DIRECT-APPLIED EXTERIOR FINISH SYSTEM	E EA EACH EF EXHAUST FAN EJ EXPANSION JOINT ELEV ELEVATION EIFS EXTERIOR INSULATION AND FINISH SYSTEM ELEC ELECTRICAL EMBED EMBEDMENT EMP EMPLOYEE EMS ENERGY MANAGEMENT SYSTEM ENCL ENCLOSURE EOD EDGE OF DECK EQ EQUAL EQUIP EQUIPMENT ETR EXISTING TO REMAIN EXH EXHAUST EXP EXPANSION EXIST EXISTING EXT EXTERNAL, EXTERIOR EW EACH WAY EWC ELECTRIC WATER COOLER	F FA FIRE ALARM FACP FIRE ALARM CONTROL PANEL FCO FLOOR CLEANOUT FD FIRE DAMPER, FLOOR DRAIN FIN FINISH (ED) FIT FUTURE FON FOUNDATION FLG FLANGE FTG FOOTING FF FINISHED FLOOR FLR FLOOR FR FIRE-RETARDANT-TREATED FRP MATERIALS FRP FIBERGLASS REINFORCED PANEL FT FOOT, FEET	G GA GAUGE GALV GALVANIZED GC GENERAL CONTRACTOR GB GRADE BEAM GWB GYPSUM WALL BOARD GAB GRADED AGGREGATE BASE GYP GYPSUM WALL BOARD	H HGT HEIGHT HORIZ HORIZONTAL HP HORSEPOWER OR HIGH POINT HTR HEATER HVAC HEATING, VENTILATING AND AIR CONDITIONING HDW HARDWARE	I ID INSIDE DIAMETER IE INVERT ELEVATION INT INTERIOR IN I INCH, INCHES NSUL INSULATION	J J-BOX JUNCTION BOX JT JOINT JST JOIST	K k KIPS (1000 LBS) KV KILOVOLT KVA KILOWATT-AMPS KW KILOWATT KWH KILOWATT-HOUR	L LB POUNDS LF LINEAR FOOT LL LIVE LOAD, LANDLORD LLH LONG LEG HORIZONTAL LVV LONG LEG VERTICAL LOG LOOK-OUT GALLERY LONG LONGITUDINAL LOW LOW POINT LTG LIGHTING LWC LIGHT WEIGHT CONCRETE L LENGTH	M MAX MAXIMUM MDP MAIN DISTRIBUTION PANEL MECH MECHANICAL MEZZ MEZZANINE MFR MANUFACTURER MIN MINIMUM MLO MAIN LUGS ONLY MO MASONRY OPENING MSB MAIN SWITCHBOARD MTD MOUNTED	N N/A NOT APPLICABLE NEC NATIONAL ELECTRICAL CODE NEMA NATIONAL ELECTRICAL MANUFACTURER'S ASSOC. NFPA NATIONAL FIRE PROTECTION ASSOCIATION NIC NOT IN CONTRACT NL NIGHT LIGHT NO NUMBER NOM NOMINAL NTS NOT TO SCALE	O OA OUTSIDE AIR OC ON CENTER OCC OCCUPANTS OF OUTSIDE FACE OD OUTSIDE DIAMETER OH OPPOSITE HAND PNG OPENING OSB ORIENTED STRAND BOARD OSHA OCCUPATIONAL SAFETY AND HEALTH ADMINISTRATION	P PAR PARALLEL PC PIECE PDU POWER DISTRIBUTION UNIT PH PHASE PL PLATE PLBG PLUMBING PNL PANEL PIV POST INDICATOR VALVE PSF POUNDS PER SQUARE FOOT PVC POLYVINYL CHLORIDE PLYWOOD	Q Q QUANTITY	R RA RETURN AIR RF RADIUS RCP REFLECTED CEILING PLAN RD ROOF DRAIN REF REFERENCE, REFER REIN REINFORCING REQD REQUIRED RO ROUGH OPENING RPM REVOLUTIONS PER MINUTE RTU ROOFTOP UNIT	S SCHD SCHEDULED SD SMOKE DAMPER, STORM DRAIN SECT SECTION S SENSOR SF SQUARE FEET SHT SHEET SIM SIMILAR SMT SHEET METAL SPECIFICATION SPEC SQUARE SQ STAINLESS STEEL, SANITARY SEWER STD STANDARD STD STEEL STL STIFF STR STRIPPER STRUCT STRUCTURAL SUSP SUSPENDED SJ SAW JOINT	T TAB TOP AND BOTTOM T/FTG TOP OF FOOTING TEMP TEMPERATURE THICK THICKNESS THRESH THRESHOLD TO TOP OF TOJ TOP OF JOIST TOS TOP OF STEEL THRU THROUGH T THERMOSTAT TYP TYPICAL T THICKNESS (STRUCT) TS TUBULAR STEEL (STRUCT) TRS TRUSS (STRUCT)	U UL UNDERWRITERS LABORATORIES, INC. UNLESS OTHERWISE NOTED UPS UNINTERRUPTIBLE POWER SUPPLY	V V VOLT VA VOLT-AMPERE VERT VERTICAL VF VENT IN FIELD VRC VERTICAL RECIPROCATING CONVEYOR VENT VENT THROUGH ROOF	W W WIDTH W/ WITH W/O WITHOUT WCO WALL CLEANOUT WCL WATER CLOSET WD WOOD WL WIND LOAD WP WEATHERPROOF WO WALL OPENING WV WELDED WIRE FABRIC WF WIDE FLANGE (STRUCT)	X XFMR TRANSFORMER	Y Y YARD
--	--	--	--	--	---	--	---	---	---	---	--	---	--	---	--	------------------------	--	---	--	--	--	---	------------------------------	--------------------

DRAWING INDEX

SHEET NUMBER	SHEET NAME
TS-001	COVER SHEET
G-001	LIFE SAFETY PLAN & CODE REVIEW
G-002	TYPICAL MOUNTING HEIGHTS
G-003	AREAS OF RESPONSIBILITY
S-001	GENERAL STRUCTURAL NOTES
S-111	STRUCTURAL PLANS AND DETAILS
AD-101	DEMOLITION PLAN
AD-401	ENLARGED DEMOLITION PLANS
A-100	ARCHITECTURAL SITE PLAN
A-101	FLOOR PLAN
A-102	FINISH FLOOR PLAN
A-201	EXTERIOR ELEVATIONS
A-401	ENLARGED PLANS
A-402	ENLARGED PLANS
A-501	SCHEDULES & DETAILS
A-502	REFERENCE PHOTOS
P-001	PLUMBING LEGEND, SCHEDULES, AND DETAILS
P-002	PLUMBING OVERALL PLAN
P-101	PLUMBING ENLARGED PLANS
M-001	MECHANICAL LEGEND, SCHEDULES, AND DETAILS
M-101	MECHANICAL PLAN - AREA A
M-102	MECHANICAL PLAN - AREA B
M-103	MECHANICAL PLAN - AREA C
M-104	MECHANICAL PLAN - AREA D
E-001	ELECTRICAL LEGEND
E-101	ELECTRICAL - LIGHTING PLAN - AREA A
E-102	ELECTRICAL - LIGHTING PLAN - AREA B
E-103	ELECTRICAL - LIGHTING PLAN - AREA C
E-104	ELECTRICAL - LIGHTING PLAN - AREA D
E-111	ELECTRICAL - PHOTOMETRIC PLAN - AREA A
E-112	ELECTRICAL - PHOTOMETRIC PLAN - AREA B
E-113	ELECTRICAL - PHOTOMETRIC PLAN - AREA C
E-114	ELECTRICAL - PHOTOMETRIC PLAN - AREA D
E-201	ELECTRICAL - POWER PLAN - AREA A
E-202	ELECTRICAL - POWER PLAN - AREA B
E-203	ELECTRICAL - POWER PLAN - AREA C
E-204	ELECTRICAL - POWER PLAN - AREA D
E-501	ELECTRICAL DETAILS
E-502	ELECTRICAL DETAILS
ED-101	ELECTRICAL - DEMOLITION PLAN
FP-101	FIRE PROTECTION PLAN



1 LIFE SAFETY PLAN
3/32" = 1'-0"

GENERAL NOTES

- ALL PENETRATIONS THROUGH FIRE-RATED ASSEMBLIES SHALL BE FIRESTOPPED AND SEALED WITH APPROVED MATERIALS TO MAINTAIN FIRE RATINGS.
- THE LIFE SAFETY PLANS ARE DIAGRAMMATIC ONLY. THEIR PURPOSE IS SOLELY TO REPRESENT THE LIFE SAFETY COMPONENTS FOR THE PROJECT. THE GENERAL CONTRACTOR SHALL USE THE CONSTRUCTION DOCUMENTS FOR THE IMPLEMENTATION OF THE REQUIRED LIFE SAFETY COMPONENTS.
- THE CONTRACTOR SHALL MAINTAIN ALL MEANS OF EGRESS FOR THE DURATION OF THE PROJECT. THE CONTRACTOR SHALL PROVIDE COVERED WALKS TO MAINTAIN EGRESS AND SAFE PASSAGE FROM THE BUILDING TO THE PUBLIC WAY AND AS REQUIRED BY THE AUTHORITY HAVING JURISDICTION.
- THE CONTRACTOR SHALL PROVIDE TEMPORARY PROTECTION WHILE WORKING IN THE SPACES BELOW OR ABOVE THE AREA OF THE PROJECT.
- THE CONTRACTOR SHALL PROVIDE BARRIERS, TEMPORARY PARTITIONS TO PROTECT OCCUPANTS FROM PHYSICAL HAZARD AND NOISE DURING THE PROJECT.
- THE CONTRACTOR SHALL DETERMINE THE LOCATION OF CONSTRUCTION DOORS IN CONSTRUCTION BARRIERS, DOORS AND FRAMES IN CONSTRUCTION BARRIERS TO BE GASKETED, HOLLOW METAL DOORS TO BE SELF-CLOSING AND LOOKABLE.
- THE CONTRACTOR SHALL COORDINATE DEMOLITION OF EXISTING CONSTRUCTION TO MINIMIZE DISRUPTION OF BUILDING OPERATIONS.
- THE CONTRACTOR SHALL ADVISE THE ARCHITECT IMMEDIATELY UPON DISCOVERY OF ANY LIFE SAFETY COMPONENT THAT IS SHOWN ON THE LIFE SAFETY PLANS BUT HAS NOT TO BE INCLUDED IN CONSTRUCTION DOCUMENTS.
- THE EXISTING TO REMAIN PORTIONS OF THE PROJECT WERE PROVIDED TO THE ARCHITECT BY THE OWNER. THE ARCHITECT TAKES NO RESPONSIBILITY FOR THE ACCURACY BEYOND THE LIMITS OF CONSTRUCTION AS DEFINED IN THE CONSTRUCTION DOCUMENTS.
- CONTRACTOR IS REQUIRED TO COORDINATE FINAL LOCATION AND QUANTITY OF FIRE EXTINGUISHERS WITH AUTHORITY HAVING JURISDICTION. (FIRE EXTINGUISHERS ARE TO BE OWNER SUPPLIED, CABINETS AND BRACKETS ARE TO BE PROVIDED AND INSTALLED BY CONTRACTOR).
- PROVIDE 2 x DRICON (OR APPROVED EQUAL) FIRE RETARDANT TREATED WOOD BLOCKING BEHIND GYP. BO. AT ALL FIXTURES, MILLWORK AND EQUIPMENT THAT REQUIRES WOOD BLOCKING FOR INSTALLATION. REPLACE ALL WATER DAMAGED OR DAMAGED BLOCKING UNCOVERED DURING DEMOLITION AS REQUIRED.

PHASING NOTE:

- CONTRACTOR SHALL ONLY RENOVATE A SINGLE RESTROOM AT A TIME. ONE MEN'S AND ONE WOMEN'S. ALL OTHER RESTROOM LOCATIONS AT THE SITE SHALL REMAIN IN SERVICE UNTIL RENOVATIONS OF THE RESTROOM OUT OF SERVICE ARE COMPLETE.
- GC TO PROVIDE MOBILE PORTABLE RESTROOM TRAILER FOR THE EXTENT OF THE PROJECT. GC TO COORDINATE WITH USPS FOR EXACT LOCATION. ENSURE QUANTITIES OF FUTURE MEETS ALL REQUIREMENTS STATED ON G-001 LIFE SAFETY SHEET.

LIFE SAFETY PLAN LEGEND

- X
Y
- X - ACTUAL CLEAR WIDTH OF LIMITING COMPONENT (INCHES)
Y - EXIT CAPACITY
- PATH OF TRAVEL TO EGRESS
- EX POSTED EGRESS SIGN
- REMODEL WORK OR AREA OF NO WORK DOES NOT ADVERSELY AFFECT EGRESS

CODE INVESTIGATION

PREVIOUSLY PERMITTED UNDER 1994 (PER EXISTING DWGS) STANDARD BUILDING CODE AND NFPA 101 LIFE SAFETY CODE 1995 EDITION.

CHAPTER 3: USE & OCCUPANCY CLASSIFICATION (NO CHANGE)

GENERAL POST OFFICE / MAIL FACILITY:
BUSINESS OCCUPANCY (B) (NO CHANGE)

CHAPTER 5: GENERAL BUILDING HEIGHTS AND AREAS
BUILDING AREA = UNLIMITED (NO CHANGE)

(SECTION 507.4 SPRINKLERED: ONE-STORY BUILDING - THE AREA OF GROUP B, E, M OR S BUILDING NO MORE THAN ONE STORY ABOVE GRADE PLANE OF ANY CONSTRUCTION TYPE SHALL NOT BE LIMITED WHERE THE BUILDING IS PROVIDED WITH AN AUTOMATIC SPRINKLER SYSTEM THROUGHOUT AND IS SURROUNDED AND ADJACENT BY PUBLIC WAYS OR YARDS NOT LESS THAN 60 FT IN WIDTH)

CHAPTER 8: TYPE OF CONSTRUCTION (NO CHANGE)
TYPE 2B, UNPROTECTED, SPRINKLERED

CHAPTER 9: FIRE PROTECTION AND LIFE SAFETY SYSTEMS
SPRINKLER SYSTEM (MODIFICATION DUE TO NEW CONSTRUCTION)
FIRE ALARM (MODIFICATION DUE TO NEW CONSTRUCTION)

CHAPTER 10: MEANS OF EGRESS
BUSINESS AREA

63,509 SF / 150 SF PER OCCUPANT = 424 OCCUPANTS

1005.3.2 MEANS OF EGRESS SIZING - OTHER EGRESS COMPONENTS
TOTAL OCCUPANT LOAD (424) x 0.2 IN. PER OCCUPANT
84.8" REQUIRED, 408" PROVIDED

1006.3.2 MINIMUM NUMBER OF EXITS OR ACCESS TO EXITS PER STORY
OCCUPANT LOAD PER STORY (424)
2 REQUIRED, 11 PROVIDED

1007 EXIT AND EXIT DOOR CONFIGURATION
SEPARATION DISTANCE BETWEEN DOORS
380'-10" / 3 = 126'-11" MIN.
PROVIDED = 284'-0" PROVIDED

1017.2 EXIT TRAVEL DISTANCE
300'-0" PER 2020 WASHINGTON BLDG CODE 2018, WITH SPRINKLER SYSTEM

TABLE 2002.1 MINIMUM NUMBER OF REQUIRED PLUMBING FIXTURES
BUSINESS CLASSIFICATION

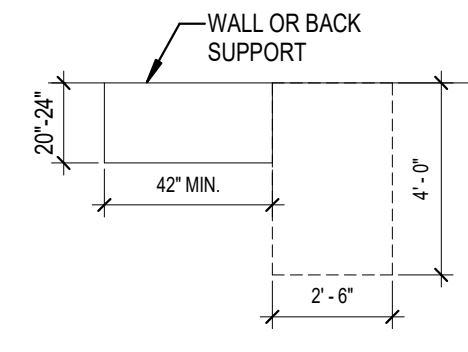
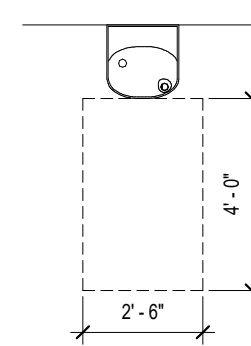
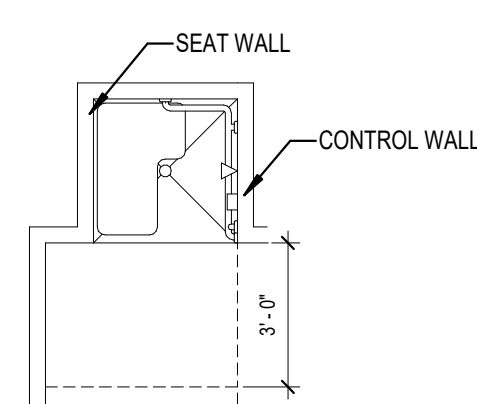
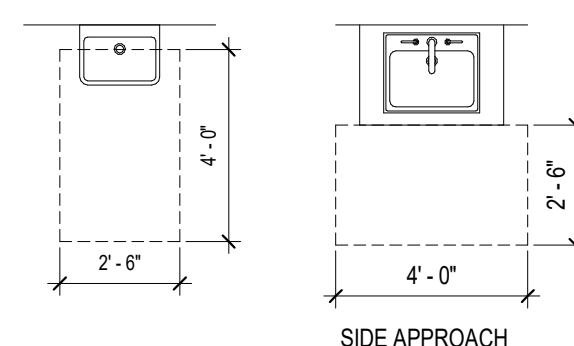
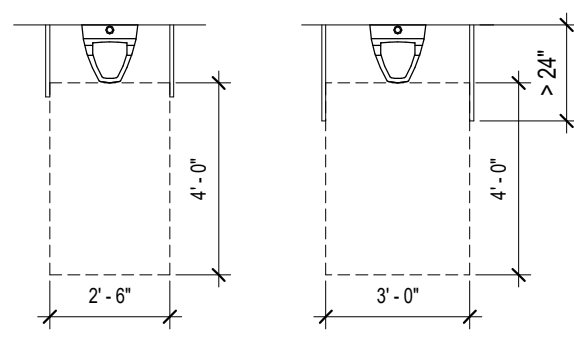
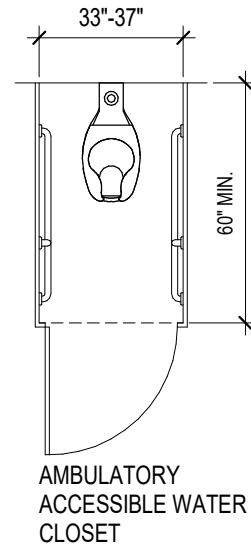
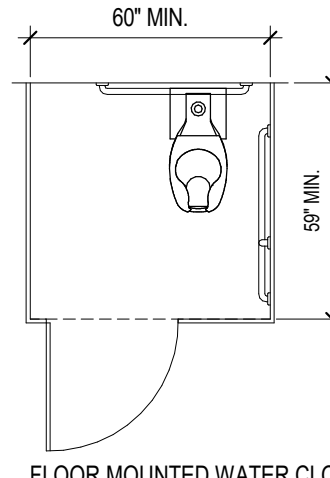
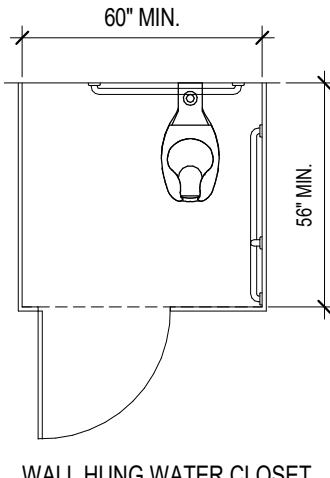
USPS CALCULATIONS FOR TOTAL EMPLOYEES AT THIS LOCATION

AT THE TIME OF PRODUCTION OF THIS SET OF DOCUMENTS, USPS WAS UNABLE TO PROVIDE CURRENT EMPLOYEE COUNTS FOR THIS LOCATION.

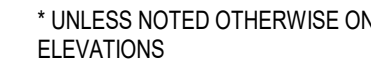
BASED UPON THE NUMBER OF FIXTURES PROVIDED, CROSS-REFERENCED WITH THE USPS FIXTURE COUNT STANDARDS, THE FOLLOWING IS CONCLUDED:

CURRENT MEN'S RESTROOM PROVIDES 7 FIXTURES, WHICH WILL ACCOMMODATE UP TO 190 MEN, BASED ON USPS STANDARDS.

CURRENT WOMEN'S RESTROOM PROVIDES 7 FIXTURES, WHICH WILL ACCOMMODATE UP TO 190 WOMEN, BASED ON USPS STANDARDS.

$$1/4'' = 1'-0''$$


2



3



4

EWC-1	DRINKING FOUNTAIN / BOTTLE FILLER
-------	-----------------------------------

PLUMBING FIXTURE / ACCESSORY LEGEND:

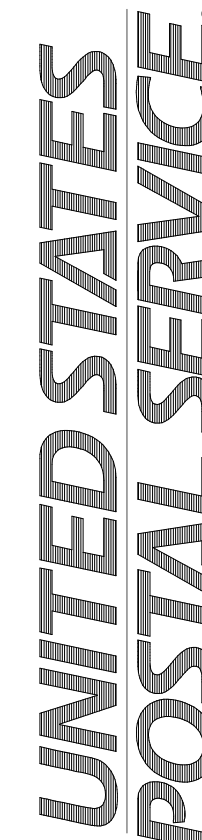
- THE INTENT OF THESE ELEVATIONS IS TO SHOW LOCATIONS OF MAJOR INTERIOR ELEMENTS. ELEVATIONS MAY NOT SHOW ALL ITEMS IN ALL ROOMS.
- USE INTERIOR DETAILS FOR FINISHES AND MATERIAL INFORMATION.
- CASEWORK SHALL HAVE A 4" BACKSLASH AND/OR DEEPSLASH AND A 7/8" TOE KICK UNLESS NOTED OTHERWISE (N.O.N.).
- ALL CABINETS SHALL BE HIGH SHELF HAVE ONE ADJUSTABLE SHELF. WALL CABINETS 25" OR HIGHER SHALL HAVE TWO ADJUSTABLE SHELVES UNLESS INDICATED OTHERWISE ON ELEVATIONS.
- BASE CABINETS SHALL HAVE ADJUSTABLE SHELVES AS INDICATED ON ELEVATIONS AND DETAILS (MINIMUM OF ONE SHELF).
- CABINET SHAVING SHALL BE FULL DEPTH. DRAWER BOXES SHALL BE FULL HEIGHT. PROVIDE AN UNDERCUT DRAWER BOX FOR ALL DRAWERS.
- INSTALL CHAIN SINKS IN ALL LOCATIONS WHERE CABINET DOOR IS ADJACENT TO A WALL OR CORNER OR OTHER OBSTRUCTION.
- IN ALL CASES, PANELS WHERE REQUIRED, INSTALL FULL PLENER PANEL AT WALL JUNCTURE TO ALLOW DOORS TO OPEN COMPLETELY (MINIMUM 10 DEGREES) IF REQUIRED BY CABINET CONSTRUCTION. BASE AND WALL CABINETS SHALL BE 24" DEEP UNLESS NOTED. WALL CABINETS SHALL BE 14" DEEP UNLESS NOTED. ALL CABINETS SHALL BE 18" HIGH UNLESS NOTED.
- WORKSURFACE, BRACKETS SHALL BE METAL WITH WIREWEAVING OPENING (HARDWARE WORKSHEET 100) OR 1/8" DIA. DRILLING (HARDWARE WORKSHEET 100). COLOR TO BE SELECTED BY ARCHITECT FROM MANUFACTURER'S FULL RANGE.
- INSTALL GROMMETS IN WORKSURFACES FOR ACCESS TO ELECTRIC AND DATA OUTLETS. COLOR TO BE SELECTED BY ARCHITECT FROM MANUFACTURER'S FULL RANGE.
- ALL OUTSIDE CORNERS OF GYPSUM BOARD SHALL HAVE A CORNER GUARD UNLESS O.N. CORNER GUARDS SHALL BE INSTALLED AT TOP OF BASE.
- FOR FINISH RUNS, CORNERS SHALL BE ROUNDED ENDS PANELS. PROVIDE FILLER AT LOCKERWALL JUNCTURE WHERE REQUIRED. COORDINATE WITH CASEWORK ABOVE WHERE APPLICABLE.
- PROVIDE 2" DIRECTION (OR APPROVED EQUAL) FIRE RETARDANT TREATED WOOD BLOCKING BEHIND GY. BD. AT ALL FIXTURES, MILLWORK AND EQUIPMENT THAT REQUIRES WOOD BLOCKING FOR FIRE RATION. BLOCKING SHALL BE WATER DAMAGED OR DAMAGED BLOCKING UNCOVERED DURING DEMOLITION AS REQUIRED.

Scale:

6

M

TYPICAL MOUNTING HEIGHTS



USPS - OLYMPIA, WA - SDC
717 76TH AVENUE SW

PROJECT MANAGER	DESIGNER
DL	DG

PRELIMINARY DRAFT
NOT FOR CONSTRUCTION,
BID, RELIANCE,
RECORDING PURPOSES OR
IMPLEMENTATION.

©Copyright 2006-2009, United States Postal Service



	R&A FUNDED
	SDC FUNDED
	NO WORK