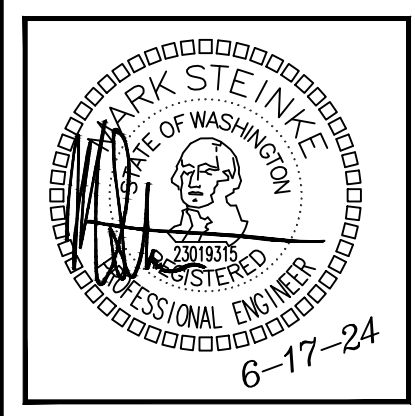


SITE PLAN - POWER
 SCALE: 1/16" = 1'-0"

NO.	DATE	DESCRIPTION	REVISIONS
1	06/17/24	PERMIT RESUBMITTAL	

ROBISON ENGINEERING, INC.
 19401 40TH AVE W, SUITE 302
 LYNNWOOD, WA 98036
 206-364-3343
 CONTACT: JOSH REDD



DRAWN:	JUR
DESIGNED:	JUR
CHECKED:	KC
APPROVED:	MS

PROJECT: **ST CHARLES BORROMEO PARISH OFFICES ADDITION**
 7112 S 12TH ST, TACOMA, WA 98466

19401 40TH AVE W, SUITE 302
 LYNNWOOD, WA 98036
 PHONE: (206)364-3343

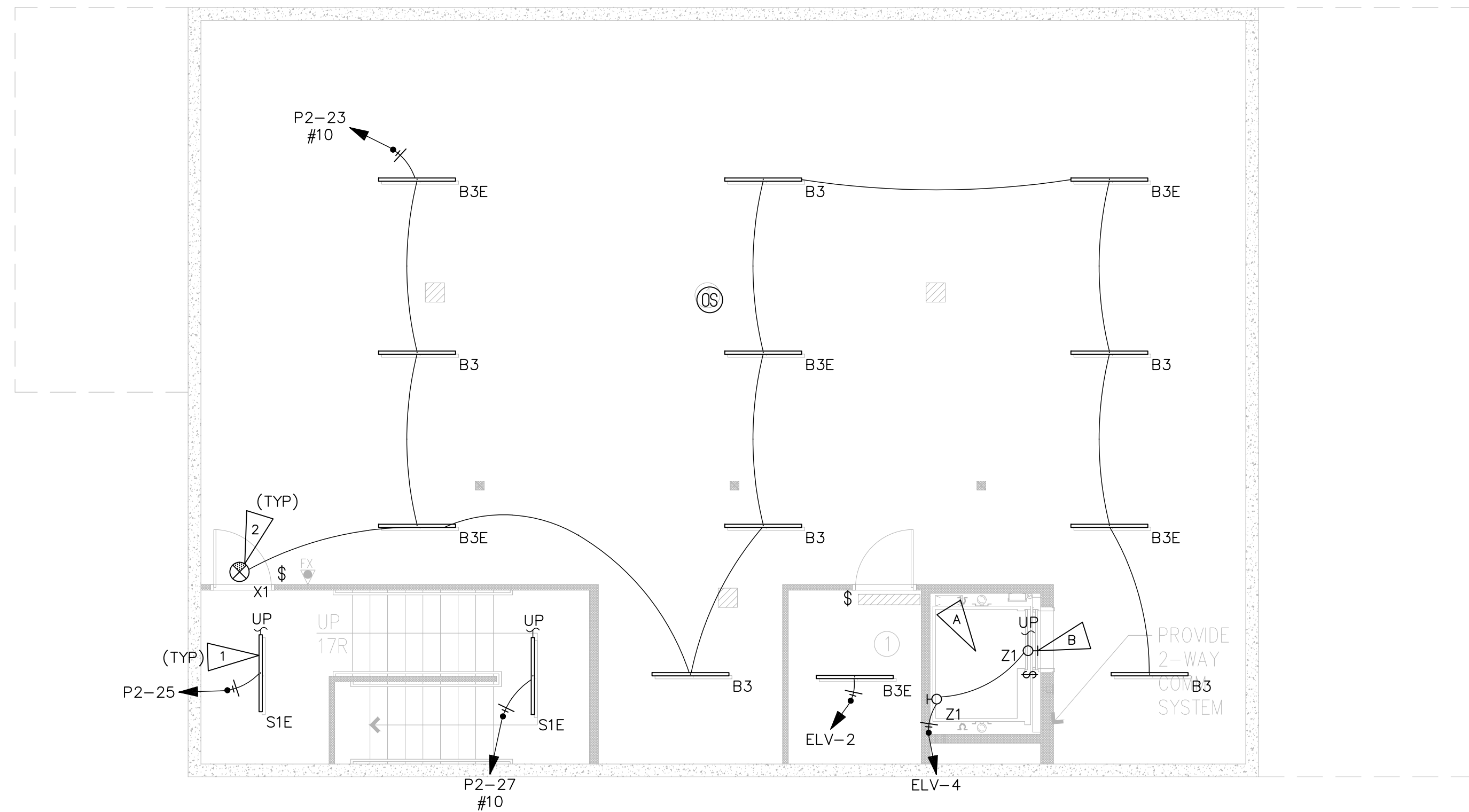
ROBISON ENGINEERING, INC.

DATE: 06/17/2024
 REI NO. 1145-008

SHEET TITLE:
 SITE PLAN - POWER

SHEET NO.
E0.10

City of Tacoma
 Reviewed for Code Compliance



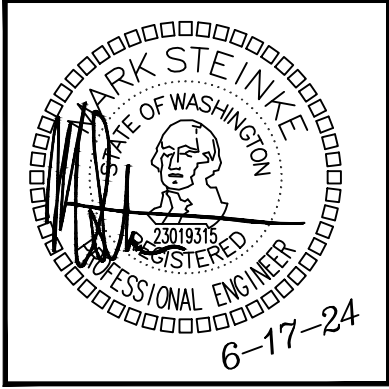
GENERAL NOTES
<ol style="list-style-type: none"> EMERGENCY EGRESS LIGHTING SHALL BE SUPPLIED BY EMERGENCY LUMINAIRES WITH 90 MINUTE BATTERY BACKUP. SEE SHEET E1.50 FOR LUMINAIRE SCHEDULE AND LIGHTING NOTES.
FLAG NOTES
<ol style="list-style-type: none"> CIRCUIT STAIRS VERTICALLY. LUMINAIRE(S) IN STAIRWELL SHALL HAVE INTEGRAL OCCUPANCY SENSOR WHICH REDUCES LIGHTING POWER OF FIXTURE(S) BY 50% WHEN SPACE IS VACANT FOR 15 MINUTES. (TYP) EXIT SIGNS: PROVIDE UNSWITCHED HOT.

SHEET NOTES
<ol style="list-style-type: none"> MOUNT PIT LIGHT SWITCH ADJACENT TO LADDER. USE ILLUMINATED HANDLE TYPE. DO NOT COMBINE CIRCUITS SERVING ELEVATOR, ELEVATOR PIT, OR ELEVATOR HOISTWAY WITH HOMERUNS FROM OTHER ROOMS/AREAS. (NEC 620.23-24). CIRCUIT ELEVATOR SHAFT VERTICALLY.

LIGHTING PLAN – BASEMENT

SCALE: 3/16" = 1'-0"

NO.	DATE	DESCRIPTION	REVISIONS
1	06/17/24	PERMIT RESUBMITTAL	



DRAWN: JUR	DESIGNED: JUR	CHECKED: KC	APPROVED: MS
------------	---------------	-------------	--------------

PROJECT: **ST CHARLES BORROMEO PARISH OFFICES ADDITION**
7112 S 12TH ST, TACOMA, WA 98466

19401 40TH AVE W, SUITE 302
LYNNWOOD, WA 98036
PHONE: (206)364-3343

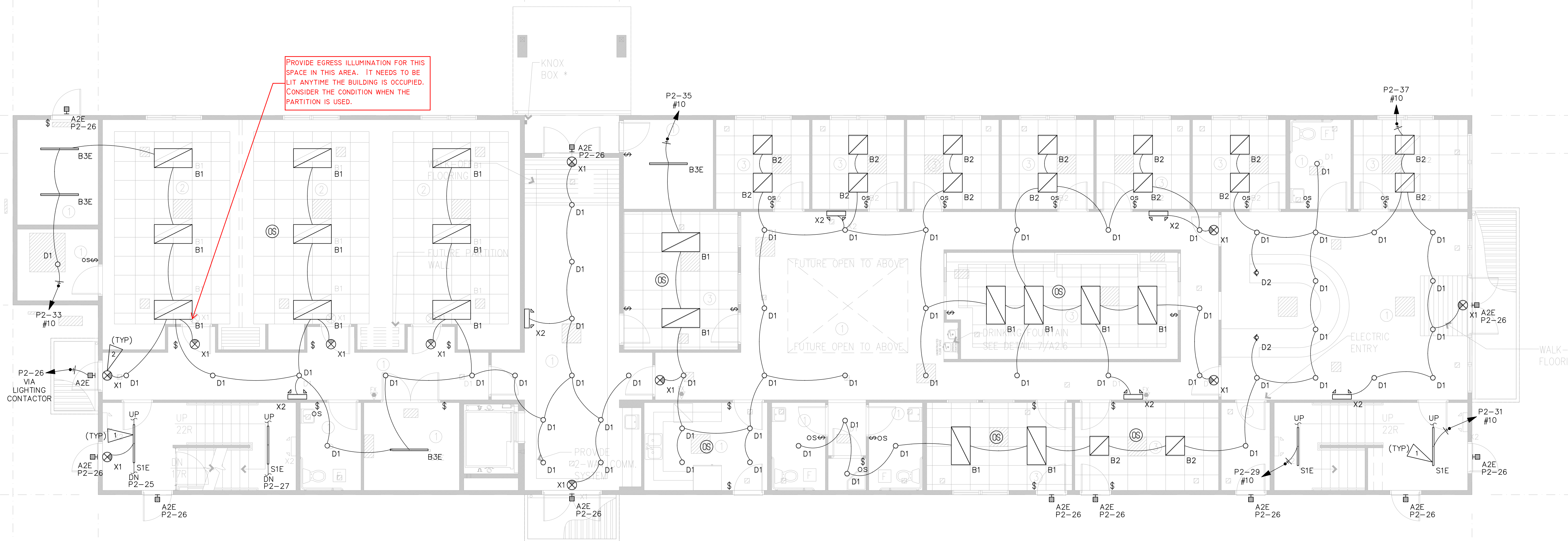
ROBISON ENGINEERING, INC

DATE: 06/17/2024
REI NO. 1145-008

SHEET TITLE:
LIGHTING PLAN - BASEMENT

SHEET NO.
E1.00

Reviewed for Code Compliance
City of Tacoma



GENERAL NOTES

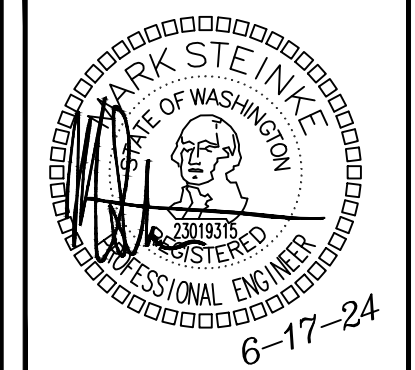
- EMERGENCY EGRESS LIGHTING SHALL BE SUPPLIED BY EMERGENCY LUMINAIRES WITH 90 MINUTE BATTERY BACKUP.
- SEE SHEET E1.50 FOR LUMINAIRE SCHEDULE AND LIGHTING NOTES.

FLAG NOTES

- CIRCUIT STAIRS VERTICALLY. LUMINAIRE(S) IN STAIRWELL SHALL HAVE INTEGRAL OCCUPANCY SENSOR WHICH REDUCES LIGHTING POWER OF FIXTURE(S) BY 50% WHEN SPACE IS VACANT FOR 15 MINUTES. (TYP)
- EXIT SIGNS: PROVIDE UNSWITCHED HOT.

LIGHTING PLAN - LEVEL 1
 SCALE: 3/16" = 1'-0"

NO.	DATE	DESCRIPTION	REVISIONS
1	06/17/24	PERMIT RESUBMITTAL	



JUR	JUR	KC	MS
DRAWN:	DESIGNED:	CHECKED:	APPROVED:

PROJECT: ST CHARLES BORROMEO PARISH OFFICES ADDITION
 7112 S 12TH ST, TACOMA, WA 98466

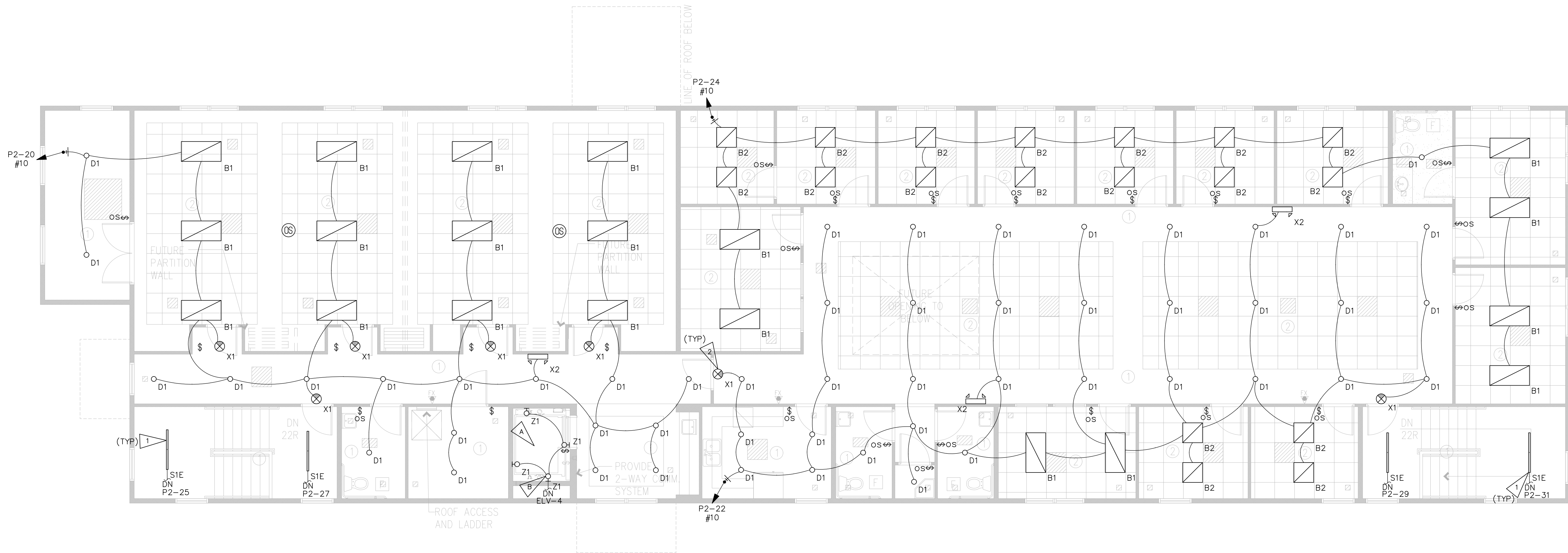
ROBISON ENGINEERING, INC.
 19401 40TH AVE W, SUITE 302
 LYNNWOOD, WA 98036
 PHONE: (206) 364-3343

DATE: 06/17/2024
 REI NO. 1145-008

SHEET TITLE:
 LIGHTING PLAN - LEVEL 1

SHEET NO.
E1.01

City of Tacoma
 Reviewed for Code Compliance

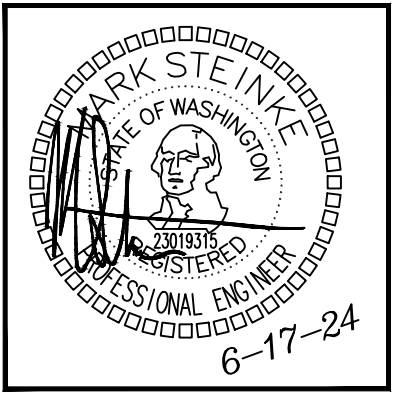


GENERAL NOTES	
1.	EMERGENCY EGRESS LIGHTING SHALL BE SUPPLIED BY EMERGENCY LUMINAIRES WITH 90 MINUTE BATTERY BACKUP.
2.	SEE SHEET E1.50 FOR LUMINAIRE SCHEDULE AND LIGHTING NOTES.
FLAG NOTES	
1.	CIRCUIT STAIRS VERTICALLY. LUMINAIRE(S) IN STAIRWELL SHALL HAVE INTEGRAL OCCUPANCY SENSOR WHICH REDUCES LIGHTING POWER OF FIXTURE(S) BY 50% WHEN SPACE IS VACANT FOR 15 MINUTES. (TYP)
2.	EXIT SIGNS: PROVIDE UNSWITCHED HOT.

SHEET NOTES	
A.	MOUNT PIT LIGHT SWITCH ADJACENT TO LADDER. USE ILLUMINATED HANDLE TYPE. DO NOT COMBINE CIRCUITS SERVING ELEVATOR, ELEVATOR PIT, OR ELEVATOR HOISTWAY WITH HOMERUNS FROM OTHER ROOMS/AREAS. (NEC 620.23-24).
B.	CIRCUIT ELEVATOR SHAFT VERTICALLY.

LIGHTING PLAN - LEVEL 2
SCALE: 3/16" = 1'-0"

NO.	DATE	DESCRIPTION	REVISIONS
1	06/17/24	PERMIT RESUBMITTAL	



JUR	JUR	KC	MS
DRAWN:	DESIGNED:	CHECKED:	APPROVED:

PROJECT: **ST CHARLES BORROMEO PARISH OFFICES ADDITION**
7112 S 12TH ST, TACOMA, WA 98466

19401 40TH AVE W, SUITE 302
LYNNWOOD, WA 98036
PHONE: (206)364-3343

ROBISON ENGINEERING, INC.

DATE: 06/17/2024
REI NO. 1145-008

SHEET TITLE:
LIGHTING PLAN - LEVEL 2

SHEET NO.
E1.02

Check Tacoma
Reviewed for Code Compliance

LIGHTING CONTROLS LEGEND	
	TOGGLE SWITCH FOR MANUAL ON/OFF LIGHTING CONTROL (WSEC C405.2.3). SUBSCRIPT INDICATES WHICH FIXTURES ARE TO BE CONTROLLED BY WHICH SWITCH. SUBSCRIPT 'k' INDICATES TAMPER RESISTANT KEYED SWITCH FOR USE BY AUTHORIZED PERSONNEL ONLY.
	DIMMER SWITCH FOR MANUAL MULTI-LEVEL LIGHTING CONTROL. SWITCH SHALL ALSO HAVE MANUAL ON/OFF FUNCTIONALITY. SUBSCRIPT INDICATES WHICH FIXTURES ARE TO BE CONTROLLED BY WHICH DIMMER. (C405.2.3)
	SWITCHES LABELED 'os' OR 'vs' SHALL TURN OFF ALL CONNECTED LUMINAIRES WITHIN 20 MINUTES OF SPACE BEING VACANT. (C405.2.1.1)
	WALLBOX DIMMER OR SWITCH FOR MANUAL LOCAL LIGHTING CONTROL (C405.2.3). WALLBOXES SHALL ALSO HAVE MANUAL ON/OFF FUNCTIONALITY OF ALL CONNECTED LUMINAIRES. SUBSCRIPT INDICATES WHICH FIXTURES ARE TO BE CONTROLLED BY ZONE ACCORDING TO LIGHTING CONTROL SCHEDULE; 'x' INDICATES MULTIPLE ZONE CONTROL. SUBSCRIPT 'TR' INDICATES TAMPER RESISTANT CONTROLS TO BE ACCESSED BY AUTHORIZED PERSONNEL ONLY.
	CONTROL STATION FOR MANUAL LOCAL LIGHTING CONTROL (C405.2.3). WALLBOXES SHALL HAVE MANUAL ON/OFF AND DIMMING FUNCTIONALITY OF ALL CONNECTED LUMINAIRES. SUBSCRIPT CORRESPONDS TO 'LIGHTING CONTROLS' TABLE.
	OCCUPANCY SENSOR SHALL AUTOMATICALLY TURN OFF ALL CONNECTED LUMINAIRES WITHIN 20 MINUTES OF SPACE BEING VACANT. (C404.2.1.1)
	MULTIZONE PHOTOSENSOR FOR DAYLIGHT ZONE CONTROL SHALL AUTOMATICALLY ADJUST THE LIGHT OUTPUT OF ALL CONNECTED LUMINAIRES BASED ON THE DAYLIGHT LEVEL IN THE PRIMARY AND SECONDARY ZONES (C405.2.4). SUBSCRIPT INDICATES WHICH FIXTURES ARE TO BE CONTROLLED BY ZONE ACCORDING TO LIGHTING CONTROL SCHEDULE; 'x' INDICATES MULTIPLE ZONE CONTROL.

GENERAL LIGHTING NOTES	
1.	LIGHTING CONTROLS SHALL BE INSTALLED WHICH MEET ALL REQUIREMENTS OF LOCAL ENERGY CODES.
2.	EMERGENCY LIGHT FIXTURES: IN ADDITION TO SWITCH-LEG, PROVIDE UNSWITCHED HOT TO SERVE INTERNAL BATTERY AND CHARGER.
3.	LOCATIONS OF OCCUPANCY SENSORS, PHOTO SENSORS, DIMMERS, AND SWITCHES ARE DIAGRAMMATIC. CONTRACTOR TO COORDINATE QUANTITIES AND OPTIMAL LOCATIONS WITH LIGHTING CONTROL MANUFACTURER AND ARCH/OWNER.
4.	AUTOMATIC LIGHTING SHUT-OFF CONTROLS SHALL BE PROVIDED BY LOCAL OCCUPANCY SENSORS UNLESS OTHERWISE NOTED. PUBLIC SPACES ARE ACTIVE 24/7 AND THEREFORE EXEMPT FROM AUTOMATIC LIGHTING SHUT-OFF REQUIREMENTS FOR SECURITY. (WSEC C405.2)
5.	DAYLIGHT ZONES ARE SHOWN ON PLANS AS DEFINED BY WASHINGTON STATE ENERGY CODE (WSEC) C405.2.4.2. SIDELIGHT DAYLIGHT ZONES ARE REFERRED TO AS 'PRIMARY' AND 'SECONDARY' ON PLANS AND DENOTED BY DASHED LINES.
6.	FOR CUSTOM FF&E FIXTURES, IT IS THE MANUFACTURER'S RESPONSIBILITY TO FURNISH PRODUCTS WHICH ARE COMPLIANT WITH ALL REQUIREMENTS OF LOCAL ENERGY CODES, AS WELL AS MATCH THE ELECTRICAL SPECIFICATIONS PROVIDED IN THE LUMINAIRE SCHEDULES. PROVIDE SUBMITTAL SHOP DRAWINGS WITHIN 30 DAYS OF RECEIVING FIXTURE ORDER. SUBMITTALS SHALL CLEARLY INDICATE LAMPING AND MAXIMUM WATTAGE RATING OF LAMP SOCKETS. NON-COMPLIANT FIXTURES REJECTED BY ELECTRICAL INSPECTOR SHALL BE RETURNED TO THE MANUFACTURER FOR REWORKING AND/OR RE-LABELING.
7.	ALL FIXTURES SHALL BE INSTALLED ACCORDING TO THE MANUFACTURER'S INSTRUCTIONS.
8.	CONTRACTOR SHALL BE RESPONSIBLE TO ORDER ALL NECESSARY HARDWARE, ELECTRICAL CABLE, TIMERS, TRANSFORMERS, ETC., AS REQUIRED FOR COMPLETION OF INSTALLATION OF A FULLY FUNCTIONING SYSTEM.
9.	CONTRACTOR SHALL BE RESPONSIBLE FOR EQUIPPING ALL FIXTURES WITH THE EXACT LAMPS SPECIFIED IN THE FIXTURE SCHEDULE.
10.	WHERE FIXTURES REQUIRE REMOTE TRANSFORMERS OR BALLASTS, THE CONTRACTOR SHALL DETERMINE LOCATIONS AS REQUIRED FOR EVEN LOAD DISTRIBUTION, SERVICE ACCESS, AND VENTILATION.
11.	THE CONTRACTOR SHALL COORDINATE WITH THE ELECTRICAL ENGINEER FOR EXACT LOCATIONS OF TIMERS AND/OR PHOTO CELLS, IF ANY.
12.	WHERE APPLICABLE, THE CONTRACTOR SHALL AIM AND ADJUST LIGHTING FIXTURES AS DIRECTED BY THE LIGHTING DESIGNER UPON COMPLETION OF THE INSTALLATION.
SPECIAL NOTE TO THE CONTRACTOR:	
1.	FIXTURE SUBMITTALS THAT DO NOT INCLUDE LAMP SPECIFICATIONS WILL BE CONSIDERED INCOMPLETE AND WILL NOT BE REVIEWED.

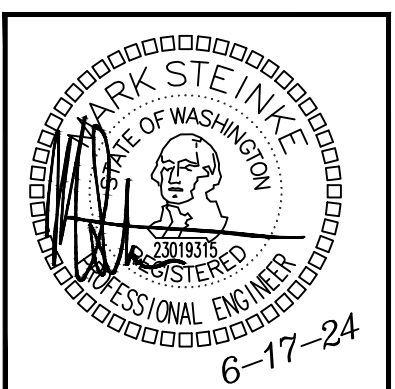
A GENERAL LUMINAIRE SCHEDULE									
CALLOUT	SYMBOL	MOUNTING	DESCRIPTION	MODEL	VOLTAGE	TYPE	CRI / CCT	LAMPING	WATTAGE
A2E		SURFACE	EXTERIOR WALL SCONCE - INTEGRAL PHOTOCONTROL - EMERGENCY BATTERY BACKUP	GARDCO: 121-16L-200-WW-G4-2-EBPC-UNV-PCB	120	0-10V DIMMING	80 / 3000K	(1) 12W LED	12
B1		RECESSED	2X4 TROFFER	METALUX: 24GR LD5 48 F1 UNV L835 CD1 U	120	0-10V DIMMING	80 / 3500K	(1) 38W LED	38
B2		RECESSED	2X2 TROFFER	METALUX: 22GR LD5 32 F1 UNV L835 CD1 U	120	0-10V DIMMING	80 / 3500K	(1) 30W LED	30
B3		SURFACE	4' NARROW WRAP - BOH	SIGNIFY - DAY-BRITE: FSW 4 40L 830 UNV	120	0-10V DIMMING	80 / 3000K	(1) 31W LED	31
B3E		SURFACE	4' NARROW WRAP - BOH - EMERGENCY BATTERY BACKUP	SIGNIFY - DAY-BRITE: FSW 4 40L 830 UNV EMLD	120	0-10V DIMMING	80 / 3000K	(1) 31W LED	31
D1		CEILING	4" DOWNLIGHT	WAC: R4FRDT-930-[FINISH]	120	0-10V DIMMING		(1) 13W LED 3000K	13
D2		CEILING	4.5" WALLWASH	WAC: R4RWT-AB30-907-[FINISH]	120	0-10V DIMMING		(1) 15W LED 3000K	15
S1E		SURFACE	4' STAIRWELL / SERVICE CORRIDOR STRIP - INTEGRAL OCCUPANCY SENSOR - EMERGENCY BATTERY BACKUP	HE WILLIAMS: SLF 4 L26 830 HIA EM/10W (L37) OCCWS FSP-L2-120 SD50-120	120	BI-LEVEL MOTION	80 / 3000K	(1) 20W LED	20
X1		SURFACE	EXIT SIGN - SINGLE FACE - CIRCUIT TO NEAREST LIGHTING CIRCUIT	SURELITES: CX61 (OR EQUAL) WITH BATTERY BACKUP	MULTIPLE	EM	EM	(1) 5W LED	5
X2		SURFACE	EMERGENCY LIGHT - EMERGENCY BATTERY BACKUP	LITHONIA: ELM2LF SERIES (OR EQUAL)	MULTIPLE	EM	NA / NA	(1) 5W EM	5
Z1		SURFACE	ELEVATOR PIT/OVERHEAD MACHINE JELLY JAR	SPECTRUM LIGHTING: WJTG27L35KDS10XFJ1 WLKA	120	0-10V DIMMING	80 / 3500K	(1) 18W LED	18

- NOTES:
- CONTRACTOR TO FURNISH AND INSTALL ALL FIXTURES.
 - LUMINAIRE SCHEDULE IS BOD ONLY. CONTRACTOR TO SUBMIT FIXTURE MODEL OR EQUIVALENT. CONTRACTOR TO COORDINATE FIXTURE FINISHES WITH ARCHITECT/OWNER.
 - FIXTURE CATALOG NUMBERS DO NOT NECESSARILY DENOTE SPECIFIC MOUNTING ACCESSORIES. CONTRACTOR TO PROVIDE ALL NECESSARY ACCESSORIES TO SUCCESSFULLY COMPLETE THE INSTALLATION.

LIGHTING CONTROL SYSTEM REQUIREMENTS	
1.	CONTRACTOR TO PROVIDE A FULLY OPERATIONAL LIGHTING CONTROL SYSTEM.
2.	CONTRACTOR SHALL VERIFY THE COMPATIBILITY OF DIMMING AND CONTROL MODULES WITH FIXTURE TYPES PRIOR TO INSTALLATION.
3.	ELECTRICAL CONTRACTOR SHALL COORDINATE WITH A LIGHTING CONTROLS VENDOR TO OBTAIN LIGHTING CONTROL SYSTEM PACKAGE COMPLETE WITH DEVICES, WIRING DIAGRAMS, ANNOTATED PLANS INDICATING WHICH DEVICE TO BE USED IN EACH LOCATION, CONNECTION REQUIREMENTS, SET UP INSTRUCTIONS, COMMISSIONING AND CHECK-OUT FOLLOWING COMPLETION. PROVIDE ALL LOW VOLTAGE WIRING AS REQUIRED FOR CONTROL DEVICE INTERCONNECTIONS.
4.	INSTALLER QUALIFICATIONS: TECHNICIAN INSTALLING AND WIRING THE LIGHTING CONTROL SYSTEM SHALL HAVE INSTALLED THIS SAME SYSTEM AT LEAST ONCE PREVIOUSLY. TECHNICIAN SHALL HAVE RECEIVED TRAINING BY FACTORY REPRESENTATIVE ON THE SYSTEM BEING INSTALLED.
5.	PROVIDE LIGHTING CONTROL SYSTEM TO PERFORM THE FUNCTIONS DESCRIBED BELOW:
5.1.	LIGHTING CONTROL SCHEDULE: PROVIDE SEPARATE SWITCHING AND DIMMING CONTROL FOR LIGHTING ZONES AS INDICATED.
5.2.	AUTOMATIC LIGHTING CONTROLS:
5.2.1.	UNLESS OTHERWISE NOTED ON PLANS, OCCUPANCY SENSORS SHALL AUTOMATICALLY TURN OFF ALL CONNECTED LIGHTING WITHIN 20 MINUTES OF SPACE BEING UNOCCUPIED. OCCUPANCY SENSORS SHALL EITHER BE MANUAL ON OR SHALL BE CONTROLLED TO AUTOMATICALLY TURN THE LIGHTING ON TO NOT MORE THAN 50 PERCENT POWER EXCEPT WHERE MANUAL ON WOULD ENDANGER THE SAFETY OR SECURITY OF THE ROOM OR BUILDING OCCUPANTS. (C405.2.1.1)
5.2.2.	MULTI-ZONE PHOTO-SENSORS SHALL PROVIDE SEPARATE CONTROL FOR LUMINAIRES IN EACH TYPE OF DAYLIGHT ZONE. (C405.2.4.1)
5.2.3.	EXTERIOR LIGHTING CONTROLS SHALL AUTOMATICALLY TURN OFF ALL EXTERIOR LIGHTING AS A FUNCTION OF AVAILABLE DAYLIGHT, BUILDING FACADE AND LANDSCAPE LIGHTING SHALL HAVE CONTROLS THAT AUTOMATICALLY SHUT OFF THE LIGHTING FOR A MINIMUM OF 6 HOURS PER NIGHT OR NOT LATER THAN ONE HOUR AFTER BUSINESS CLOSING TO NOT EARLIER THAN ONE HOUR BEFORE BUSINESS OPENING, WHICHEVER IS LESS. OTHER LIGHTING SHALL HAVE CONTROLS CONFIGURED TO AUTOMATICALLY REDUCE THE CONNECTED LIGHTING POWER BY AT LEAST 30 PERCENT FROM NO LATER THAN 12 MIDNIGHT TO 6 AM OR FROM ON HOUR AFTER BUSINESS CLOSING TO ONE HOUR BEFORE BUSINESS OPENING OR DURING ANY PERIOD WHEN NO ACTIVITY HAS BEEN DETECTED FOR A TIME OF NO LONGER THAN 15 MINUTES. (C405.2.6)
6.	MEANS OF EGRESS ILLUMINATION: AT ANY TIME THE BUILDING IS OCCUPIED, THE MEANS OF EGRESS SHALL BE ILLUMINATED AT AN INTENSITY OF NOT LESS THAN 1 FOOTCANDLE AT FLOOR LEVEL. (IBC 1008.2.1)
7.	DURING EMERGENCY CONDITIONS EMERGENCY LIGHTING CIRCUITS SHALL BYPASS ALL LIGHTING CONTROLS IN ORDER TO ENERGIZE ALL CONNECTED LUMINAIRES AT FULL CAPACITY. PROVIDE UL924 RELAYS AS REQUIRED TO BYPASS AREA CONTROLS.
7.1.	EMERGENCY PATHWAY EGRESS LIGHTING: ILLUMINATION PROVIDED ALONG THE EGRESS PATH AT FLOOR LEVEL SHALL AVERAGE AT LEAST 1 FOOT CANDLE. (IBC 1008.3.5)
7.2.	EMERGENCY LIGHTING SHALL BE SUPPLIED BY: INVERTER OR BATTERY BACK-UP FIXTURES.

EXIT SIGN NOTES	
DURING CONSTRUCTION UPON COMPLETION OF A TYPICAL FLOOR FRAMING AND BEFORE WALL COVER, ELECTRICAL CONTRACTOR SHALL WALK THE EGRESS PATHS WITH THE LOCAL INSPECTOR (AHJ) TO CONFIRM THAT ALL THE EXIT SIGNS ARE LOCATED PER THE AHJ'S SATISFACTION AND IDENTIFY ANY ADDITIONAL EXIT SIGNS THAT THE AHJ WISHES TO BE INSTALLED (IBC 1013.1). CONTRACTOR SHALL PROVIDE UP TO 10% ADDITIONAL EXIT SIGNS AT NO ADDITIONAL COST.	

NO.	DATE	DESCRIPTION	REVISIONS
1	06/17/24	PERMIT RESUBMITTAL	



JUR	JUR	KC	MS
DRAWN:	DESIGNED:	CHECKED:	APPROVED:

PROJECT: ST CHARLES BORRAMEO PARISH OFFICES ADDITION
 7112 S 12TH ST, TACOMA, WA 98466

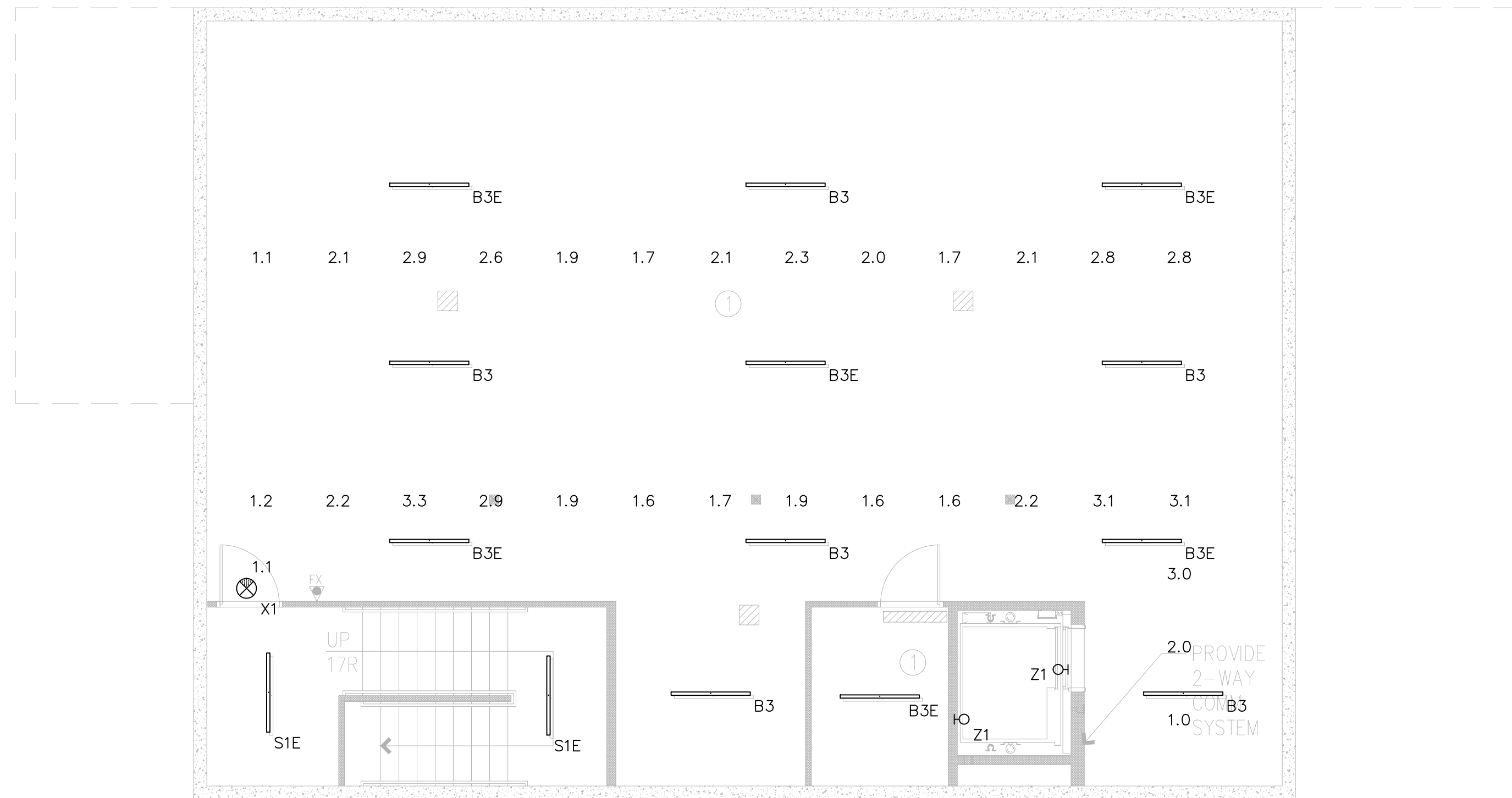
ROBISON ENGINEERING, INC.
 19401 40TH AVE W, SUITE 302
 LYNNWOOD, WA 98036
 PHONE: 206/364-3343

DATE: 06/17/2024
REI NO. 1145-008

SHEET TITLE:
LIGHTING NOTES AND LUMINAIRE SCHEDULE

SHEET NO.
E1.50

Reviewed for Code Compliance



Egress Photometric Schedule

AVERAGE FOOT-CANDLES	2.12
MAXIMUM FOOT-CANDLES	3.3
MINIMUM FOOT-CANDLES	1.0
MINIMUM TO MAXIMUM FC RATIO	0.31
MAXIMUM TO MINIMUM FC RATIO	3.19
AVERAGE TO MINIMUM FC RATIO	2.07

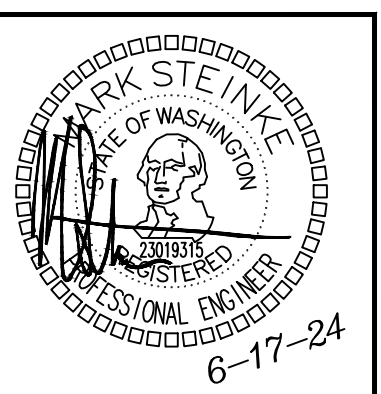
PHOTOMETRIC NOTES

1. PHOTOMETRIC CALCULATIONS BASE ON AVAILABLE IES FILES FROM FIXTURE MANUFACTURER (OR EQUIVALENT). FIXTURE SUBSTITUTIONS MAY COMPROMISE FOOT CANDLE (FC) LEVELS.
2. PHOTOMETRIC CALCULATION ELEVATION FROM CEILING HEIGHT UON IN LUMINAIRE SCHEDULE ON SHEET E1.50.
3. EMERGENCY EGRESS SHOWN, PHOTOMETRIC CALCULATIONS BASED ON EMERGENCY LIGHTING ONLY. CALCULATION ELEVATION AFF.

EGRESS PHOTOMETRIC PLAN PLAN – BASEMENT

SCALE: 3/16" = 1'-0"

NO.	DATE	DESCRIPTION	REVISIONS
1	06/17/24	PERMIT RESUBMITTAL	



JUR	JUR	KC	MS
DRAWN:	DESIGNED:	CHECKED:	APPROVED:

PROJECT: **ST CHARLES BORROMEO PARISH OFFICES ADDITION**
7112 S 12TH ST, TACOMA, WA 98466

19401 40TH AVE W. SUITE 302
LYNNWOOD, WA 98036
PHONE: (206)364-3343

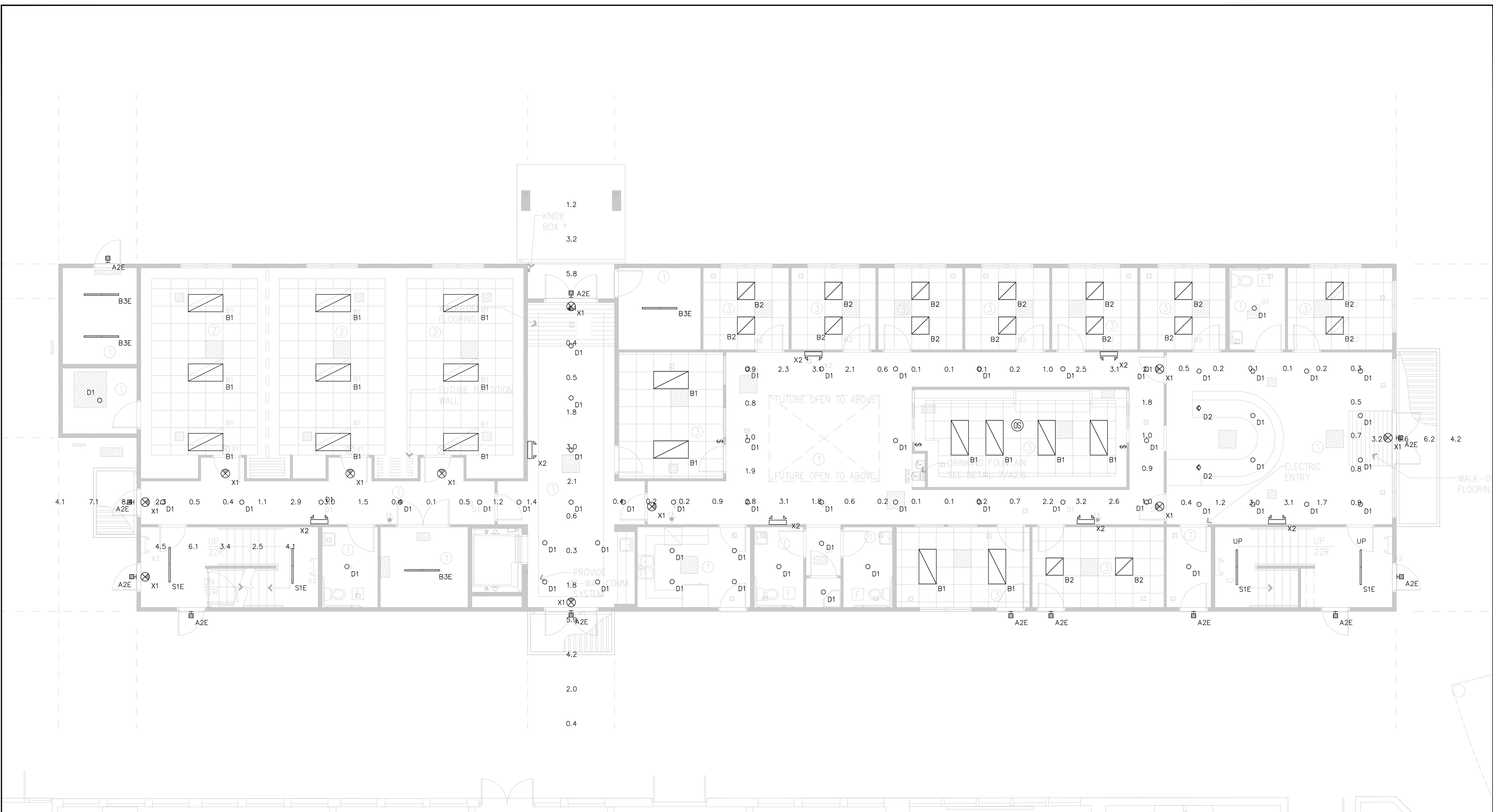
ROBISON ENGINEERING, INC.

DATE: 06/17/2024
REI NO. 1145-008

SHEET TITLE:
EGRESS PHOTOMETRIC PLAN - BASEMENT

SHEET NO.
E1.60

Reviewed for Code Compliance



PHOTOMETRIC NOTES

- PHOTOMETRIC CALCULATIONS BASE ON AVAILABLE IES FILES FROM FIXTURE MANUFACTURER (OR EQUIVALENT). FIXTURE SUBSTITUTIONS MAY COMPROMISE FOOT CANDLE (FC) LEVELS.
- PHOTOMETRIC CALCULATION ELEVATION FROM CEILING HEIGHT UON IN LUMINAIRE SCHEDULE ON SHEET E1.50.
- EMERGENCY EGRESS SHOWN, PHOTOMETRIC CALCULATIONS BASED ON EMERGENCY LIGHTING ONLY. CALCULATION ELEVATION AFF.

Egress Photometric Schedule

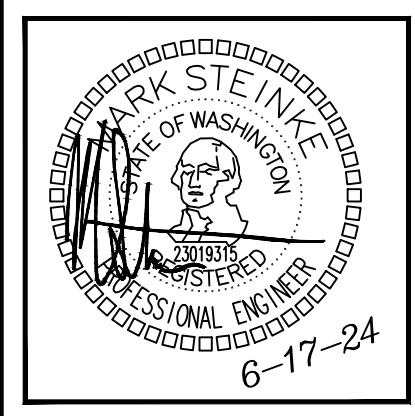
AVERAGE FOOT-CANDLES	1.77
MAXIMUM FOOT-CANDLES	8.4
MINIMUM FOOT-CANDLES	0.1
MINIMUM TO MAXIMUM FC RATIO	0.01
MAXIMUM TO MINIMUM FC RATIO	116.79
AVERAGE TO MINIMUM FC RATIO	24.68

**STAIRWELL Egress Photometric Schedule*

AVERAGE FOOT-CANDLES	4.12
MAXIMUM FOOT-CANDLES	6.1
MINIMUM FOOT-CANDLES	2.5
MINIMUM TO MAXIMUM FC RATIO	0.41
MAXIMUM TO MINIMUM FC RATIO	2.45
AVERAGE TO MINIMUM FC RATIO	1.65

EGRESS PHOTOMETRIC PLAN - LEVEL 1
SCALE: 3/16" = 1'-0"

NO.	DATE	DESCRIPTION	REVISIONS
1	06/17/24	PERMIT RESUBMITTAL	



JUR	JUR	KC	MS
DRAWN:	DESIGNED:	CHECKED:	APPROVED:

PROJECT: ST CHARLES BORROMEO PARISH OFFICES ADDITION
7112 S 12TH ST, TACOMA, WA 98466

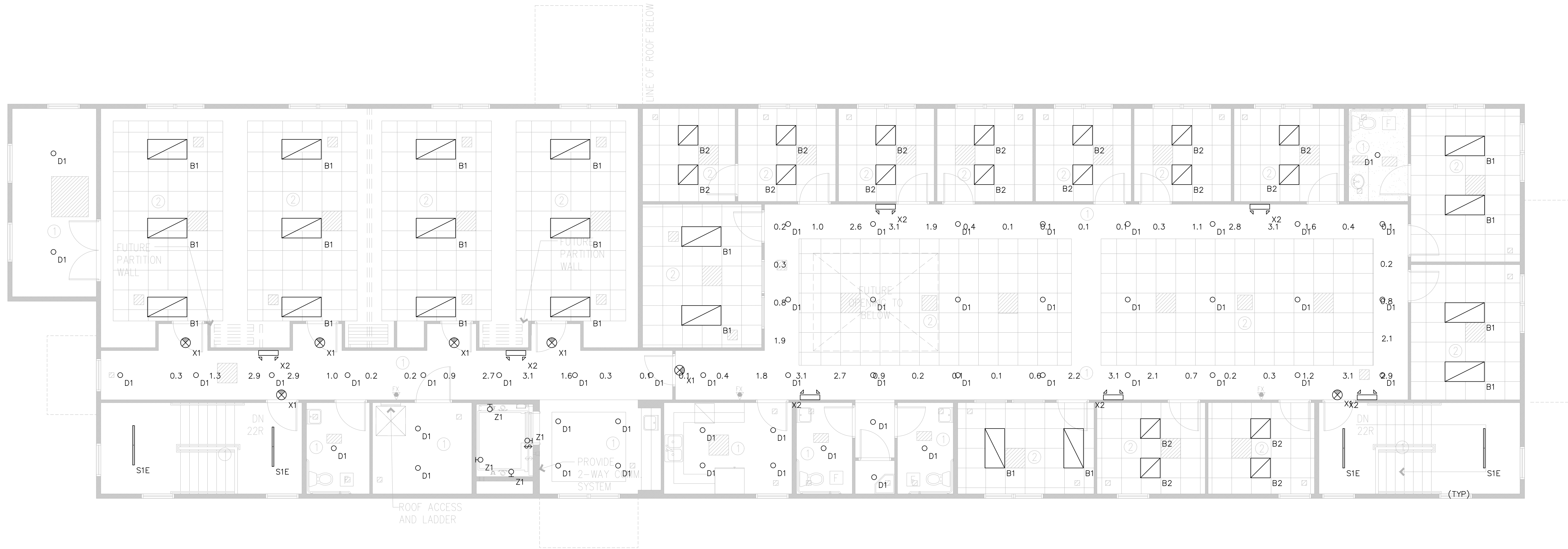
ROBISON ENGINEERING, INC.
19401 40TH AVE W, SUITE 302
LYNNWOOD, WA 98036
PHONE: (206)364-3343

DATE: 06/17/2024
REV. NO. 1145-008

SHEET TITLE:
EGRESS PHOTOMETRIC PLAN - LEVEL 1

SHEET NO.
E1.61

Reviewed for Code Compliance



PHOTOMETRIC NOTES

- PHOTOMETRIC CALCULATIONS BASE ON AVAILABLE IES FILES FROM FIXTURE MANUFACTURER (OR EQUIVALENT). FIXTURE SUBSTITUTIONS MAY COMPROMISE FOOT CANDLE (FC) LEVELS.
- PHOTOMETRIC CALCULATION ELEVATION FROM CEILING HEIGHT UON IN LUMINAIRE SCHEDULE ON SHEET E1.50.
- EMERGENCY EGRESS SHOWN, PHOTOMETRIC CALCULATIONS BASED ON EMERGENCY LIGHTING ONLY. CALCULATION ELEVATION AFF.

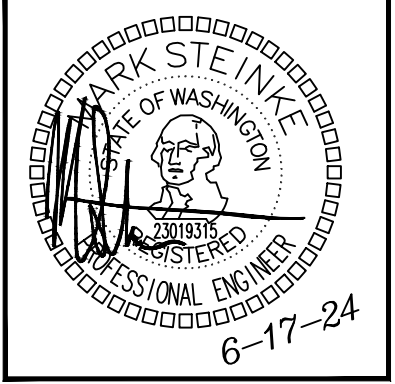
Egress Photometric Schedule

AVERAGE FOOT-CANDLES	1.24
MAXIMUM FOOT-CANDLES	3.1
MINIMUM FOOT-CANDLES	0.1
MINIMUM TO MAXIMUM FC RATIO	0.02
MAXIMUM TO MINIMUM FC RATIO	49.25
AVERAGE TO MINIMUM FC RATIO	19.85

EGRESS PHOTOMETRIC PLAN - LEVEL 2

SCALE: 3/16" = 1'-0"

NO.	DATE	DESCRIPTION	REVISIONS
1	06/17/24	PERMIT RESUBMITTAL	



JUR	JUR	KC	MS
DRAWN:	DESIGNED:	CHECKED:	APPROVED:

PROJECT: ST CHARLES BORMEIO PARISH OFFICES ADDITION
7112 S 12TH ST, TACOMA, WA 98466

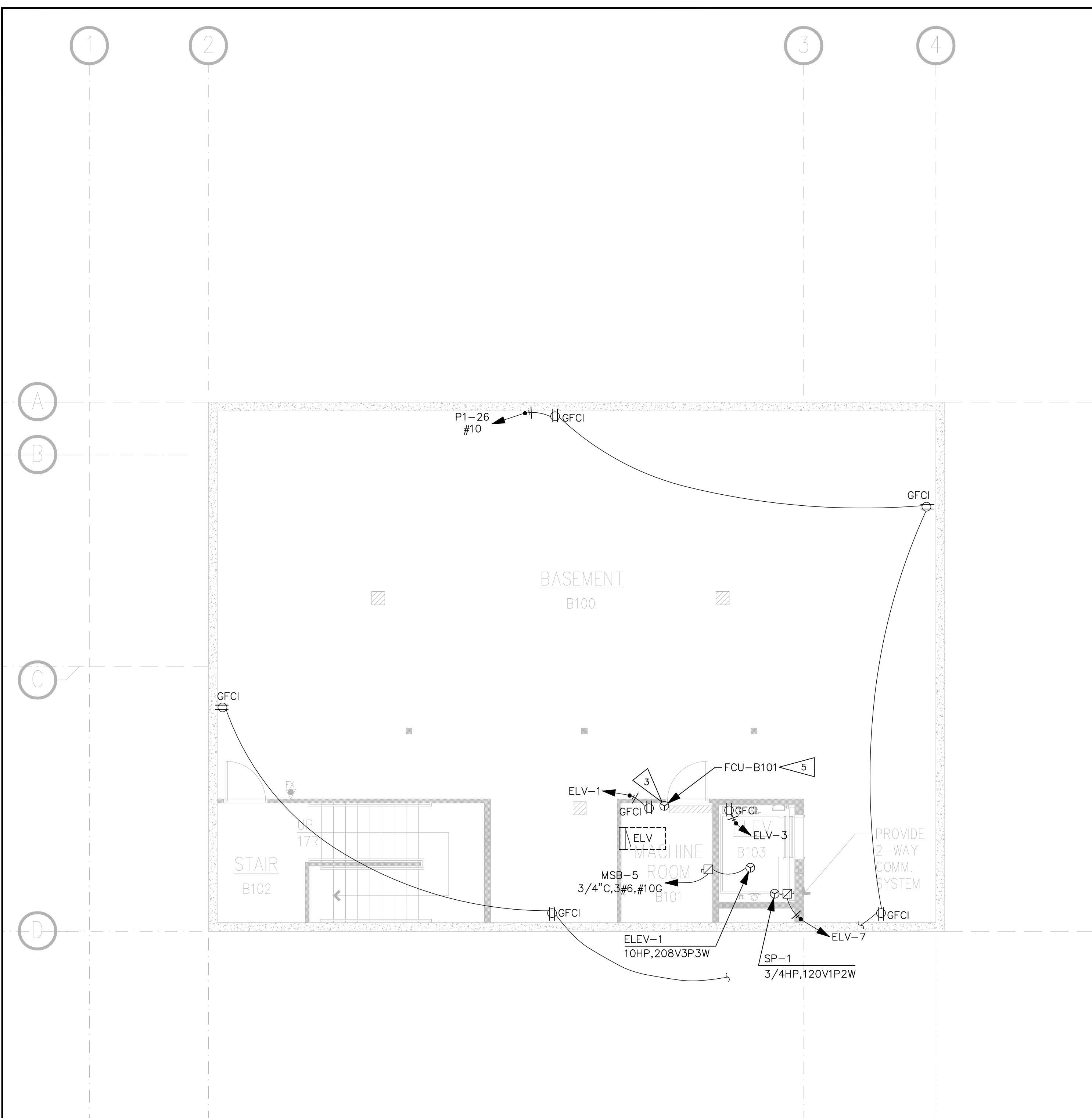
ROBISON ENGINEERING, INC
19401 40TH AVE W, SUITE 302
LYNNWOOD, WA 98036
PHONE: (206)364-3343

DATE: 06/17/2024
REI NO. 1145-008

SHEET TITLE:
EGRESS PHOTOMETRIC PLAN - LEVEL 2

SHEET NO.
E1.62

Check for Code Compliance
Reviewed for Code Compliance



GENERAL NOTES

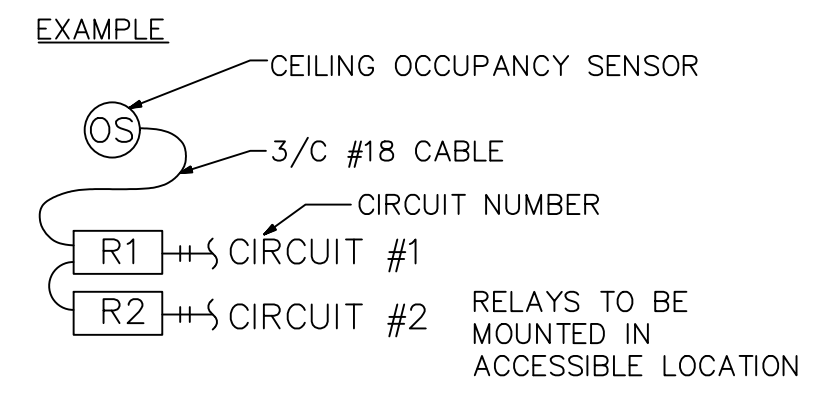
- ELECTRICAL CIRCUITING IS DIAGRAMMATIC. FINAL MEANS AND METHODS ARE TO BE DETERMINED IN FIELD. CONTRACTOR IS RESPONSIBLE FOR LOAD BALANCING AND ENSURING FIELD CIRCUITING CHANGES DO NOT RESULT IN OVERLOADING OF CIRCUITS.
- OCCUPANCY SENSOR LOCATIONS ARE NOTED ON E1.00 SERIES, LIGHTING SHEETS. FINAL DEVICE LOCATIONS AND QUANTITIES ARE TO BE DETERMINED BY CONTROLS CONTRACTOR FOR FULLY FUNCTIONAL SYSTEM.
- REFER TO LOW VOLTAGE DRAWINGS FOR LOW VOLTAGE EQUIPMENT LAYOUT DETAILS AND POWER REQUIREMENTS. TYPICAL FOR ALL IDF/MDF ROOMS.
- ELECTRICAL CONTRACTOR SHALL PROVIDE DEDICATED CLEAR SPACE, 6' OR TO STRUCTURAL CEILING, WHICHEVER IS LESS, ABOVE ALL ELECTRICAL EQUIPMENT.
- MAINTAIN REQUIRED WORK SPACE ADEQUATE ILLUMINATION, ACCESS TO WORK SPACE AND HEAD ROOM ABOUT ELECTRICAL EQUIPMENT.
- ALL EXTERIOR WIRING TO BE WATERTIGHT AND PERMANENTLY SUPPORTED WITH SUPPORTS UL LISTED FOR SUCH USAGE. SEAL ALL CONNECTIONS, BOXES, ETC. ALL EQUIPMENT, DEVICES, SUPPORTS, PARTS, ETC INSTALLED ON THE EXTERIOR SHALL BE EXTERIOR-RATED. DURING COSTRUCTION ALL CONDUIT, BOXES, ETC SHALL BE PROTECTED FROM WATER INFILTRATION.
- ELECTRICAL CONTRACTOR SHALL BE RESPONSIBLE FOR COORDINATING ANY BUCKOUTS NOT SHOWN OR SLEEVE LOCATIONS FOR INDIVIDUAL RISER CONDUITS WITH THE STRUCTURAL ENGINEER.
- RECEPTACLE LOCATIONS IN THE FRONT OF HOUSE AREA TO BE COORDINATED WITH ARCHITECT AND/OR INTERIORS.
- REFER TO ARCHITECTURAL DRAWINGS FOR SLAB TO SLAB WALL LOCATIONS. CONTRACTOR SHALL PROVIDE PENETRATIONS AS REQUIRED AND FIREPROOFING INSULATION TO MAINTAIN RATING OF ANY FIRE-RATED WALLS AND FLOORS. ALL FLOOR PENETRATIONS SHALL BE FINISHED TO PROVIDE A SMOOTH SURFACE.
- PROVIDE CO DETECTORS/ALARMS AS REQUIRED BY SBC 420.5.

FLAG NOTES

- PROVIDE (2) 2" CONDUIT TO ROOF STUBBED UP FOR SOLAR SYSTEM TO ELECTRICAL ROOM. REFER TO PV PLANS FOR SOLAR SYSTEM DESIGN.
- PROVIDE STUB UP WHERE NECESSARY AND RECEPTACLE OUTLET ON ROOF. ROOFTOP RECEPTACLES SHALL BE WEATHERPROOF AND GFCI PROTECTED. SERVICE RECEPTACLE MUST BE WITHIN 25FT OF MECHANICAL EQUIPMENT. COORDINATE WITH MECHANICAL CONTRACTOR FOR FINAL MECHANICAL EQUIPMENT LOCATIONS.
- COORDINATE EXACT EQUIPMENT LOCATIONS WITH MECHANICAL CONTRACTOR PRIOR TO INSTALLATION.
- PROVIDE CONTROLLED RECEPTACLES AS REQUIRED BY WA STATE ENERGY CODE. PROVIDE MOTION SENSORS, RELAYS, OR OTHER AUTOMATIC MEANS TO AUTOMATICALLY TURN OFF THE LOWER OUTLET WHEN SPACE IS NOT OCCUPIED.
- INDOOR UNIT POWERED FROM OUTDOOR UNIT.
- CONTRACTOR TO ROUTE DATA FROM EXISTING SERVER ROOM OF EXISTING BUILDING.

WA ENERGY CODE - CONTROLLED RECEPTACLES:

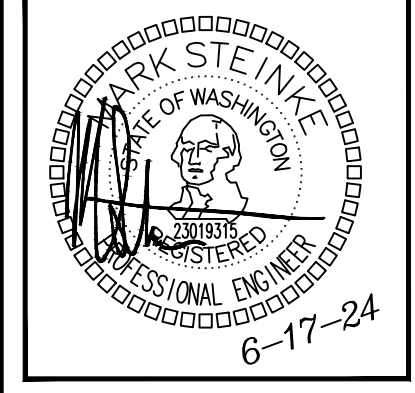
- PROVIDE CONTROLLED RECEPTACLES IN AREAS INDICATED PER WA ENERGY CODE C405.10.
- PROVIDE WATTSTOPPER DT-300 OR EQUIVALENT CEILING OCCUPANCY SENSOR AND BZ-200 CONTROL RELAYS IN ACCESSIBLE LOCATIONS.
- WHEN THE AREA IS OCCUPIED, THEN THE CONTROLLED RECEPTACLES SHALL BE ENERGIZED.
- SPLIT RECEPTACLES TO BE PROVIDED WITH CONTROLLED 120V HOT WIRED TO LOWER OUTLET AND CONTINUOUS 120V HOT WIRED TO UPPER OUTLET.



POWER PLAN - BASEMENT

SCALE: 3/16" = 1'-0"

NO.	DATE	DESCRIPTION	REVISIONS
1	06/17/24	PERMIT RESUBMITTAL	



JUR	JUR	KC	MS
DRAWN:	DESIGNED:	CHECKED:	APPROVED:

PROJECT: ST CHARLES BORROMEO PARISH OFFICES ADDITION
7112 S 12TH ST, TACOMA, WA 98466

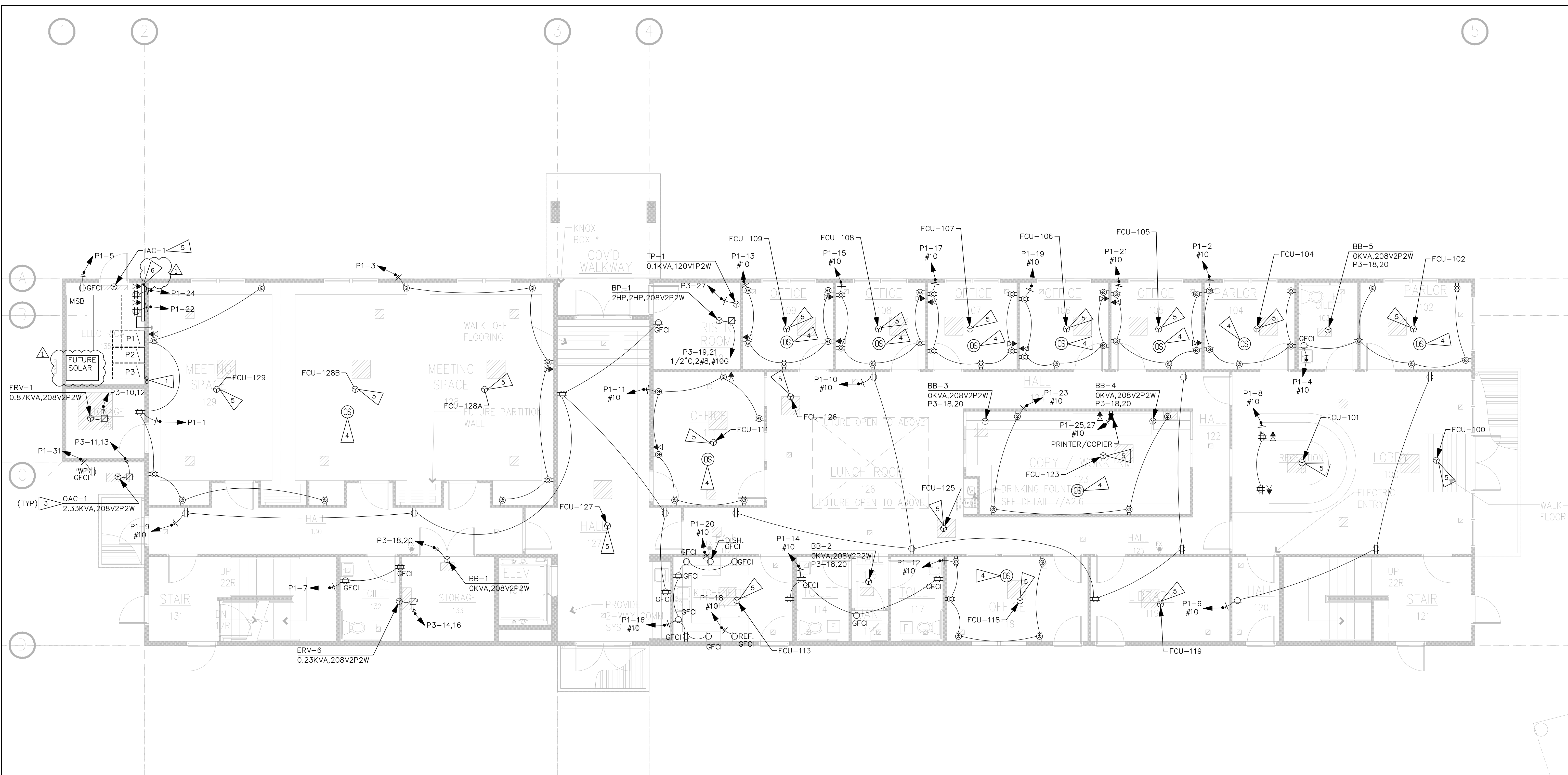
ROBISON ENGINEERING, INC.
19401 40TH AVE W, SUITE 302
LYNNWOOD, WA 98036
PHONE: 206/364-3343

DATE: 06/17/2024
REV. NO.: 1145-008

SHEET TITLE:
POWER PLAN - BASEMENT

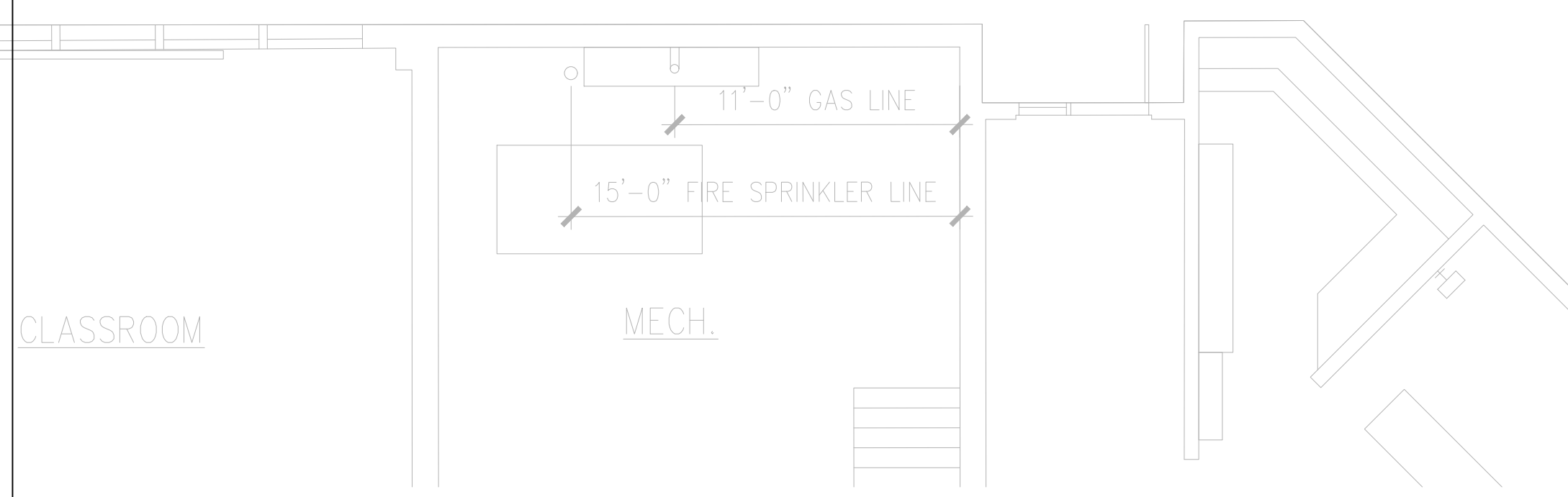
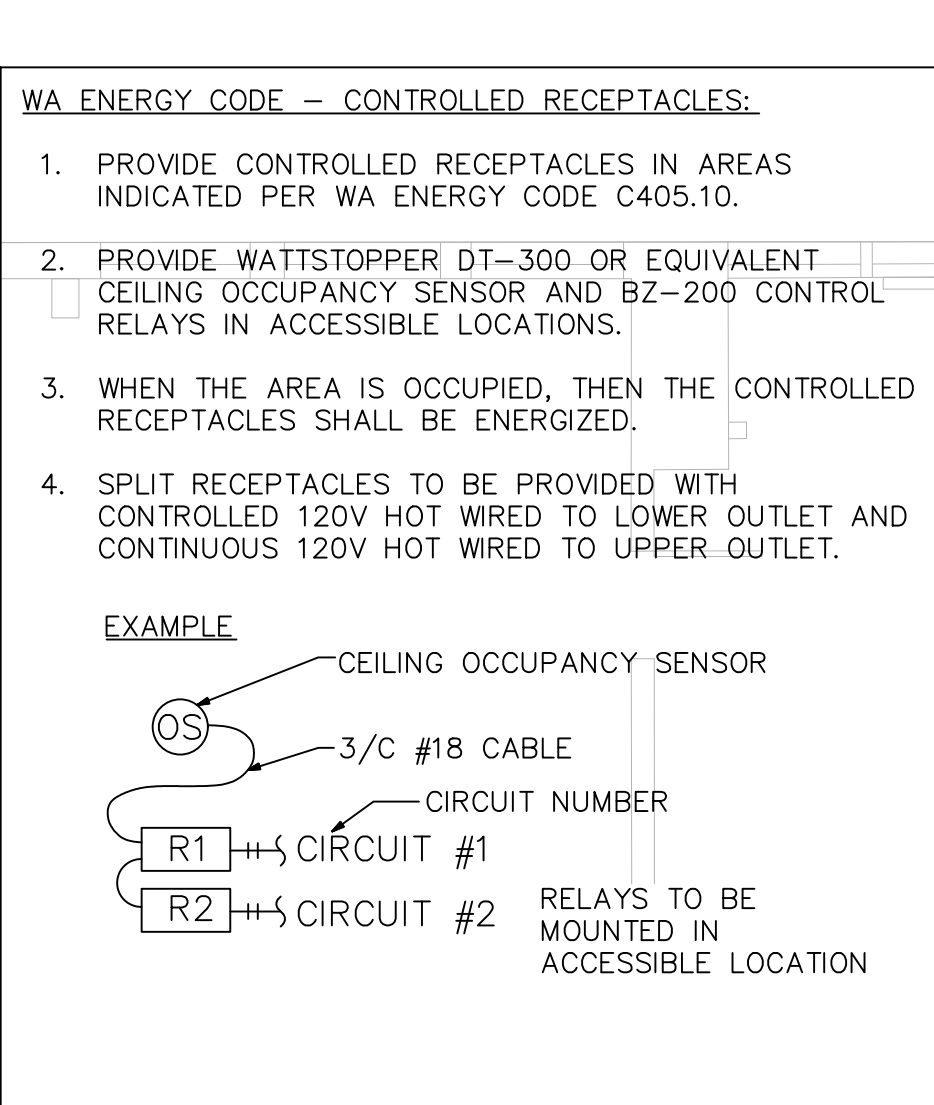
SHEET NO.
E2.00

Reviewed for Code Compliance



- GENERAL NOTES**
- ELECTRICAL CIRCUITING IS DIAGRAMMATIC. FINAL MEANS AND METHODS ARE TO BE DETERMINED IN FIELD. CONTRACTOR IS RESPONSIBLE FOR LOAD BALANCING AND ENSURING FIELD CIRCUITING CHANGES DO NOT RESULT IN OVERLOADING OF CIRCUITS.
 - OCCUPANCY SENSOR LOCATIONS ARE NOTED ON E1.00 SERIES, LIGHTING SHEETS. FINAL DEVICE LOCATIONS AND QUANTITIES ARE TO BE DETERMINED BY CONTROLS CONTRACTOR FOR FULLY FUNCTIONAL SYSTEM.
 - REFER TO LOW VOLTAGE DRAWINGS FOR LOW VOLTAGE EQUIPMENT LAYOUT DETAILS AND POWER REQUIREMENTS. TYPICAL FOR ALL IDF/MDF ROOMS.
 - ELECTRICAL CONTRACTOR SHALL PROVIDE DEDICATED CLEAR SPACE, 6' OR TO STRUCTURAL CEILING, WHICHEVER IS LESS, ABOVE ALL ELECTRICAL EQUIPMENT.
 - MAINTAIN REQUIRED WORK SPACE ADEQUATE ILLUMINATION, ACCESS TO WORK SPACE AND HEAD ROOM ABOUT ELECTRICAL EQUIPMENT.
 - ALL EXTERIOR WIRING TO BE WATERTIGHT AND PERMANENTLY SUPPORTED WITH SUPPORTS UL LISTED FOR SUCH USAGE. SEAL ALL CONNECTIONS, BOXES, ETC. ALL EQUIPMENT, DEVICES, SUPPORTS, PARTS, ETC INSTALLED ON THE EXTERIOR SHALL BE EXTERIOR-RATED. DURING COSTRUCTION ALL CONDUIT, BOXES, ETC SHALL BE PROTECTED FROM WATER INFILTRATION.
 - ELECTRICAL CONTRACTOR SHALL BE RESPONSIBLE FOR COORDINATING ANY BUCKOUTS NOT SHOWN OR SLEEVE LOCATIONS FOR INDIVIDUAL RISER CONDUITS WITH THE STRUCTURAL ENGINEER.
 - RECEPTACLE LOCATIONS IN THE FRONT OF HOUSE AREA TO BE COORDINATED WITH ARCHITECT AND/OR INTERIORS.
 - REFER TO ARCHITECTURAL DRAWINGS FOR SLAB TO SLAB WALL LOCATIONS. CONTRACTOR SHALL PROVIDE PENETRATIONS AS REQUIRED AND FIREPROOFING INSULATION TO MAINTAIN RATING OF ANY FIRE-RATED WALLS AND FLOORS. ALL FLOOR PENETRATIONS SHALL BE FINISHED TO PROVIDE A SMOOTH SURFACE.
 - PROVIDE CO DETECTORS/ALARMS AS REQUIRED BY SBC 420.5.

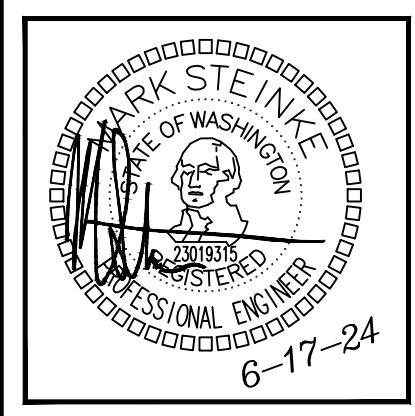
- FLAG NOTES**
- PROVIDE (2) 2" CONDUIT TO ROOF STUBBED UP FOR SOLAR SYSTEM TO ELECTRICAL ROOM. REFER TO PV PLANS FOR SOLAR SYSTEM DESIGN.
 - PROVIDE STUB UP WHERE NECESSARY AND RECEPTACLE OUTLET ON ROOF. ROOFTOP RECEPTACLES SHALL BE WEATHERPROOF AND GFCI PROTECTED. SERVICE RECEPTACLE MUST BE WITHIN 25FT OF MECHANICAL EQUIPMENT. COORDINATE WITH MECHANICAL CONTRACTOR FOR FINAL MECHANICAL EQUIPMENT LOCATIONS.
 - COORDINATE EXACT EQUIPMENT LOCATIONS WITH MECHANICAL CONTRACTOR PRIOR TO INSTALLATION.
 - PROVIDE CONTROLLED RECEPTACLES AS REQUIRED BY WA STATE ENERGY CODE. PROVIDE MOTION SENSORS, RELAYS, OR OTHER AUTOMATIC MEANS TO AUTOMATICALLY TURN OFF THE LOWER OUTLET WHEN SPACE IS NOT OCCUPIED.
 - INDOOR UNIT POWERED FROM OUTDOOR UNIT.
 - CONTRACTOR TO ROUTE DATA FROM EXISTING SERVER ROOM OF EXISTING BUILDING.



POWER PLAN - LEVEL 1
SCALE: 3/16" = 1'-0"

NO.	DATE	DESCRIPTION	REVISIONS
1	06/17/24	PERMIT RESUBMITTAL	

ROBISON ENGINEERING, INC.
19401 40TH AVE W, SUITE 302
LYNNWOOD, WA 98036
206-264-3343
CONTACT: JOSH REDD



JUR	JUR	KC	MS
DRAWN:	DESIGNED:	CHECKED:	APPROVED:

PROJECT: ST CHARLES BORMEIO PARISH OFFICES ADDITION
7112 S 12TH ST, TACOMA, WA 98466

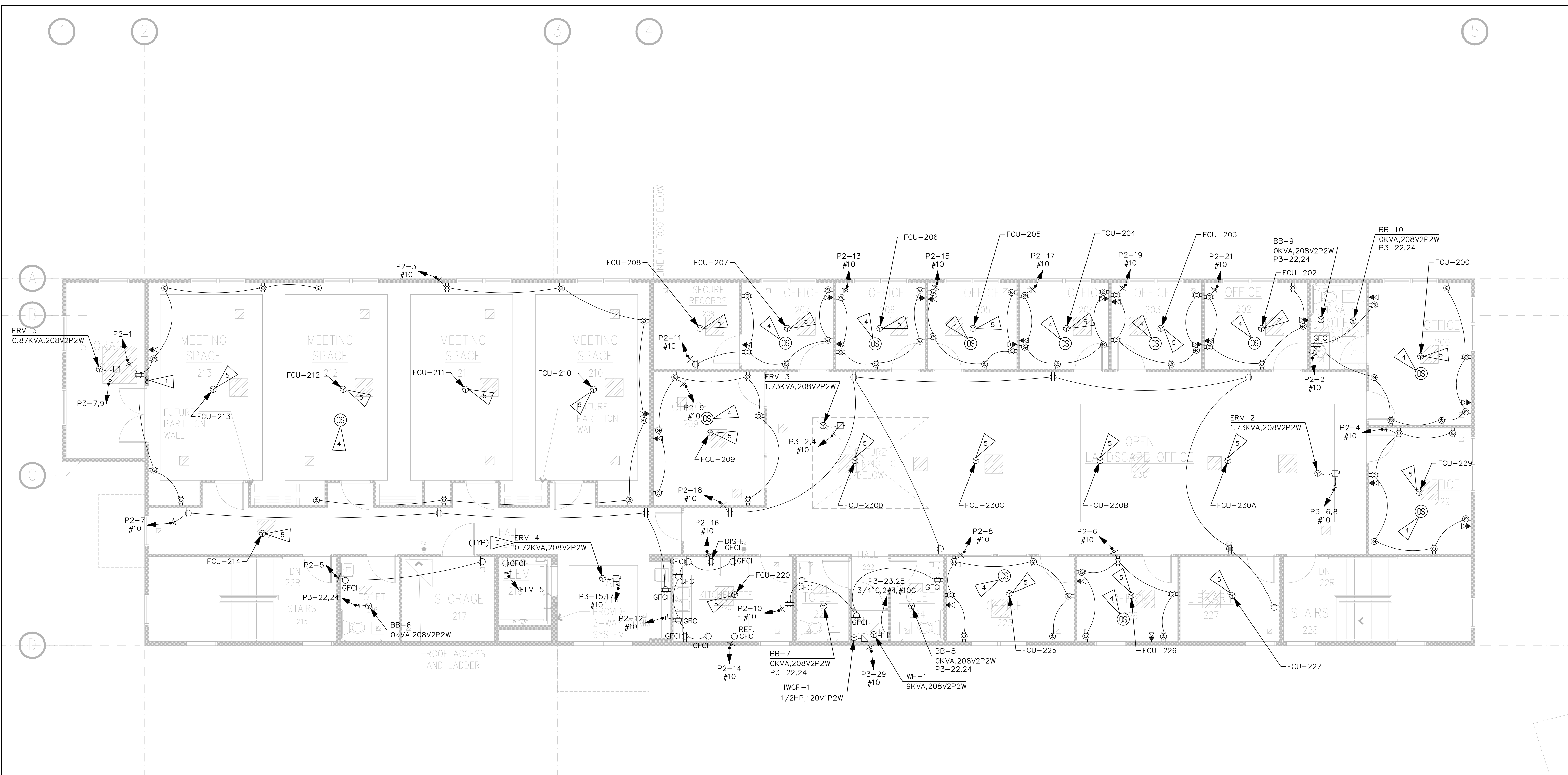
DATE: 06/17/2024
REL NO.: 1145-008

SHEET TITLE: POWER PLAN - LEVEL 1

SHEET NO.: E2.01

ROBISON ENGINEERING, INC.
19401 40TH AVE W, SUITE 302
LYNNWOOD, WA 98036
PHONE: (206) 364-3343

Reviewed for Code Compliance



GENERAL NOTES

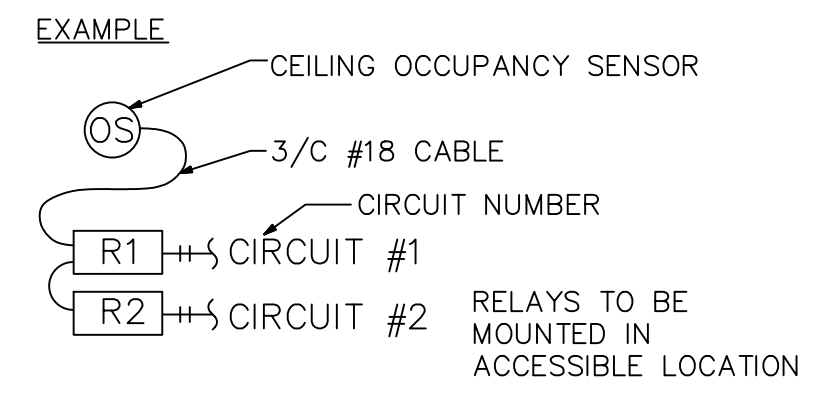
- ELECTRICAL CIRCUITING IS DIAGRAMMATIC. FINAL MEANS AND METHODS ARE TO BE DETERMINED IN FIELD. CONTRACTOR IS RESPONSIBLE FOR LOAD BALANCING AND ENSURING FIELD CIRCUITING CHANGES DO NOT RESULT IN OVERLOADING OF CIRCUITS.
- OCCUPANCY SENSOR LOCATIONS ARE NOTED ON E1.00 SERIES, LIGHTING SHEETS. FINAL DEVICE LOCATIONS AND QUANTITIES ARE TO BE DETERMINED BY CONTROLS CONTRACTOR FOR FULLY FUNCTIONAL SYSTEM.
- REFER TO LOW VOLTAGE DRAWINGS FOR LOW VOLTAGE EQUIPMENT LAYOUT DETAILS AND POWER REQUIREMENTS. TYPICAL FOR ALL IDF/MDF ROOMS.
- ELECTRICAL CONTRACTOR SHALL PROVIDE DEDICATED CLEAR SPACE, 6' OR TO STRUCTURAL CEILING, WHICHEVER IS LESS, ABOVE ALL ELECTRICAL EQUIPMENT.
- MAINTAIN REQUIRED WORK SPACE ADEQUATE ILLUMINATION, ACCESS TO WORK SPACE AND HEAD ROOM ABOUT ELECTRICAL EQUIPMENT.
- ALL EXTERIOR WIRING TO BE WATERTIGHT AND PERMANENTLY SUPPORTED WITH SUPPORTS UL LISTED FOR SUCH USAGE. SEAL ALL CONNECTIONS, BOXES, ETC. ALL EQUIPMENT, DEVICES, SUPPORTS, PARTS, ETC INSTALLED ON THE EXTERIOR SHALL BE EXTERIOR-RATED. DURING COSTRUCTION ALL CONDUIT, BOXES, ETC SHALL BE PROTECTED FROM WATER INFILTRATION.
- ELECTRICAL CONTRACTOR SHALL BE RESPONSIBLE FOR COORDINATING ANY BUCKOUTS NOT SHOWN OR SLEEVE LOCATIONS FOR INDIVIDUAL RISER CONDUITS WITH THE STRUCTURAL ENGINEER.
- RECEPTACLE LOCATIONS IN THE FRONT OF HOUSE AREA TO BE COORDINATED WITH ARCHITECT AND/OR INTERIORS.
- REFER TO ARCHITECTURAL DRAWINGS FOR SLAB TO SLAB WALL LOCATIONS. CONTRACTOR SHALL PROVIDE PENETRATIONS AS REQUIRED AND FIREPROOFING INSULATION TO MAINTAIN RATING OF ANY FIRE-RATED WALLS AND FLOORS. ALL FLOOR PENETRATIONS SHALL BE FINISHED TO PROVIDE A SMOOTH SURFACE.
- PROVIDE CO DETECTORS/ALARMS AS REQUIRED BY SBC 420.5.

FLAG NOTES

- PROVIDE (2) 2" CONDUIT TO ROOF STUBBED UP FOR SOLAR SYSTEM TO ELECTRICAL ROOM. REFER TO PV PLANS FOR SOLAR SYSTEM DESIGN.
- PROVIDE STUB UP WHERE NECESSARY AND RECEPTACLE OUTLET ON ROOF. ROOFTOP RECEPTACLES SHALL BE WEATHERPROOF AND GFCI PROTECTED. SERVICE RECEPTACLE MUST BE WITHIN 25FT OF MECHANICAL EQUIPMENT. COORDINATE WITH MECHANICAL CONTRACTOR FOR FINAL MECHANICAL EQUIPMENT LOCATIONS.
- COORDINATE EXACT EQUIPMENT LOCATIONS WITH MECHANICAL CONTRACTOR PRIOR TO INSTALLATION.
- PROVIDE CONTROLLED RECEPTACLES AS REQUIRED BY WA STATE ENERGY CODE. PROVIDE MOTION SENSORS, RELAYS, OR OTHER AUTOMATIC MEANS TO AUTOMATICALLY TURN OFF THE LOWER OUTLET WHEN SPACE IS NOT OCCUPIED.
- INDOOR UNIT POWERED FROM OUTDOOR UNIT.
- CONTRACTOR TO ROUTE DATA FROM EXISTING SERVER ROOM OF EXISTING BUILDING.

WA ENERGY CODE - CONTROLLED RECEPTACLES:

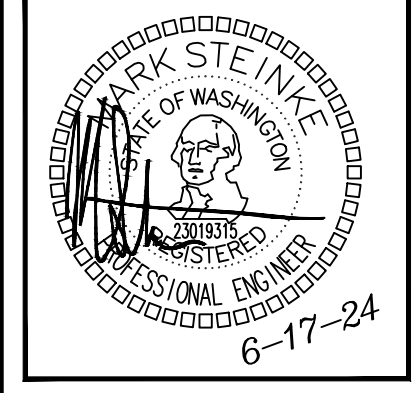
- PROVIDE CONTROLLED RECEPTACLES IN AREAS INDICATED PER WA ENERGY CODE C405.10.
- PROVIDE WATTSTOPPER DT-300 OR EQUIVALENT CEILING OCCUPANCY SENSOR AND BZ-200 CONTROL RELAYS IN ACCESSIBLE LOCATIONS.
- WHEN THE AREA IS OCCUPIED, THEN THE CONTROLLED RECEPTACLES SHALL BE ENERGIZED.
- SPLIT RECEPTACLES TO BE PROVIDED WITH CONTROLLED 120V HOT WIRED TO LOWER OUTLET AND CONTINUOUS 120V HOT WIRED TO UPPER OUTLET.



POWER PLAN - LEVEL 2

SCALE: 3/16" = 1'-0"

NO.	DATE	DESCRIPTION	REVISIONS
1	06/17/24	PERMIT RESUBMITTAL	



JUR	JUR	KC	MS
DRAWN:	DESIGNED:	CHECKED:	APPROVED:

PROJECT: ST CHARLES BORMEIO PARISH OFFICES ADDITION
7112 S 12TH ST, TACOMA, WA 98466

ROBISON ENGINEERING, INC.
19401 40TH AVE W, SUITE 302
LYNNWOOD, WA 98036
PHONE: (206)364-3343

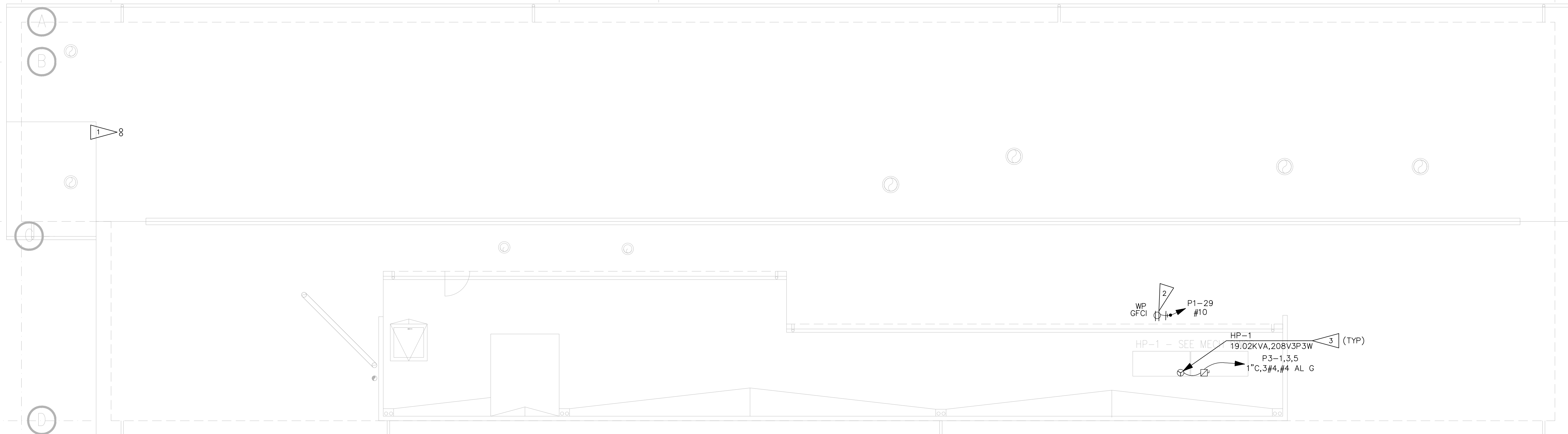
DATE: 06/17/2024
REV. NO.: 1145-008

SHEET TITLE:
POWER PLAN - LEVEL 2

SHEET NO.
E2.02

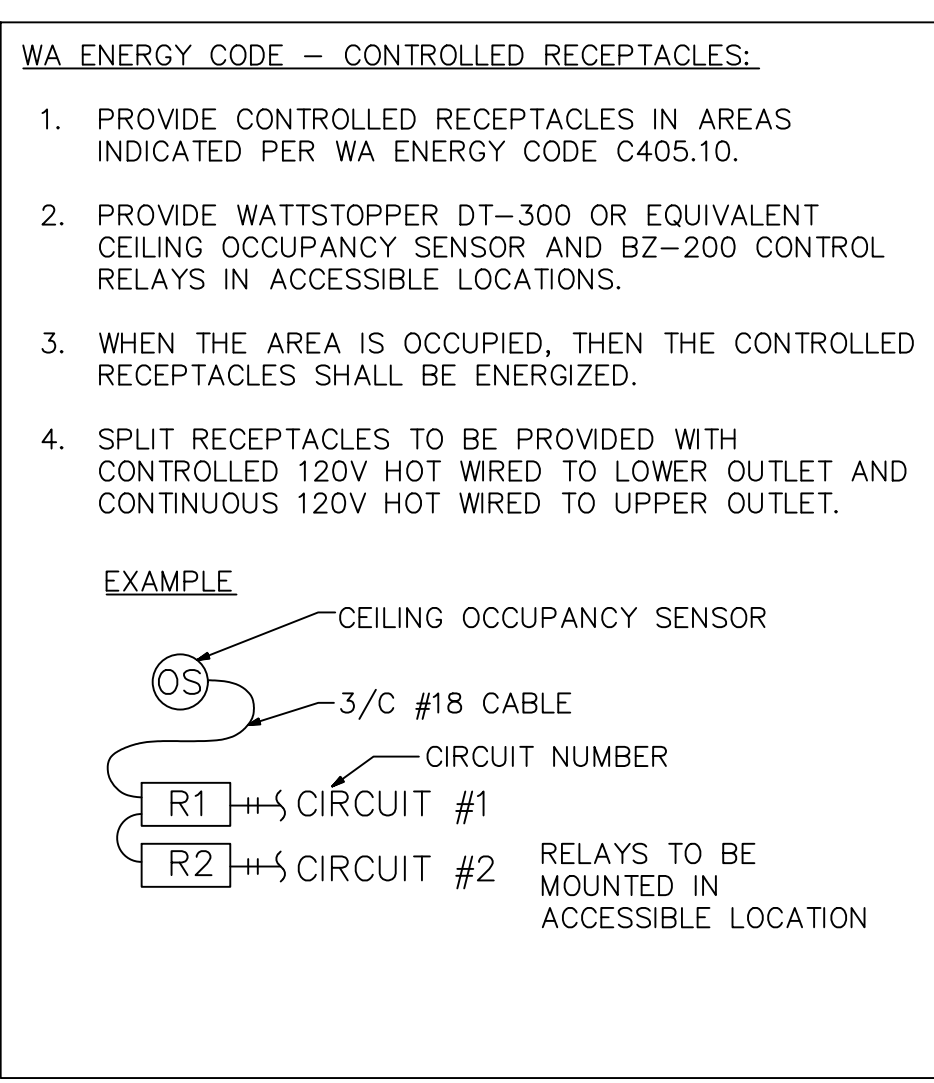
Reviewed for Code Compliance

1 2 3 4 5



- GENERAL NOTES**
- ELECTRICAL CIRCUITING IS DIAGRAMMATIC. FINAL MEANS AND METHODS ARE TO BE DETERMINED IN FIELD. CONTRACTOR IS RESPONSIBLE FOR LOAD BALANCING AND ENSURING FIELD CIRCUITING CHANGES DO NOT RESULT IN OVERLOADING OF CIRCUITS.
 - OCCUPANCY SENSOR LOCATIONS ARE NOTED ON E1.00 SERIES, LIGHTING SHEETS. FINAL DEVICE LOCATIONS AND QUANTITIES ARE TO BE DETERMINED BY CONTROLS CONTRACTOR FOR FULLY FUNCTIONAL SYSTEM.
 - REFER TO LOW VOLTAGE DRAWINGS FOR LOW VOLTAGE EQUIPMENT LAYOUT DETAILS AND POWER REQUIREMENTS. TYPICAL FOR ALL IDF/MDF ROOMS.
 - ELECTRICAL CONTRACTOR SHALL PROVIDE DEDICATED CLEAR SPACE, 6' OR TO STRUCTURAL CEILING, WHICHEVER IS LESS, ABOVE ALL ELECTRICAL EQUIPMENT.
 - MAINTAIN REQUIRED WORK SPACE ADEQUATE ILLUMINATION, ACCESS TO WORK SPACE AND HEAD ROOM ABOUT ELECTRICAL EQUIPMENT.
 - ALL EXTERIOR WIRING TO BE WATERTIGHT AND PERMANENTLY SUPPORTED WITH SUPPORTS UL LISTED FOR SUCH USAGE. SEAL ALL CONNECTIONS, BOXES, ETC. ALL EQUIPMENT, DEVICES, SUPPORTS, PARTS, ETC INSTALLED ON THE EXTERIOR SHALL BE EXTERIOR-RATED. DURING COSTRUCTION ALL CONDUIT, BOXES, ETC SHALL BE PROTECTED FROM WATER INFILTRATION.
 - ELECTRICAL CONTRACTOR SHALL BE RESPONSIBLE FOR COORDINATING ANY BUCKOUTS NOT SHOWN OR SLEEVE LOCATIONS FOR INDIVIDUAL RISER CONDUITS WITH THE STRUCTURAL ENGINEER.
 - RECEPTACLE LOCATIONS IN THE FRONT OF HOUSE AREA TO BE COORDINATED WITH ARCHITECT AND/OR INTERIORS.
 - REFER TO ARCHITECTURAL DRAWINGS FOR SLAB TO SLAB WALL LOCATIONS. CONTRACTOR SHALL PROVIDE PENETRATIONS AS REQUIRED AND FIREPROOFING INSULATION TO MAINTAIN RATING OF ANY FIRE-RATED WALLS AND FLOORS. ALL FLOOR PENETRATIONS SHALL BE FINISHED TO PROVIDE A SMOOTH SURFACE.
 - PROVIDE CO DETECTORS/ALARMS AS REQUIRED BY SBC 420.5.

- FLAG NOTES**
- PROVIDE (2) 2" CONDUIT TO ROOF STUBBED UP FOR SOLAR SYSTEM TO ELECTRICAL ROOM. REFER TO PV PLANS FOR SOLAR SYSTEM DESIGN.
 - PROVIDE STUB UP WHERE NECESSARY AND RECEPTACLE OUTLET ON ROOF. ROOFTOP RECEPTACLES SHALL BE WEATHERPROOF AND GFCI PROTECTED. SERVICE RECEPTACLE MUST BE WITHIN 25FT OF MECHANICAL EQUIPMENT. COORDINATE WITH MECHANICAL CONTRACTOR FOR FINAL MECHANICAL EQUIPMENT LOCATIONS.
 - COORDINATE EXACT EQUIPMENT LOCATIONS WITH MECHANICAL CONTRACTOR PRIOR TO INSTALLATION.
 - PROVIDE CONTROLLED RECEPTACLES AS REQUIRED BY WA STATE ENERGY CODE. PROVIDE MOTION SENSORS, RELAYS, OR OTHER AUTOMATIC MEANS TO AUTOMATICALLY TURN OFF THE LOWER OUTLET WHEN SPACE IS NOT OCCUPIED.
 - INDOOR UNIT POWERED FROM OUTDOOR UNIT.
 - CONTRACTOR TO ROUTE DATA FROM EXISTING SERVER ROOM OF EXISTING BUILDING.



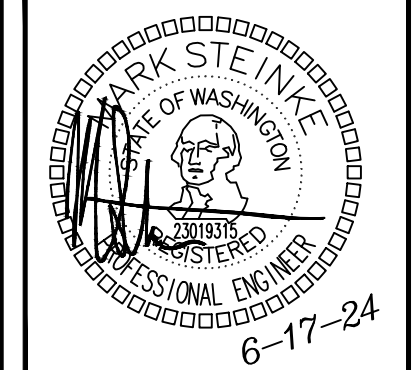
SOLAR ZONE CALCULATION

PER WASHINGTON STATE - COMMERCIAL ENERGY CODE C411.1 EXCEPTION, A SOLAR ZONE IS NOT REQUIRED WHERE THE SOLAR EXPOSURE OF THE BUILDING'S ROOF AREA IS LESS THAN 75 PERCENT OF THAT OF AN UNSHADED AREA, AS DEFINED IN SECTION C411.5.

NO SOLAR ZONE IS SHOWN.

POWER PLAN - ROOF
SCALE: 3/16" = 1'-0"

REVISIONS	
NO.	DATE
1	06/17/24
	PERMIT RESUBMITTAL
	DESCRIPTION



JUR	JUR	KC	MS
DRAWN:	DESIGNED:	CHECKED:	APPROVED:

PROJECT: ST CHARLES BORROMEO PARISH OFFICES ADDITION
7112 S 12TH ST, TACOMA, WA 98466

DATE: 06/17/2024
REI NO.: 1145-008

SHEET TITLE: POWER PLAN - ROOF

SHEET NO.: E2.03

19401 40TH AVE W, SUITE 302
LYNNWOOD, WA 98036
PHONE: (206) 364-3343

ROBISON ENGINEERING, INC.

Reviewed for Code Compliance

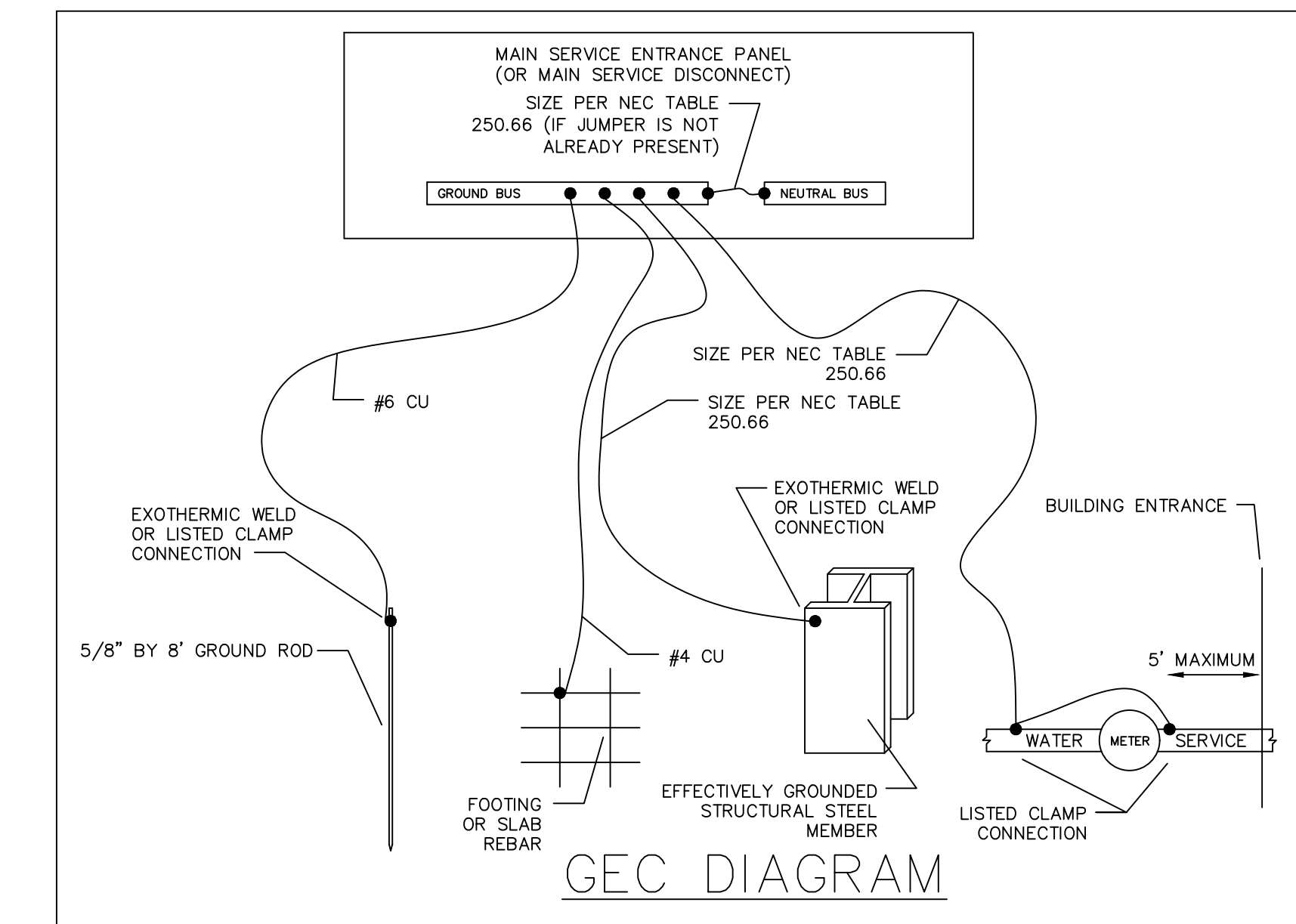
FEEDER SCHEDULE

ID	FEEDER AMPS	CONDUIT AND FEEDER	FEEDING THESE DEVICES
①	60	1-1/4" C, 3#4, #4N, #10G	ELV
②	200	2-1/2" C, 3#250kcmil AL, #250kcmil AL N, #4 AL G	P1, P2, P3
③	800	(3) 3" C, 3#400kcmil AL, #400kcmil AL N	MSB
④	50	3/4" C, 3#6, #10G	ELEV-1

SIZING METHOD: COPPER, 60°C #12 THROUGH #1, 75°C 1/0 AND ABOVE

VOLTAGE DROP SCHEDULE

DEVICE	FEEDER		BRANCH CIRCUIT			TOTAL VOLTAGE DROP
	VOLTAGE DROP	WIRE SIZE	MAX VOLTAGE DROP	WIRE SIZE	LENGTH	
MSB	1.55%	(3)#400kcmil AL	1.09% (TAP 5)	#6	91'	2.64%
ELEV-1			1.09%	#6	91'	
ELV	1.71%	#4	0.67% (CKT 7)	#12	17'	2.38%
P1	1.64%	#250kcmil AL	2.17% (CKT 4)	#10	154'	3.81%
P2	1.71%	#250kcmil AL	3.07% (CKT 2)	#10	168'	4.78%
P3	1.81%	#250kcmil AL	1.94% (CKT 1,3,5)	#4	152'	3.75%

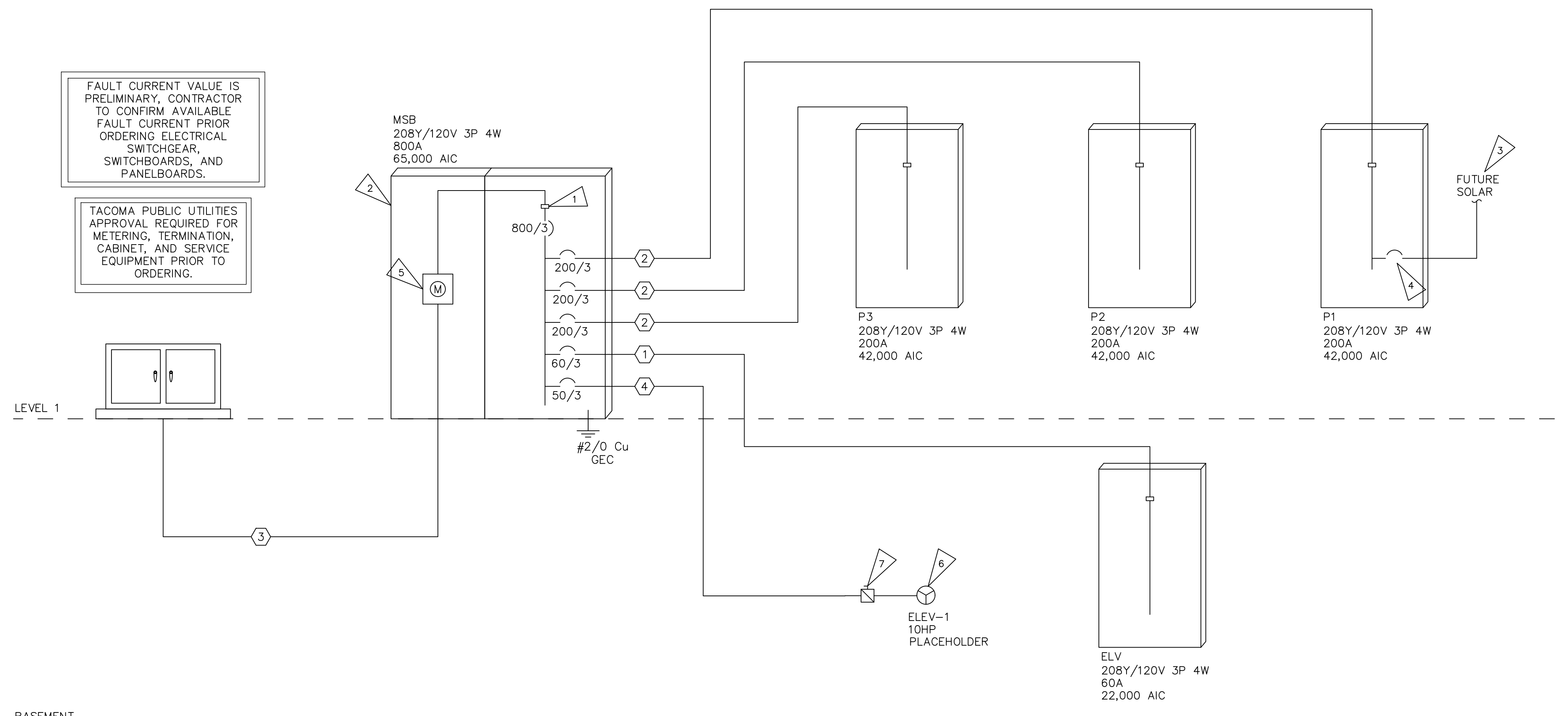


FAULT CURRENT SCHEDULE

DEVICE	FAULT	AIC RATING	L-N VOLTS	UTILITY	FEEDER	
				FAULT	SIZE	LENGTH
MSB	18,702	65,000	120V	17,495	(3)#400kcmil AL	178'
ELEV-1	2,411	22,000	120V	2,411	#6	91'
ELV	3,718	22,000	120V	3,654	#4	89'
P1	14,382	42,000	120V	13,671	#250kcmil AL	23'
P2	12,798	42,000	120V	12,227	#250kcmil AL	34'
P3	14,039	42,000	120V	13,200	#250kcmil AL	26'

ROOF -----

LEVEL 2 -----



BASEMENT -----

FLAG NOTES

1. TPU SERVICE TERMINATION POINT.
2. ALL ELECTRICAL GEAR, INCLUDING PULL BOXES, MUST BE APPROVED BY TPU PRIOR TO PURCHASING. TYPICAL.
3. PROVIDE (2) 2" CONDUIT FOR FUTURE SOLAR PATHWAY.
4. BREAKER SPACE FOR PV SYSTEM. PROVIDE (2) 2" CONDUIT TO ROOF FOR SOLAR READY PATHWAY.
5. THREE-PHASE TPU METER.
6. PROVIDE BUSSMAN CONTROL MODULE IF ELEVATOR MACHINE ROOM IS SPRINKLED.
7. COORDINATE FUSE TRIP FOR ELEVATOR LOADS.

REVISIONS	
NO.	DESCRIPTION
1	06/17/24 PERMIT RESUBMITTAL

ROBISON ENGINEERING, INC.
 19401 40TH AVE W, SUITE 302
 LYNNWOOD, WA 98036
 206-264-3343
 CONTACT: JOSH REDD

MARK STEINVE
 REGISTERED PROFESSIONAL ENGINEER
 6-17-24

JUR	JUR	KC	MS
DRAWN:	DESIGNED:	CHECKED:	APPROVED:

PROJECT: **ST CHARLES BORMEIO PARISH OFFICES ADDITION**
 7112 S 12TH ST, TACOMA, WA 98466

19401 40TH AVE W, SUITE 302
 LYNNWOOD, WA 98036
 PHONE: (206) 364-3343

ROBISON ENGINEERING, INC.

DATE: 06/17/2024
 REI NO. 1145-008

SHEET TITLE:
ONE-LINE DIAGRAM

SHEET NO.
E5.00

Check Tacoma
 Reviewed for Code Compliance

LIGHTING COMPLIANCE SUMMARY

2018 WSEC Compliance Forms for Commercial Buildings including Group R2, R3 & R4 over 3 stories and all R1 Administered by: ©2024 NEEA, All rights reserved

Project & Applicant Information table with fields: Project Title (St Charles Borromeo - 2018 WSEC), Project Address (7112 S 12th Tacoma, WA 98465), Applicant Name (Joshua Redt), Applicant Phone (206-343-3343), Applicant Email (jredt@robisonengineering.com), Date (Mar 13, 2024)

General Occupancy and General Project Types table with columns: General Occupancy, General Building Use Type, Office, Other, Building Cond., Floor Area, Project Cond., Floor Area, Floors Above Grade, Compliance Method

Lighting Project Description table with columns: Project Type, Interior/Exterior Lighting Scope, Luminaire Replacement Scope, Compliance Method, LPA Calculation Adjustment, Compliance Verification

Summary table with Project Title (St Charles Borromeo - 2018 WSEC), Date (Mar 13, 2024)

Lighting Power Calculation table with columns: NEW BUILDING - INTERIOR LIGHTING, Compliance Verification (COMPLIES)

Compliance Method table with columns: Space by space, LPA Calculation Adjustment (none)

Interior Lighting Power Allowance - Space by Space table with columns: General Space Type, Specific Space Type, Gross Interior Area (SF), LPA (Watts/SF), Total Watts Allowed (SF x LPA x 1), Total Proposed Watts (LPD + Display LPD), Compliance Status

Proposed Lighting Power Density table with columns: Fixture Type, Fixture ID, Quantity of Fixtures (QF), Watts or Wattage Limit per Fixture (WpF), Total Linear Feet (LF), Watts per Linear Foot (WpLF), Total Watts Proposed (QF x WpLF) or (LF x WpLF)

Summary table with columns: Suspended (S1E, 10, 20, 200), Suspended (B3E, 6, 31, 186), Suspended (B3, 10, 31, 310), Wall wash (D2, 2, 15, 30), Proposed Total LPD (4,530)

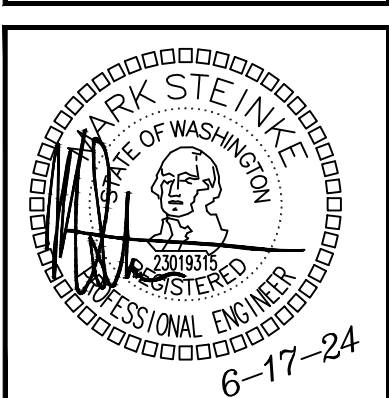
Project Title (St Charles Borromeo - 2018 WSEC), Date (Mar 13, 2024)

Proposed Fixtures Details

Proposed Fixtures Details table with columns: Fixture Type/Application, Fixture ID, Location in Documents, Lamp Type, New or Existing-to-Remain. Includes rows for Troffer, Recessed downlight, Suspended, Wall wash.

Summary table with columns: Suspended (S1E, 10, 20, 200), Suspended (B3E, 6, 31, 186), Suspended (B3, 10, 31, 310), Wall wash (D2, 2, 15, 30), Proposed Total LPD (4,530)

REVISIONS table with columns: NO., DATE, DESCRIPTION



JUR table with columns: DRAWN, DESIGNED, CHECKED, APPROVED

PROJECT: ST CHARLES BORROMEO PARISH OFFICES ADDITION 7112 S 12TH ST, TACOMA, WA 98466. Includes Robison Engineering, Inc. contact info and address.

DATE: 06/17/2024, REI NO. 1145-008

SHEET TITLE: LIGHTING COMPLIANCE FORMS

SHEET NO. E6.00

Reviews for Code Compliance