

GENERAL NOTES

- 1. DESIGN IS BASED OFF USPS STANDARD CONSTRUCTION DETAILS AND SPECIFICATIONS. IT IS THE CONTRACTOR RESPONSIBLE TO POSSESS AND TO BE FAMILIAR WITH THESE DOCUMENTS AND SCHEDULING REQUIREMENTS APPLICABLE TO THE PROJECT.

DEMOLITION NOTES

- 1. CONTRACTOR SHALL OBTAIN ALL REQUIRED PERMITS PRIOR TO ANY DEMOLITION PROCESS. CERTAIN ACTIVITIES ASSOCIATED WITH CONSTRUCTION WILL REQUIRE AIR PERMITS INCLUDING BUT NOT LIMITED TO MOBILE CONCRETE BATCH PLANTS, MOBILE ASPHALT PLANTS, CONCRETE CRUSHERS, LARGE GENERATORS, ETC. THESE ACTIVITIES WILL REQUIRE SPECIFIC WASHINGTON DEPARTMENT OF ENVIRONMENT PROTECTION OR LOCAL GOVERNING AUTHORITIES AIR PERMITS FOR INSTALLATION AND OPERATION.

GENERAL PLAN AND SURVEY NOTES

- 1. PRIOR TO STARTING CONSTRUCTION THE CONTRACTOR SHALL BE RESPONSIBLE FOR MAKING SURE THAT ALL REQUIRED PERMITS AND APPROVALS HAVE BEEN OBTAINED. NO CONSTRUCTION OR FABRICATION SHALL BEGIN UNTIL THE CONTRACTOR HAS RECEIVED AND THOROUGHLY REVIEWED ALL PLANS AND OTHER DOCUMENTS APPROVED BY ALL OF THE PERMITTING AUTHORITIES.

CONCRETE NOTES AND SPECIFICATIONS

- 1. ALL EXTERIOR SITE SPECIFIC PORTLAND CEMENT CONCRETE (PCC) (I.E. SIDEWALK, PAVEMENT OR CURBING) SHALL MEET THE MINIMUM REQUIREMENTS OF THE LATEST EDITIONS OF THE WASHINGTON DEPARTMENT OF TRANSPORTATION (WSDOT) AND THE AMERICAN CONCRETE INSTITUTE (ACI) SPECIFICATIONS USING THE RESPECTIVE ASTM STANDARDS FOR MATERIALS USED, MIXING, TRANSPORTATION, FORMING, PLACEMENT, CURING, AND SEALING.

Table with 2 columns: SLAB THICKNESS--" and MAXIMUM JOINT SPACING. Rows include: LESS THAN 4 INCHES (8 FEET), 4 INCHES - 5 INCHES (10 FEET), 5 INCHES - 6 INCHES (12.5 FEET), 6 INCHES - 8 INCHES (15 FEET), 8 INCHES - 10 INCHES (15 FEET).

GENERAL UTILITY NOTES

- 1. CONTRACTOR SHALL CONTACT ALL UTILITY COMPANIES IMMEDIATELY AFTER BID IS AWARDED AND ENSURE THE UTILITY COMPANIES HAVE THE ESSENTIALS REQUIRED FOR COMPLETE SERVICE INSTALLATION. CONTRACTOR SHALL NOTIFY CONSTRUCTION MANAGER OF ANY TIME FRAMES ESTABLISHED BY UTILITY COMPANIES WHICH WILL NOT MEET OPENING DATE.

GRADING PLAN NOTES

- 1. AT A MINIMUM ALL FILLED AREAS SHALL BE COMPACTED TO 98% OF STANDARD PROCTOR MAXIMUM DRY DENSITY PER A S.T.M. TEST D-698. MOISTURE CONTENT AT TIME OF PLACEMENT SHALL NOT EXCEED 2% ABOVE NOR 2% BELOW OPTIMUM.

DUST CONTROL NOTES

- 1. DUST CONTROL SHALL BE MAINTAINED THROUGHOUT CONSTRUCTION. IF POSSIBLE GRADING SHALL BE DONE BY PHASING IN ORDER TO MINIMIZE THE AMOUNT OF LAND DISTURBANCE AT ONE TIME. IF PHASING IS NOT AN OPTION, DUST SHALL BE CONTROLLED WITH WATER DURING EARTHWORK OPERATIONS.

SPILLS AND CONTAMINATION

- 1. CONSTRUCTION PERSONNEL, INCLUDING SUBCONTRACTORS WHO MAY USE OR HANDLE HAZARDOUS OR TOXIC MATERIALS, SHALL BE MADE AWARE OF THE FOLLOWING GENERAL GUIDELINES REGARDING DISPOSAL AND HANDLING OF HAZARDOUS AND CONSTRUCTION WASTES:

SHEET INDEX

Table with 2 columns: SHEET NUMBER and SHEET NAME. Rows include: C001 GENERAL NOTES, CD100 EXISTING CONDITIONS AND DEMOLITION PLAN, C200 PROPOSED CONDITIONS, C500 DETAILS.

C001

Scale: AS INDICATED Date: 02/02/2024 Project: LYNNWOOD VNF USPS Project Number: E00779

90% DESIGN SUBMITTAL 02/02/2024

REVISONS: A

US Postal Service Facilities Department, 475 L'Etrion Plaza, Washington, D.C. 20260

UNITED STATES POSTAL SERVICE

LYNNWOOD VNF 6821 208TH ST SW LYNNWOOD, WA 98036

WSP USA INC. 211 N. BROADWAY SUITE 2800 ST. LOUIS, MO 63102 314206-4444

WSP USA INC. 211 N. BROADWAY SUITE 2800 ST. LOUIS, MO 63102 314206-4444

WSP USA INC. 211 N. BROADWAY SUITE 2800 ST. LOUIS, MO 63102 314206-4444

WSP USA INC. 211 N. BROADWAY SUITE 2800 ST. LOUIS, MO 63102 314206-4444

WSP USA INC. 211 N. BROADWAY SUITE 2800 ST. LOUIS, MO 63102 314206-4444

WSP USA INC. 211 N. BROADWAY SUITE 2800 ST. LOUIS, MO 63102 314206-4444

WSP USA INC. 211 N. BROADWAY SUITE 2800 ST. LOUIS, MO 63102 314206-4444

WSP USA INC. 211 N. BROADWAY SUITE 2800 ST. LOUIS, MO 63102 314206-4444

WSP USA INC. 211 N. BROADWAY SUITE 2800 ST. LOUIS, MO 63102 314206-4444

WSP USA INC. 211 N. BROADWAY SUITE 2800 ST. LOUIS, MO 63102 314206-4444

WSP USA INC. 211 N. BROADWAY SUITE 2800 ST. LOUIS, MO 63102 314206-4444

WSP USA INC. 211 N. BROADWAY SUITE 2800 ST. LOUIS, MO 63102 314206-4444

WSP USA INC. 211 N. BROADWAY SUITE 2800 ST. LOUIS, MO 63102 314206-4444

WSP USA INC. 211 N. BROADWAY SUITE 2800 ST. LOUIS, MO 63102 314206-4444

WSP USA INC. 211 N. BROADWAY SUITE 2800 ST. LOUIS, MO 63102 314206-4444

WSP USA INC. 211 N. BROADWAY SUITE 2800 ST. LOUIS, MO 63102 314206-4444

WSP USA INC. 211 N. BROADWAY SUITE 2800 ST. LOUIS, MO 63102 314206-4444

WSP USA INC. 211 N. BROADWAY SUITE 2800 ST. LOUIS, MO 63102 314206-4444

WSP USA INC. 211 N. BROADWAY SUITE 2800 ST. LOUIS, MO 63102 314206-4444

WSP USA INC. 211 N. BROADWAY SUITE 2800 ST. LOUIS, MO 63102 314206-4444

WSP USA INC. 211 N. BROADWAY SUITE 2800 ST. LOUIS, MO 63102 314206-4444

WSP USA INC. 211 N. BROADWAY SUITE 2800 ST. LOUIS, MO 63102 314206-4444

WSP USA INC. 211 N. BROADWAY SUITE 2800 ST. LOUIS, MO 63102 314206-4444

WSP USA INC. 211 N. BROADWAY SUITE 2800 ST. LOUIS, MO 63102 314206-4444

WSP USA INC. 211 N. BROADWAY SUITE 2800 ST. LOUIS, MO 63102 314206-4444

WSP USA INC. 211 N. BROADWAY SUITE 2800 ST. LOUIS, MO 63102 314206-4444

WSP USA INC. 211 N. BROADWAY SUITE 2800 ST. LOUIS, MO 63102 314206-4444

WSP USA INC. 211 N. BROADWAY SUITE 2800 ST. LOUIS, MO 63102 314206-4444

WSP USA INC. 211 N. BROADWAY SUITE 2800 ST. LOUIS, MO 63102 314206-4444

WSP USA INC. 211 N. BROADWAY SUITE 2800 ST. LOUIS, MO 63102 314206-4444

WSP USA INC. 211 N. BROADWAY SUITE 2800 ST. LOUIS, MO 63102 314206-4444

WSP USA INC. 211 N. BROADWAY SUITE 2800 ST. LOUIS, MO 63102 314206-4444

WSP USA INC. 211 N. BROADWAY SUITE 2800 ST. LOUIS, MO 63102 314206-4444

WSP USA INC. 211 N. BROADWAY SUITE 2800 ST. LOUIS, MO 63102 314206-4444

WSP USA INC. 211 N. BROADWAY SUITE 2800 ST. LOUIS, MO 63102 314206-4444

WSP USA INC. 211 N. BROADWAY SUITE 2800 ST. LOUIS, MO 63102 314206-4444

WSP USA INC. 211 N. BROADWAY SUITE 2800 ST. LOUIS, MO 63102 314206-4444

WSP USA INC. 211 N. BROADWAY SUITE 2800 ST. LOUIS, MO 63102 314206-4444

WSP USA INC. 211 N. BROADWAY SUITE 2800 ST. LOUIS, MO 63102 314206-4444

WSP USA INC. 211 N. BROADWAY SUITE 2800 ST. LOUIS, MO 63102 314206-4444

WSP USA INC. 211 N. BROADWAY SUITE 2800 ST. LOUIS, MO 63102 314206-4444

WSP USA INC. 211 N. BROADWAY SUITE 2800 ST. LOUIS, MO 63102 314206-4444

WSP USA INC. 211 N. BROADWAY SUITE 2800 ST. LOUIS, MO 63102 314206-4444

WSP USA INC. 211 N. BROADWAY SUITE 2800 ST. LOUIS, MO 63102 314206-4444

WSP USA INC. 211 N. BROADWAY SUITE 2800 ST. LOUIS, MO 63102 314206-4444

WSP USA INC. 211 N. BROADWAY SUITE 2800 ST. LOUIS, MO 63102 314206-4444

WSP USA INC. 211 N. BROADWAY SUITE 2800 ST. LOUIS, MO 63102 314206-4444

WSP USA INC. 211 N. BROADWAY SUITE 2800 ST. LOUIS, MO 63102 314206-4444

WSP USA INC. 211 N. BROADWAY SUITE 2800 ST. LOUIS, MO 63102 314206-4444

WSP USA INC. 211 N. BROADWAY SUITE 2800 ST. LOUIS, MO 63102 314206-4444

WSP USA INC. 211 N. BROADWAY SUITE 2800 ST. LOUIS, MO 63102 314206-4444

WSP USA INC. 211 N. BROADWAY SUITE 2800 ST. LOUIS, MO 63102 314206-4444

WSP USA INC. 211 N. BROADWAY SUITE 2800 ST. LOUIS, MO 63102 314206-4444

WSP USA INC. 211 N. BROADWAY SUITE 2800 ST. LOUIS, MO 63102 314206-4444

WSP USA INC. 211 N. BROADWAY SUITE 2800 ST. LOUIS, MO 63102 314206-4444

WSP USA INC. 211 N. BROADWAY SUITE 2800 ST. LOUIS, MO 63102 314206-4444

WSP USA INC. 211 N. BROADWAY SUITE 2800 ST. LOUIS, MO 63102 314206-4444

WSP USA INC. 211 N. BROADWAY SUITE 2800 ST. LOUIS, MO 63102 314206-4444

WSP USA INC. 211 N. BROADWAY SUITE 2800 ST. LOUIS, MO 63102 314206-4444

WSP USA INC. 211 N. BROADWAY SUITE 2800 ST. LOUIS, MO 63102 314206-4444

WSP USA INC. 211 N. BROADWAY SUITE 2800 ST. LOUIS, MO 63102 314206-4444

WSP USA INC. 211 N. BROADWAY SUITE 2800 ST. LOUIS, MO 63102 314206-4444

WSP USA INC. 211 N. BROADWAY SUITE 2800 ST. LOUIS, MO 63102 314206-4444

WSP USA INC. 211 N. BROADWAY SUITE 2800 ST. LOUIS, MO 63102 314206-4444

WSP USA INC. 211 N. BROADWAY SUITE 2800 ST. LOUIS, MO 63102 314206-4444

WSP USA INC. 211 N. BROADWAY SUITE 2800 ST. LOUIS, MO 63102 314206-4444

WSP USA INC. 211 N. BROADWAY SUITE 2800 ST. LOUIS, MO 63102 314206-4444

WSP USA INC. 211 N. BROADWAY SUITE 2800 ST. LOUIS, MO 63102 314206-4444

WSP USA INC. 211 N. BROADWAY SUITE 2800 ST. LOUIS, MO 63102 314206-4444

WSP USA INC. 211 N. BROADWAY SUITE 2800 ST. LOUIS, MO 63102 314206-4444

WSP USA INC. 211 N. BROADWAY SUITE 2800 ST. LOUIS, MO 63102 314206-4444

WSP USA INC. 211 N. BROADWAY SUITE 2800 ST. LOUIS, MO 63102 314206-4444

WSP USA INC. 211 N. BROADWAY SUITE 2800 ST. LOUIS, MO 63102 314206-4444

WSP USA INC. 211 N. BROADWAY SUITE 2800 ST. LOUIS, MO 63102 314206-4444

WSP USA INC. 211 N. BROADWAY SUITE 2800 ST. LOUIS, MO 63102 314206-4444

WSP USA INC. 211 N. BROADWAY SUITE 2800 ST. LOUIS, MO 63102 314206-4444

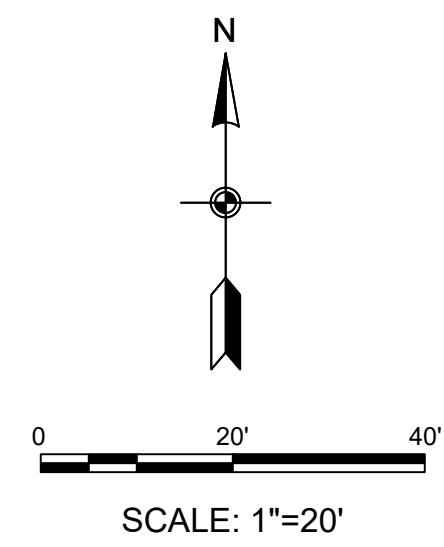
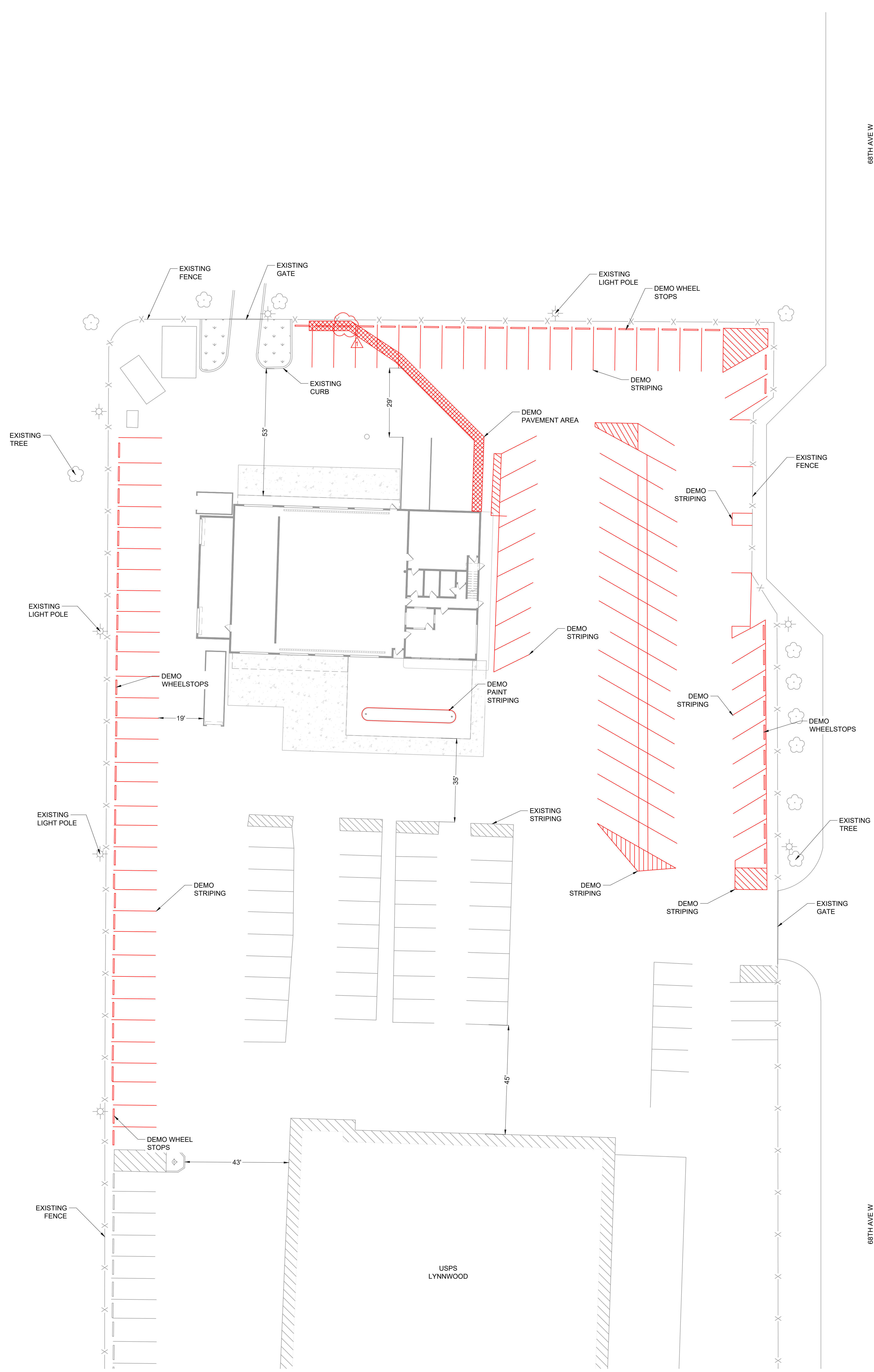
WSP USA INC. 211 N. BROADWAY SUITE 2800 ST. LOUIS, MO 63102 314206-4444

WSP USA INC. 211 N. BROADWAY SUITE 2800 ST. LOUIS, MO 63102 314206-4444

WSP USA INC. 211 N. BROADWAY SUITE 2800 ST. LOUIS, MO 63102 314206-4444

WSP USA INC. 211 N. BROADWAY SUITE 2800 ST. LOUIS, MO 63102 314206-4444

WSP USA INC. 211 N. BROADWAY SUITE 2800 ST. LOUIS, MO 63102 314206-4444

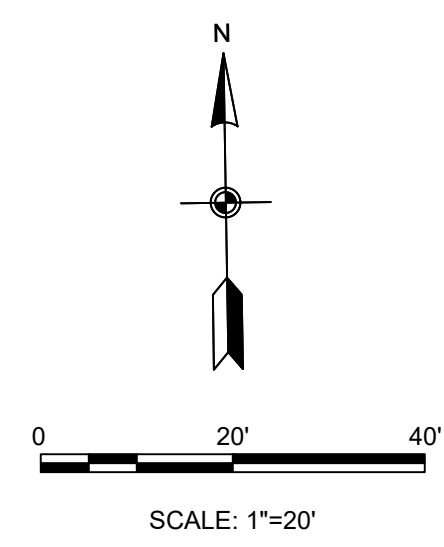
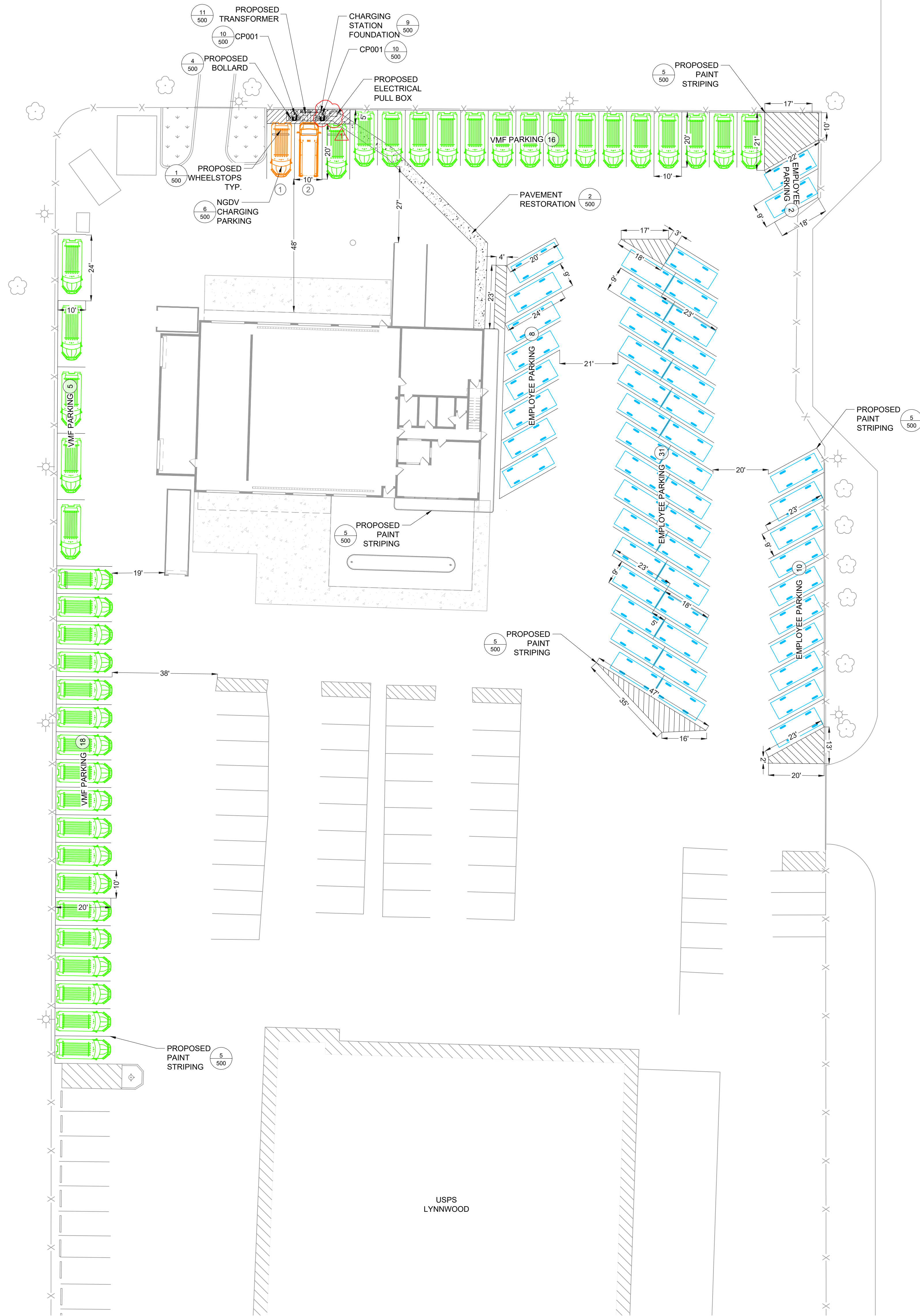


LEGEND

- EXISTING GRASS AREA
- EXISTING BUILDING
- EXISTING FENCE
- EXISTING PAINT STRIPING
- EXISTING GATE
- EXISTING BOLLARD
- EXISTING FIRE HYDRANT
- EXISTING LIGHT POST
- EXISTING TREE
- DEMO PAINT STRIPING
- DEMO PAVEMENT

NOTES:

1. NO TITLE SEARCH OR PROPERTY BOUNDARY SURVEY WAS COMPLETED FOR THIS PROJECT. NO BOUNDARY LINES ARE DEPICTED ON THIS DATABASE.
2. A SUBSURFACE UTILITY INVESTIGATION HAS NOT BEEN PERFORMED BY WSP. WASHINGTON 811 SHOULD BE CONTACTED PRIOR TO COMMENCING ANY EXCAVATION. (800-424-6555). STORM AND SEWER CONNECTIONS WERE EXCLUDED FROM THIS SCOPE OF SERVICE AND ARE NOT SHOWN HEREON.
3. COORDINATES SHOWN BASED ON PUBLICLY AVAILABLE DATA. CONTRACTOR TO ESTABLISH BEARINGS AND COORDINATES SHOWN HEREON, IF ANY, ARE BASED ON THE WASHINGTON STATE PLANE COORDINATE SYSTEM, NORTH ZONE, NORTH AMERICAN DATUM OF 1983.
4. ELEVATIONS SHOWN HEREON ARE BASED ON THE NORTH AMERICAN VERTICAL DATUM OF 1988 (NAVD 88) (GEOID 12B).
5. FINAL LOCATIONS TO BE FIELD VERIFIED PRIOR TO FINAL INSTALLATION. DEVIATIONS TO BE COORDINATED WITH OWNER AND ENGINEER.
6. CONTRACTOR TO DEMO ANY ADDITIONAL PAINT STRIPING ON SITE THAT CONFLICTS WITH NEW PROPOSED STRIPING.



LEGEND

	EXISTING GRASS AREA
	EXISTING PAINT STRIPING
	EXISTING FENCE
	EXISTING GATE
	EXISTING BOLLARD
	EXISTING LIGHT POST
	EXISTING TREE
	EXISTING FIRE HYDRANT
	PROPOSED PAINT STRIPING
	PROPOSED PAVEMENT RESTORATION
	VMF PARKING
	EMPLOYEE PARKING
	VMF CHARGING PARKING

- NOTES:**
- NO TITLE SEARCH OR PROPERTY BOUNDARY SURVEY WAS COMPLETED FOR THIS PROJECT. NO BOUNDARY LINES ARE DEPICTED ON THIS DATABASE.
 - A SUBSURFACE UTILITY INVESTIGATION HAS NOT BEEN PERFORMED BY WSP. WASHINGTON UTC SHOULD BE CONTACTED PRIOR TO COMMENCING ANY EXCAVATION. (800-424-5555). STORM AND SEWER CONNECTIONS WERE EXCLUDED FROM THIS SCOPE OF SERVICE AND ARE NOT SHOWN HEREON.
 - COORDINATES SHOWN BASED ON PUBLICLY AVAILABLE DATA. CONTRACTOR TO ESTABLISH BEARINGS AND COORDINATES SHOWN HEREON. IF ANY, ARE BASED ON THE WASHINGTON STATE PLANE COORDINATE SYSTEM, NORTH ZONE, NORTH AMERICAN DATUM OF 1983.
 - ELEVATIONS SHOWN HEREON ARE BASED ON THE NORTH AMERICAN VERTICAL DATUM OF 1988 (NAVD 88) (GEOID 12B).
 - FINAL LOCATIONS TO BE FIELD VERIFIED PRIOR TO FINAL INSTALLATION. DEVIATIONS TO BE COORDINATED WITH OWNER AND ENGINEER.
 - CONTRACTOR TO REPAIR ALL SIZEABLE CRACKS ALONG EXISTING CONCRETE.
 - CONTRACTOR TO REPAINT ALL EXISTING BOLLARDS ON SITE.

PARKING SPACES

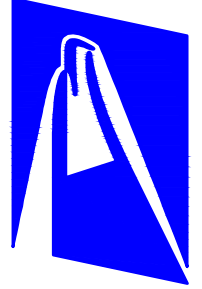
PARKING TYPE	PROVIDED	KIT No.
EMPLOYEE PARKING	51	
VMF PARKING	39	
VMF CHARGING PARKING	2	CP001

*FINAL CHARGER SCHEDULE TO BE DEPICTED IN ELECTRICAL PLANS. ASSOCIATED CHARGER PER PARKING NUMBER TO BE DEPICTED IN ELECTRICAL PLANS.

C200 PROPOSED CONDITIONS

Scale: AS INDICATED Date: 02/02/2024
 Project: LYNNWOOD VMF
 USPS Project Number: E00779

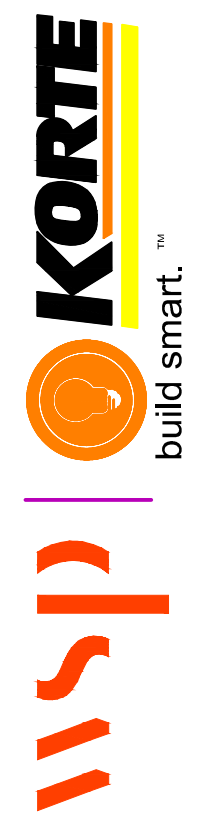
REVISIONS:



UNITED STATES POSTAL SERVICE

LYNNWOOD VMF
 6821 208TH ST SW
 LYNNWOOD, WA 98036

WSP USA INC.
 211 N. BROADWAY
 SUITE 2800
 ST. LOUIS, MO 63102
 314/206-4444

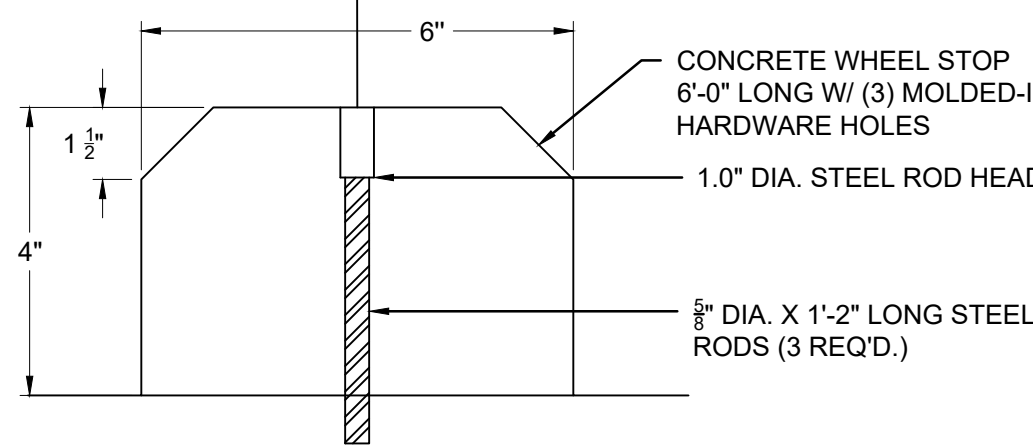


© Copyright 1997-2015, United States Postal Service

US Postal Service Facilities Department, 475 L'Enfant Plaza, Washington, D.C. 20260

VEHICLE TYPE	PARKING ORIENTATION	
	REAR	FRONT
BEV/ICE NGDV SPACES	4'-6"	3'-0"
BEV COTS SPACES	3'-6"	2'-9"
EMPLOYEE/RETAIL	3'-0"	3'-0"

REFER TO 'DIMENSION TABLE' FOR DETAILS
DIMENSION REFERS TO ANY VERTICAL OBSTRUCTION, OR THE EDGE OF TRANSVERSE STRIPING

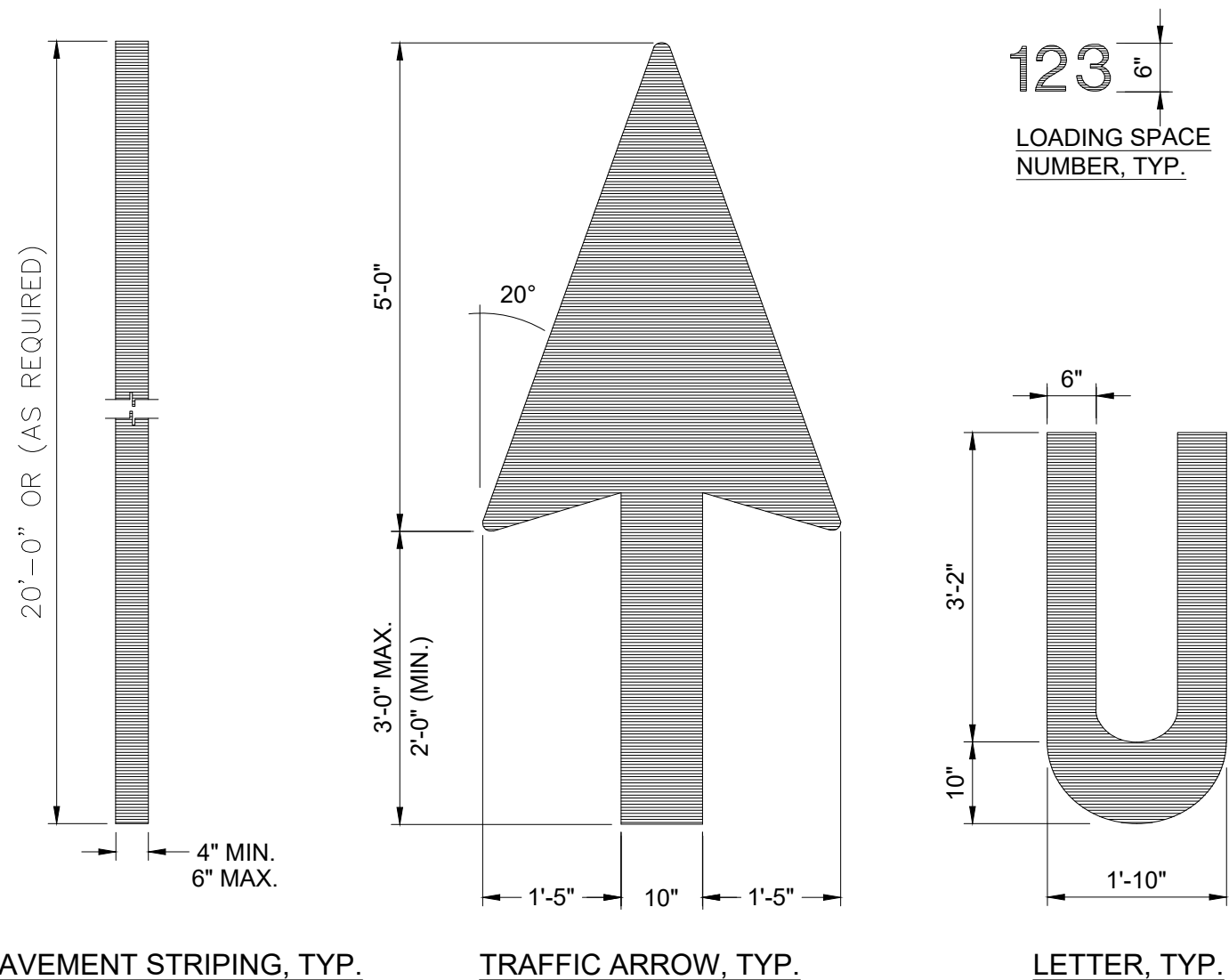


NOTES:

- SEE SITE PLAN FOR LOCATION AND QUANTITY OF WHEELSTOPS.
- SEE USPS PLAN AND THE PARKING ENLARGEMENTS FOR THE CAR PARKING ORIENTATIONS AS DESCRIBED IN THE 'DIMENSION TABLE' ABOVE.
- WHEN APPLICABLE IN CONCRETE PAVEMENTS, WHEEL STOPS SHALL BE ANCHORED TO CONCRETE WITH HDI+ 1/4" DROP-IN ANCHORS, 1" EMBEDMENT W/ 1/4" THREADED ROD. WHEELSTOP MATERIAL AND INSTALLATION SHALL BE PER 'BARCO PRODUCTS' STANDARDS AND SPECIFICATIONS (OR APPROVED EQUAL).

1 CONCRETE WHEEL STOP

NTS



PAVEMENT STRIPING, TYP.

TRAFFIC ARROW, TYP.

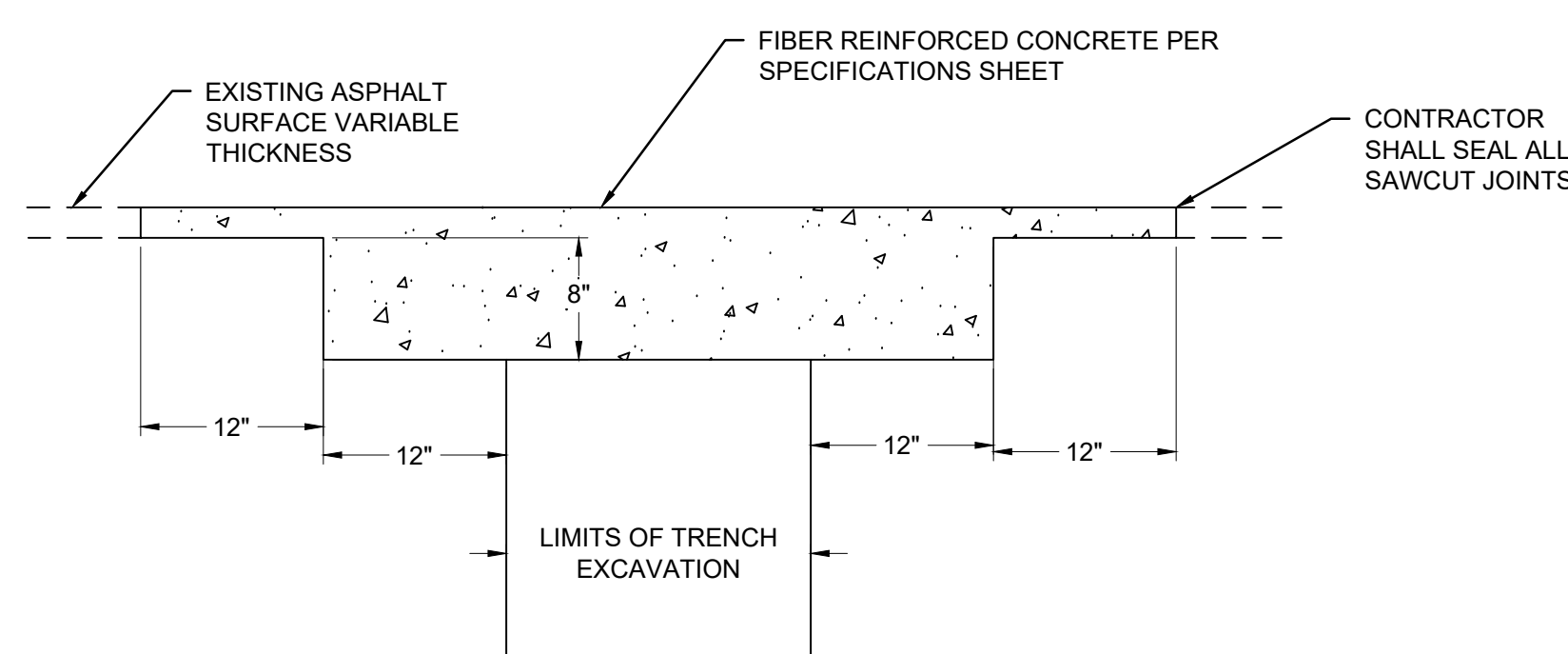
LETTER, TYP.

NOTE:

- USE NON-REFLECTIVE WHITE PAINT, TYP. BUT USE YELLOW PAINT ON CONCRETE OR OTHER SURFACES WHERE WHITE PAINT DOES NOT PROVIDE SUFFICIENT CONTRAST.

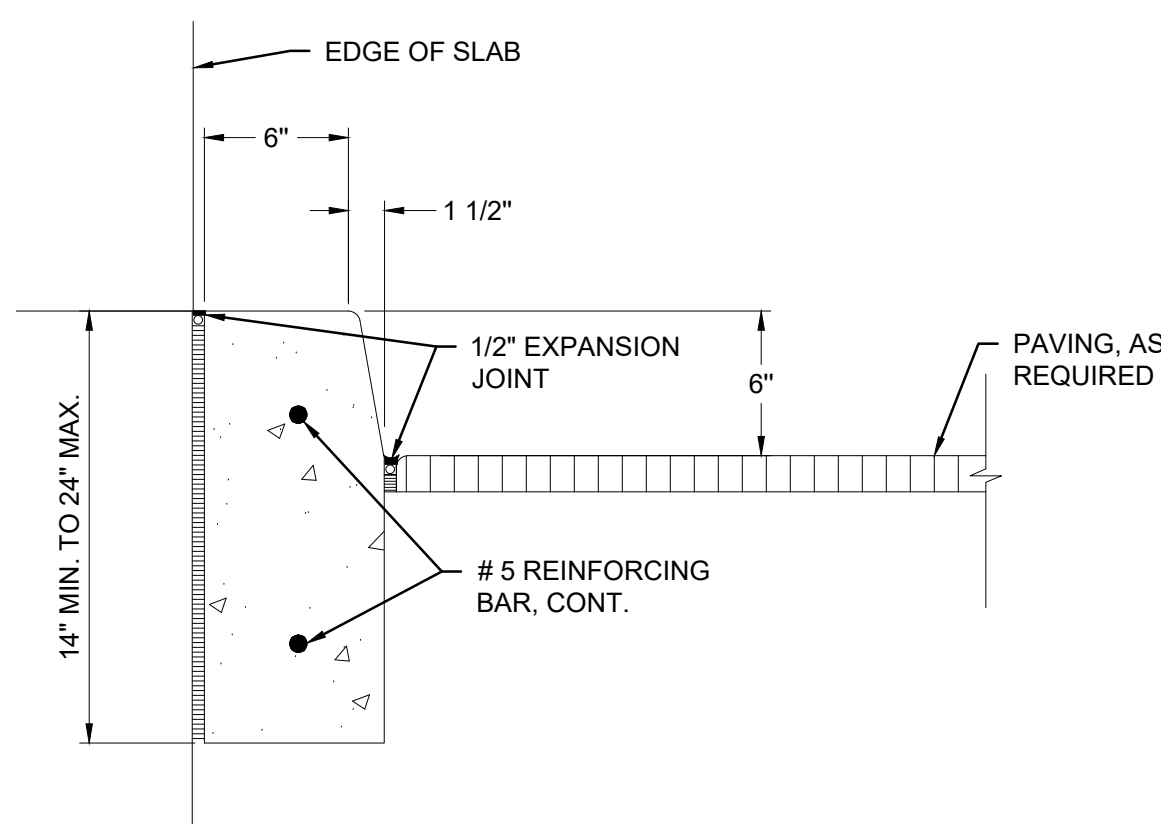
5 PAVEMENT MARKINGS

NTS



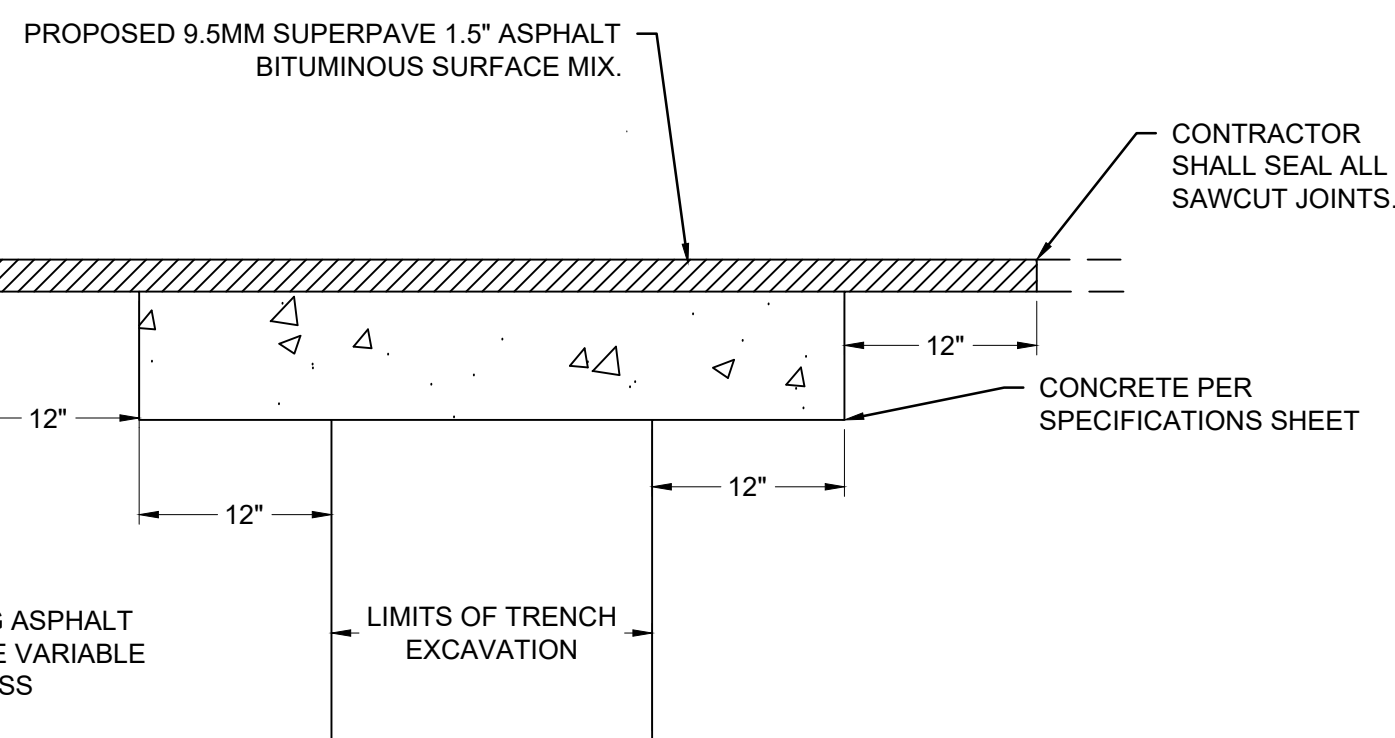
7 CONCRETE RESTORATION SECTION

NTS



8 CURBS

NTS

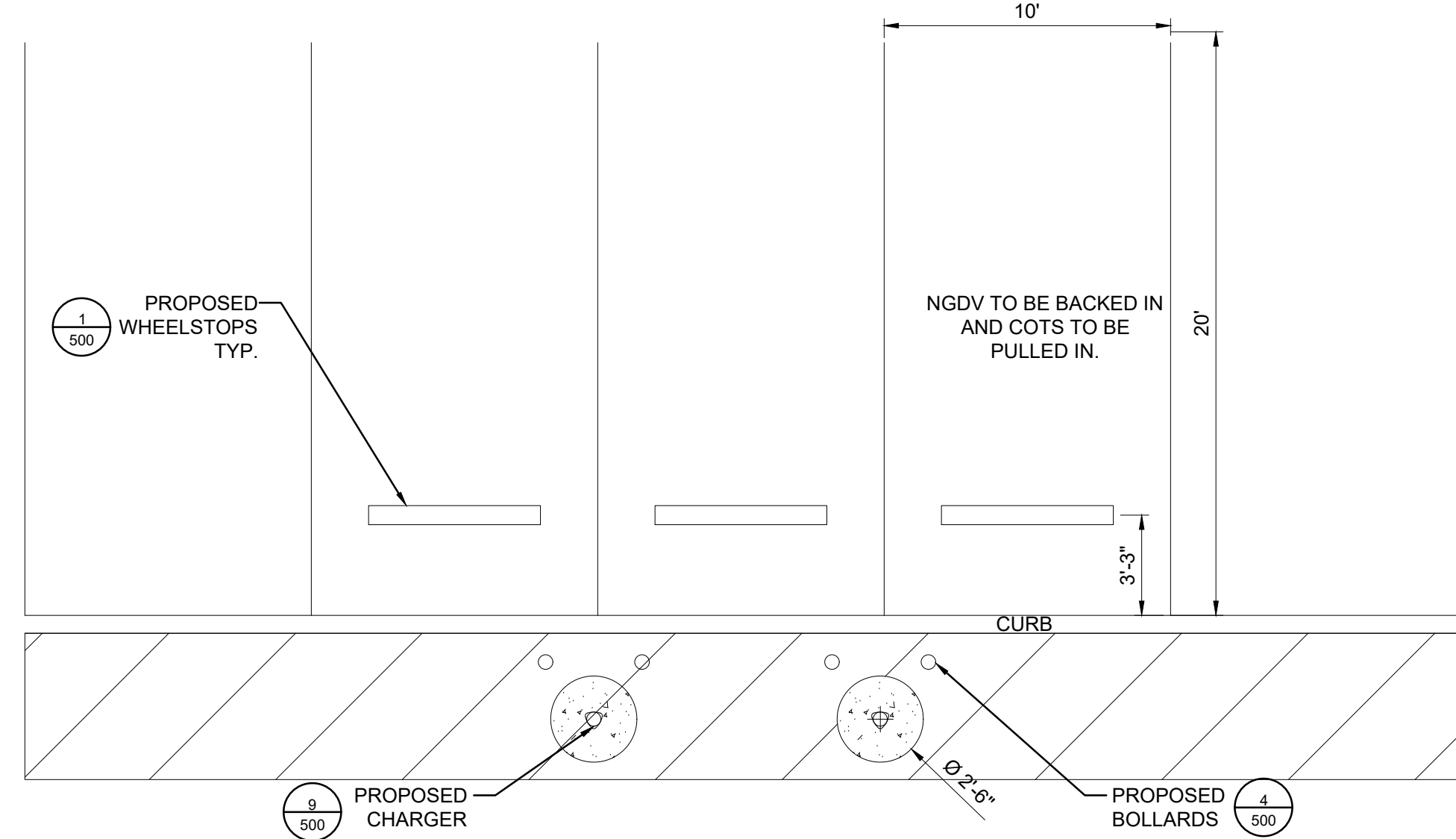


NOTE:

- MATCH EXISTING GRADE TO FACILITATE EXISTING DRAINAGE PATTERN.

2 PAVEMENT RESTORATION SECTION

NTS

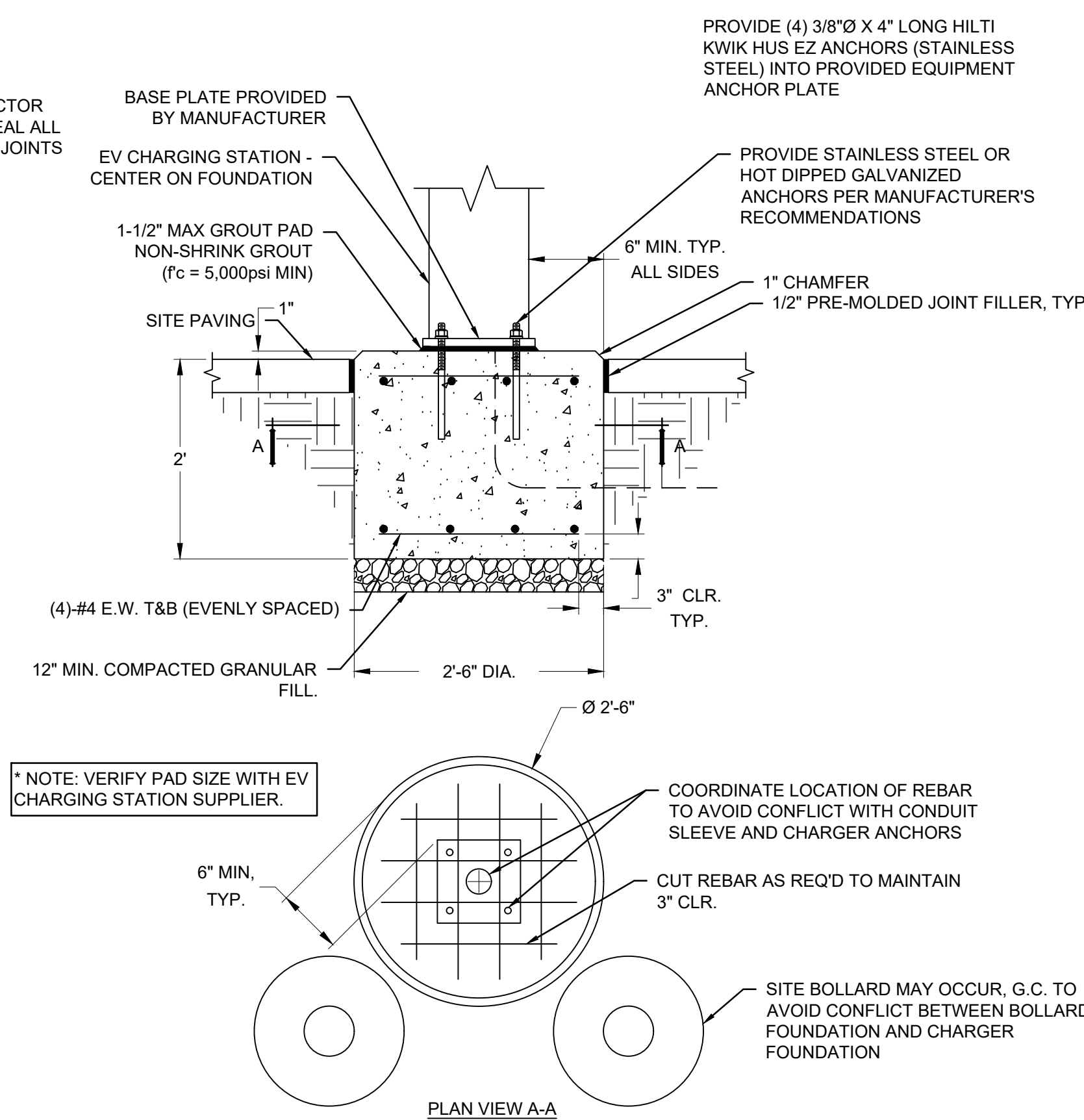


NOTE:

- REDUCTION OF ONE OR MORE EXISTING PARKING SPOTS LIKELY TO OCCUR TO SUPPORT INSTALLATION
- COTS TO BE PULLED IN, NGDVS TO BE BACKED IN.
- FRONT OF CHARGER TO FACE TOWARDS PARKING SPACES.

6 STANDARD NGDV PARKING DETAIL

NTS

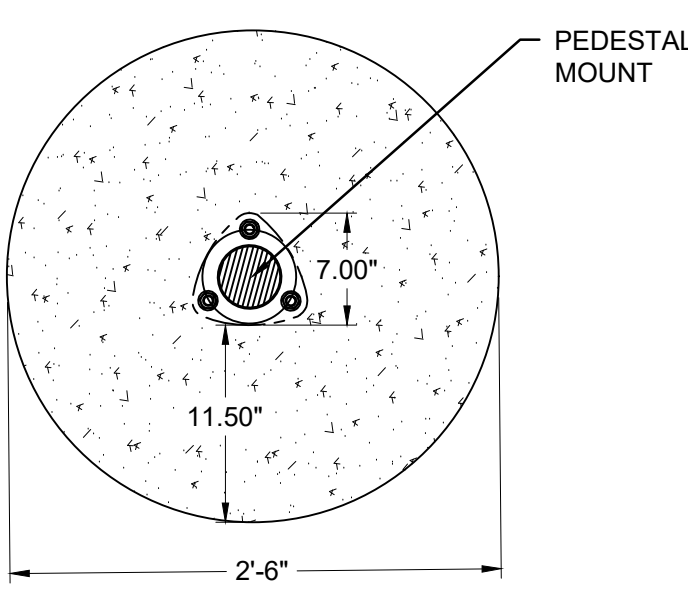


*NOTE: VERIFY PAD SIZE WITH EV CHARGING STATION SUPPLIER.

- CONCRETE FOUNDATIONS SHOULD BE SUPPORTED ON A 12 INCH COMPACTED LAYER OF APPROVED FREE-DRAINING GRANULAR MATERIAL.
- APPROVED MATERIAL SHOULD BE COMPACTED OVER THE FULL WIDTH OF THE INFILL AREA UNTIL VISIBLE DEFORMATION OF THE BACKFILL CEASES.

9 CHARGING STATION FOUNDATION DETAIL

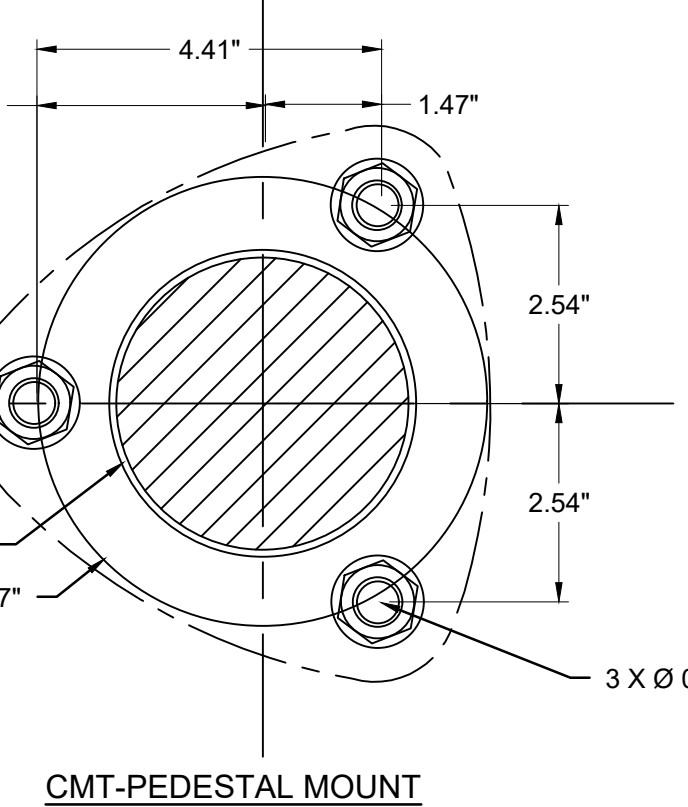
NTS



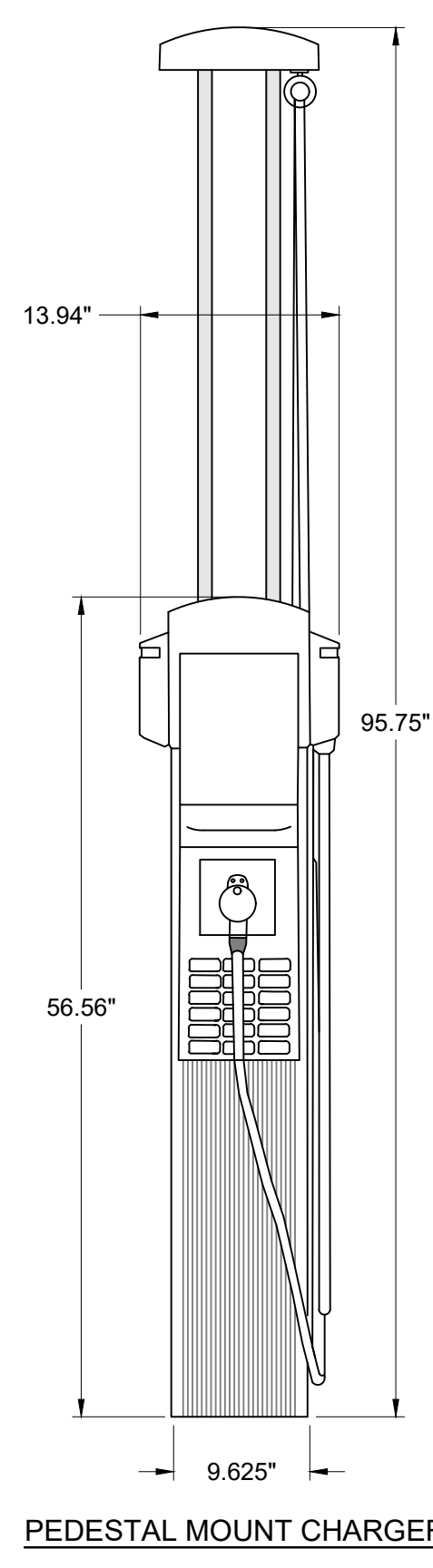
CHARGING STATION

NOTE:

- FRONT OF CHARGER TO FACE TOWARDS PARKING SPACES.



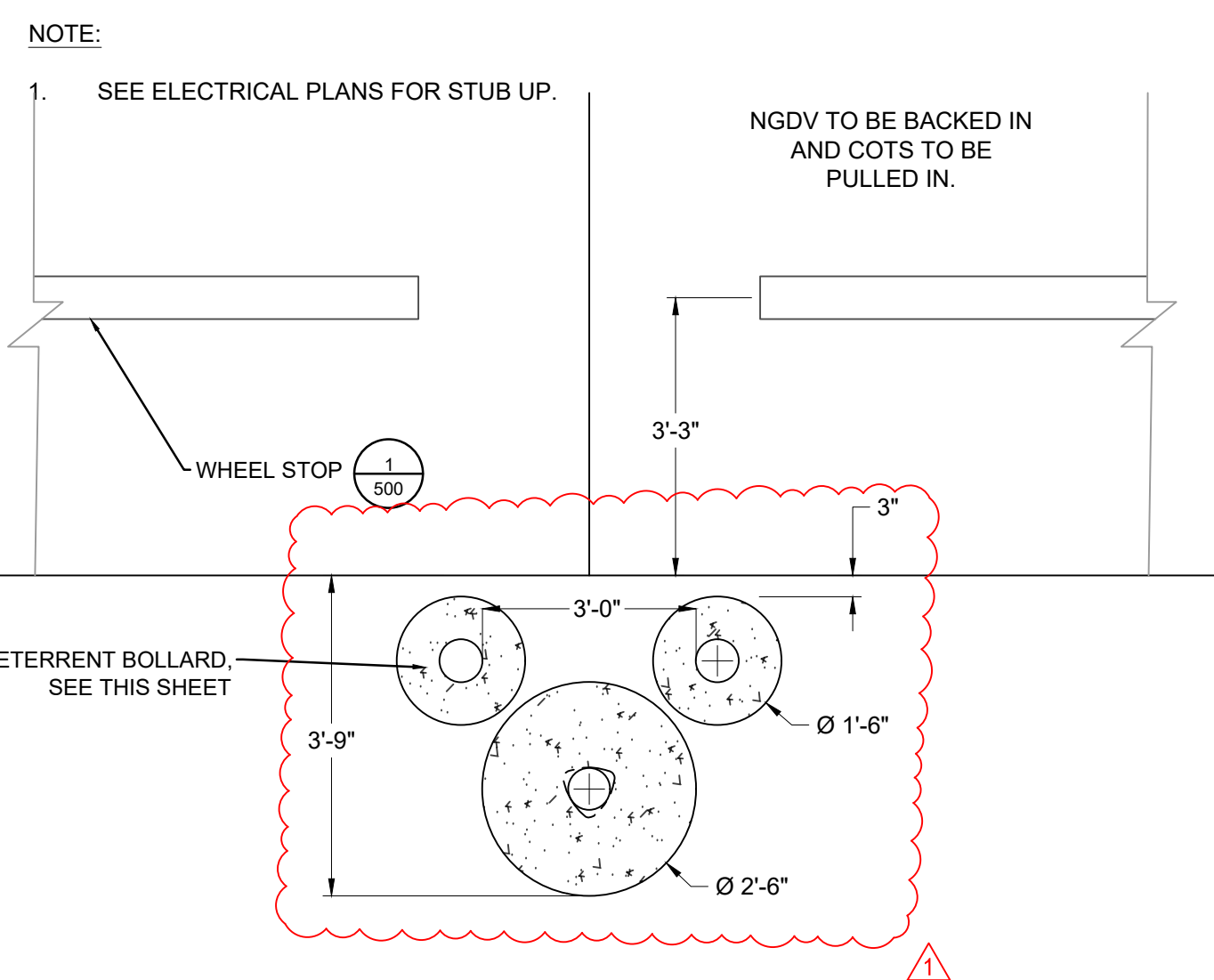
CMT-PEDESTAL MOUNT



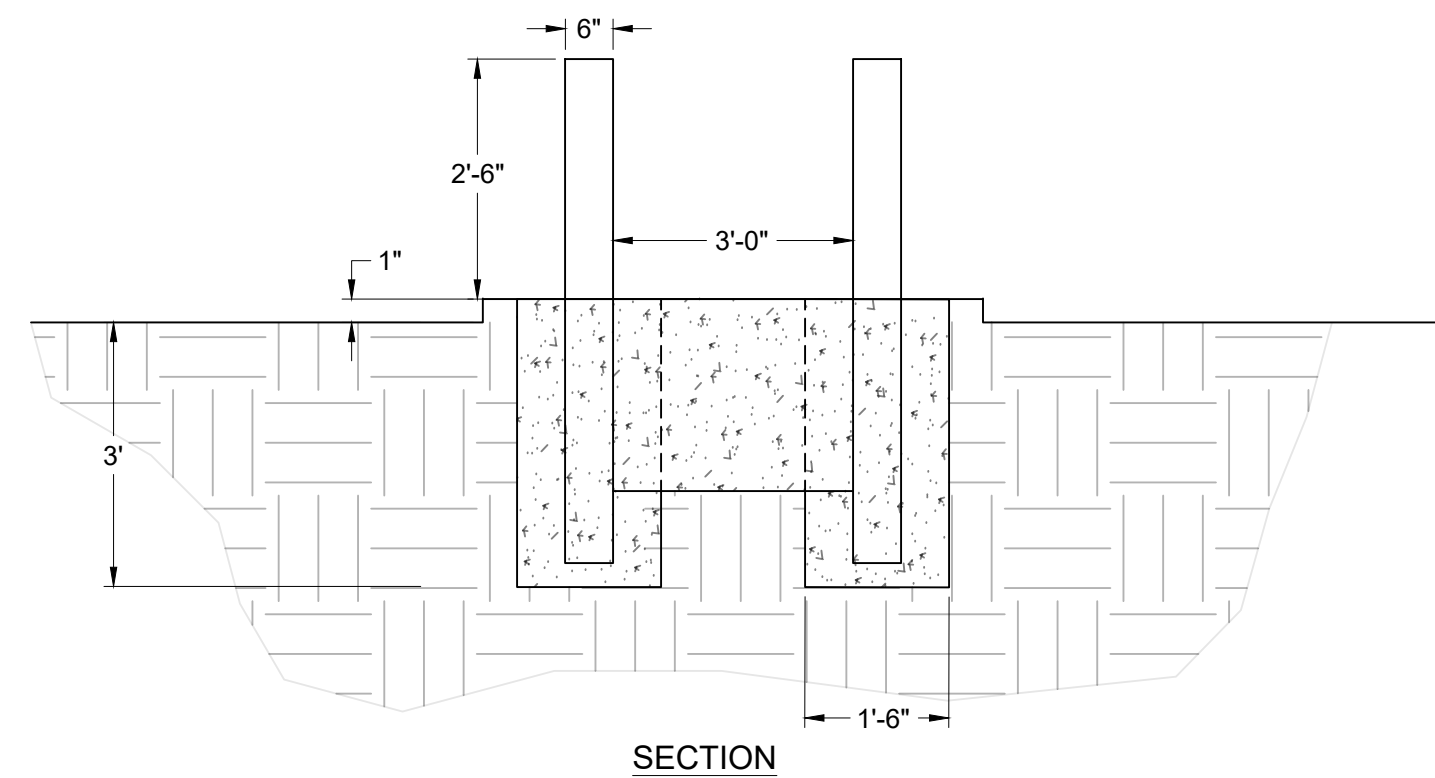
PEDESTAL MOUNT CHARGER

10 CHARGING STATION DETAIL

NTS



PLAN



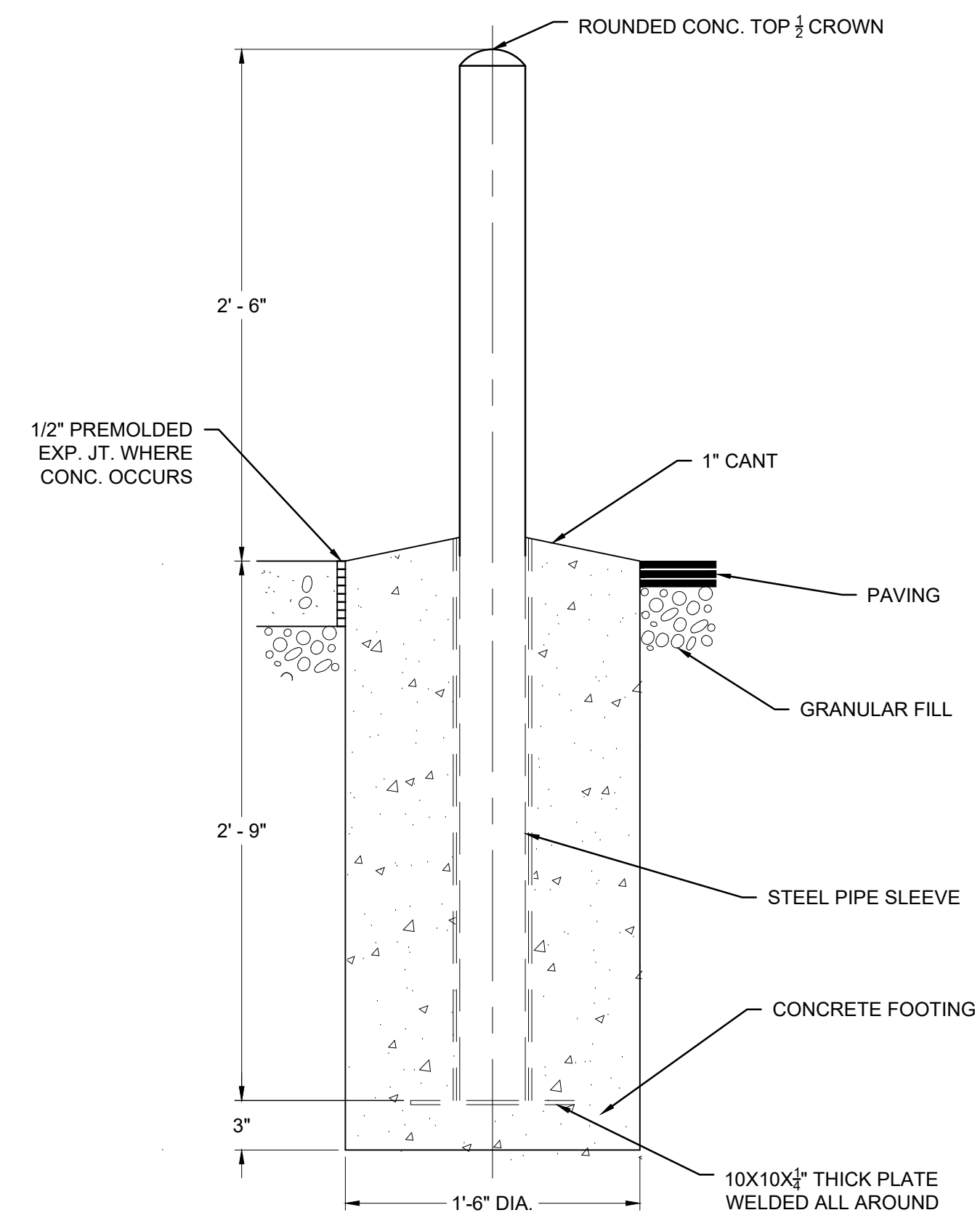
SECTION

NOTE:

- BOLLARD PROTECTION MAY NOT BE REQUIRED AT ALL FACILITIES. DETAIL IS DEPENDENT ON SITE CONDITIONS AND FINAL LAYOUT AT THE FACILITY.

3 EV CHARGING STATION BOLLARD PROTECTION

NTS

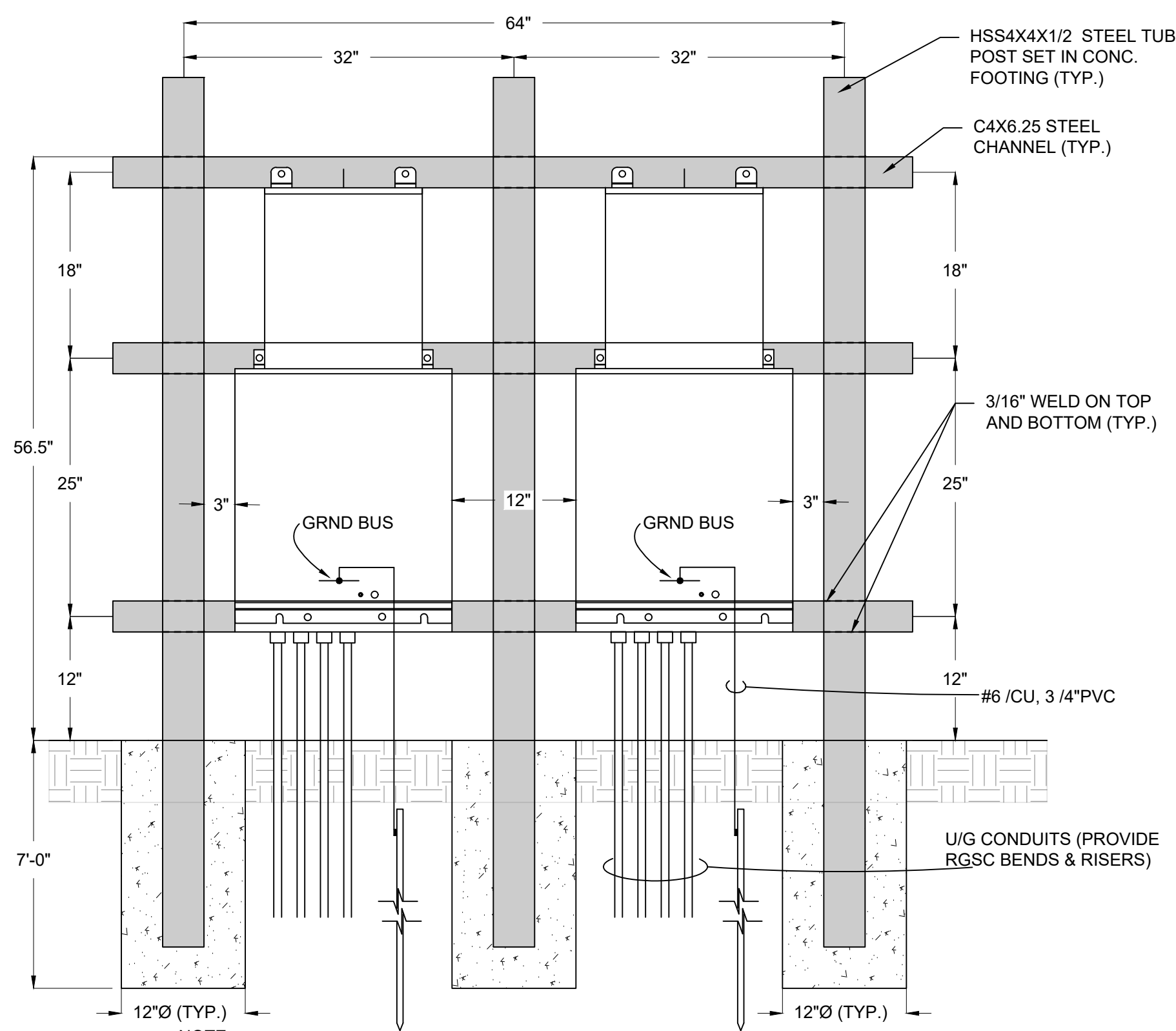


NOTES:

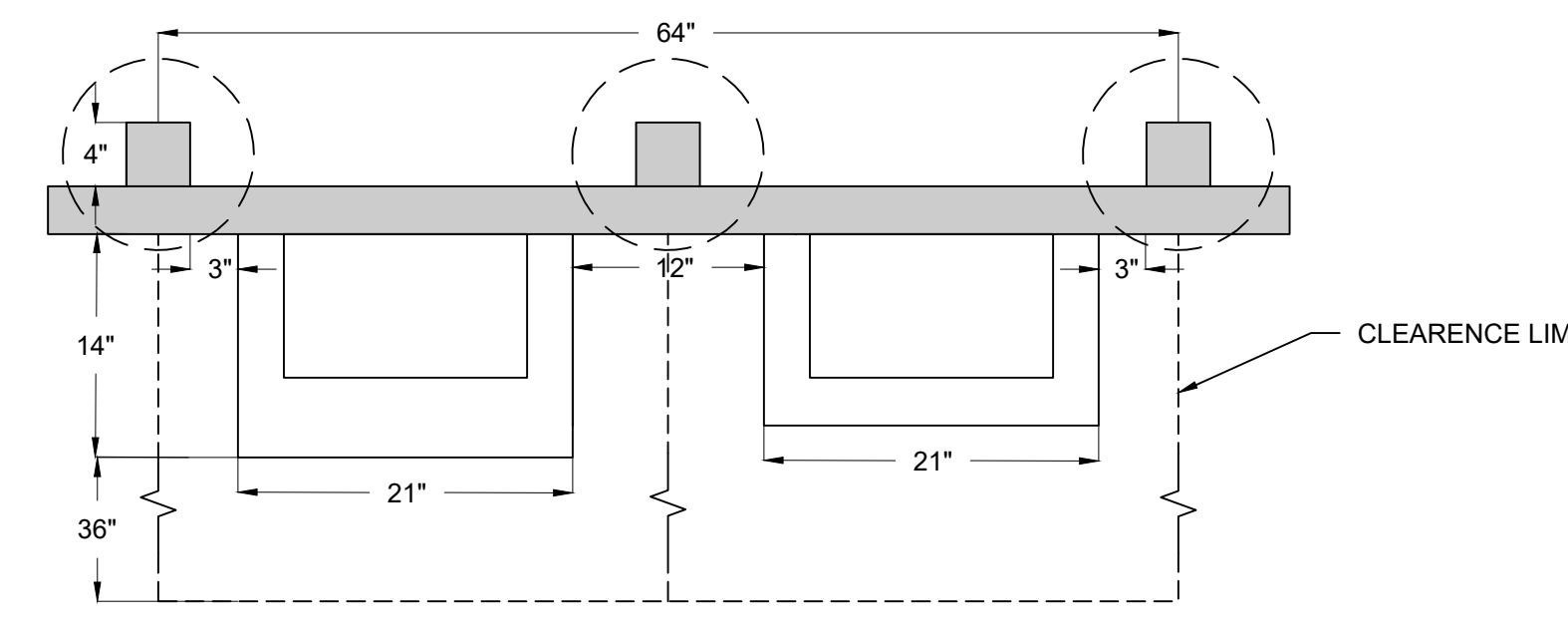
- CONTRACTOR SHALL UTILIZE GALVANIZED COATED OR FULLY PAINT STEEL PIPE WITH AN EXTERIOR RUST INHIBITIVE PAINT PRIOR TO INSTALLATION AND TOUCH UP AFTER INSTALLATION SUCH AS SHERWIN-WILLIAMS MACROPOXY 648 FAST CURE (S58W610), IN ACCORDANCE WITH MANUFACTURERS PREPARATION REQUIREMENTS. PROVIDE A YELLOW (BLUE FOR ADA) BOLLARD COVER SUCH AS A STREET SMART SOLUTIONS POST GUARD, DOME-TOP COVER BY US-POSTMAN.COM OR APPROVED EQUAL DETERRENT BOLLARD.
- BOLLARD PROTECTION MAY NOT BE REQUIRED AT ALL FACILITIES. DETAIL IS DEPENDENT ON SITE CONDITIONS AND FINAL LAYOUT AT THE FACILITY.
- INCREASE DEPTH OF EXTERIOR BOLLARDS AS REQUIRED BY LOCAL FROSTLINE.

4 TYP. SITE PIPE BOLLARD

NTS



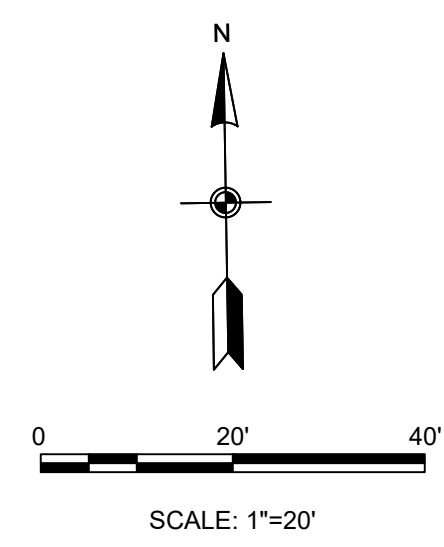
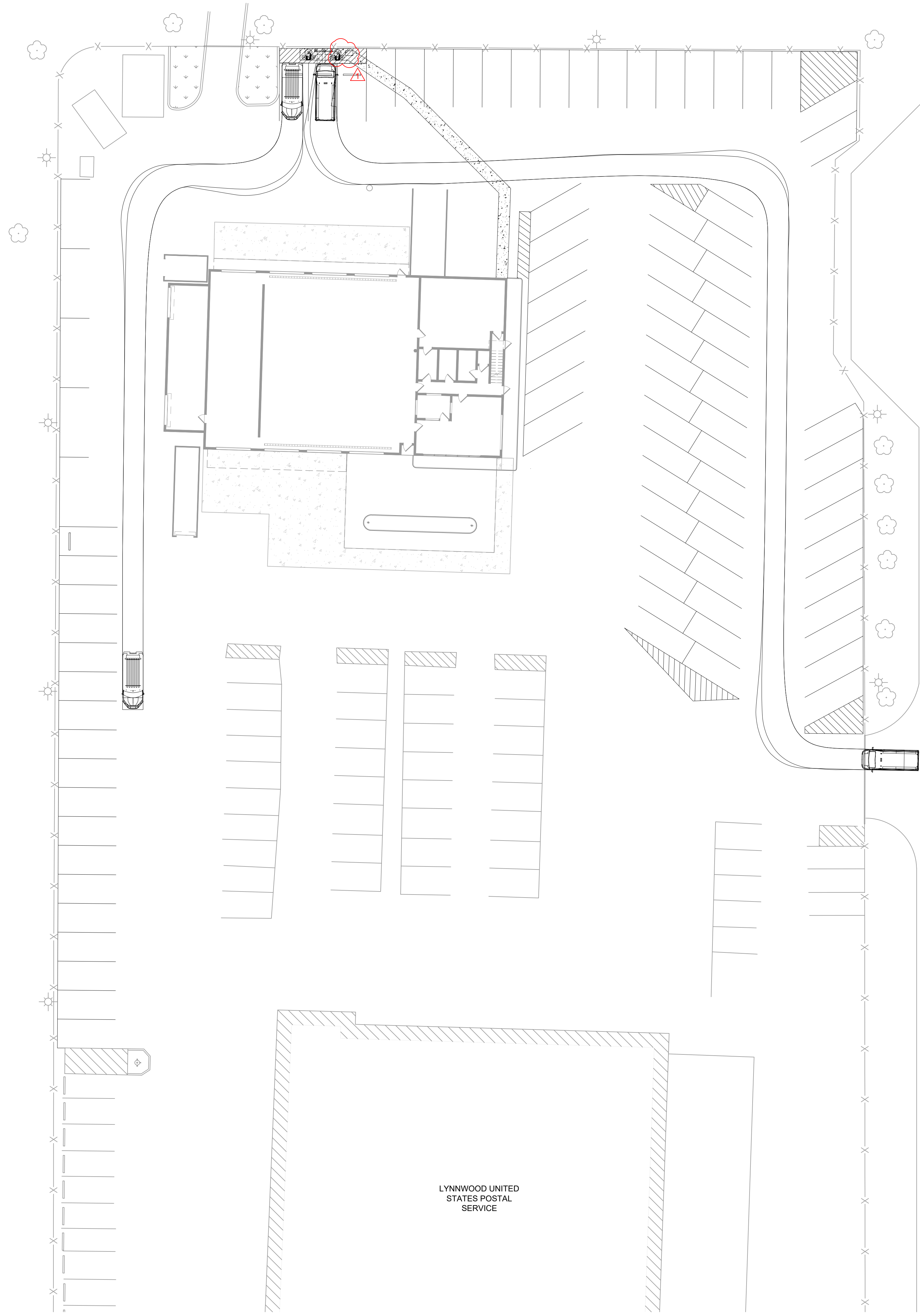
RACK DETAIL



PLAN VIEW

11 ELECTRICAL EQUIPMENT SUPPORT

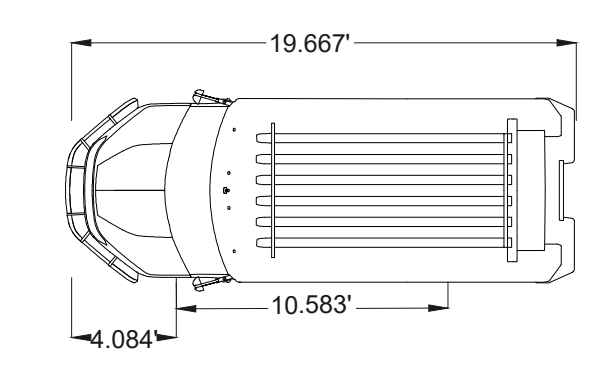
NTS



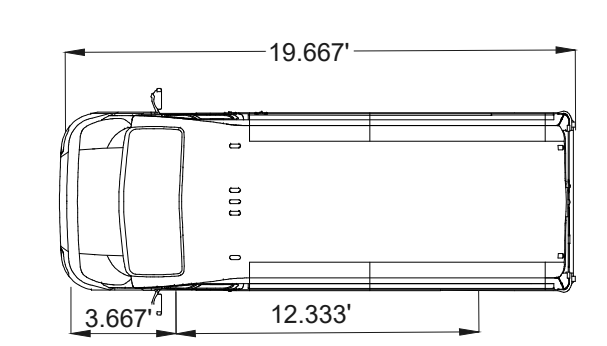
- LEGEND**
- EXISTING GRASS AREA
 - EXISTING PAINT STRIPING
 - EXISTING FENCE
 - EXISTING GATE
 - EXISTING BOLLARD
 - EXISTING LIGHT POST
 - EXISTING TREE
 - PROPOSED PAINT STRIPING
 - PROPOSED PAVEMENT RESTORATION
 - NGDV PATH
 - COTS PATH

- NOTES:**
1. NO TITLE SEARCH OR PROPERTY BOUNDARY SURVEY WAS COMPLETED FOR THIS PROJECT. NO BOUNDARY LINES ARE DEPICTED ON THIS DATABASE.
 2. A SUBSURFACE UTILITY INVESTIGATION HAS NOT BEEN PERFORMED BY WSP. WASHINGTON UTC SHOULD BE CONTACTED PRIOR TO COMMENCING ANY EXCAVATION. (800-424-5555). STORM AND SEWER CONNECTIONS WERE EXCLUDED FROM THIS SCOPE OF SERVICE AND ARE NOT SHOWN HEREON.
 3. COORDINATES SHOWN BASED ON PUBLICLY AVAILABLE DATA. CONTRACTOR TO ESTABLISH BEARINGS AND COORDINATES SHOWN HEREON. IF ANY, ARE BASED ON THE WASHINGTON STATE PLANE COORDINATE SYSTEM, NORTH ZONE, NORTH AMERICAN DATUM OF 1983.
 4. ELEVATIONS SHOWN HEREON ARE BASED ON THE NORTH AMERICAN VERTICAL DATUM OF 1988 (NAVD 88) (GEOID 12B).
 5. FINAL LOCATIONS TO BE FIELD VERIFIED PRIOR TO FINAL INSTALLATION. DEVIATIONS TO BE COORDINATED WITH OWNER AND ENGINEER.
 6. CONTRACTOR TO REPAIR ALL SIZEABLE CRACKS ALONG EXISTING CONCRETE.
 7. CONTRACTOR TO REPAINT ALL EXISTING BOLLARDS ON SITE.

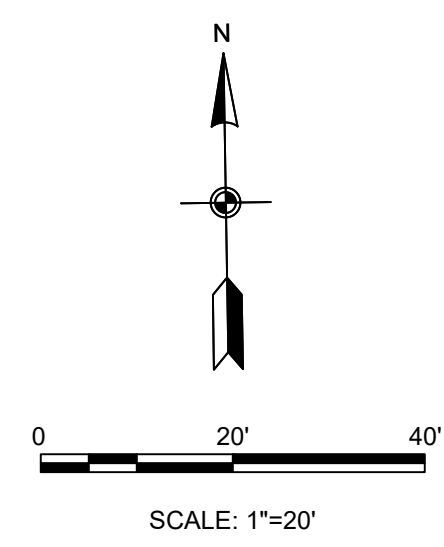
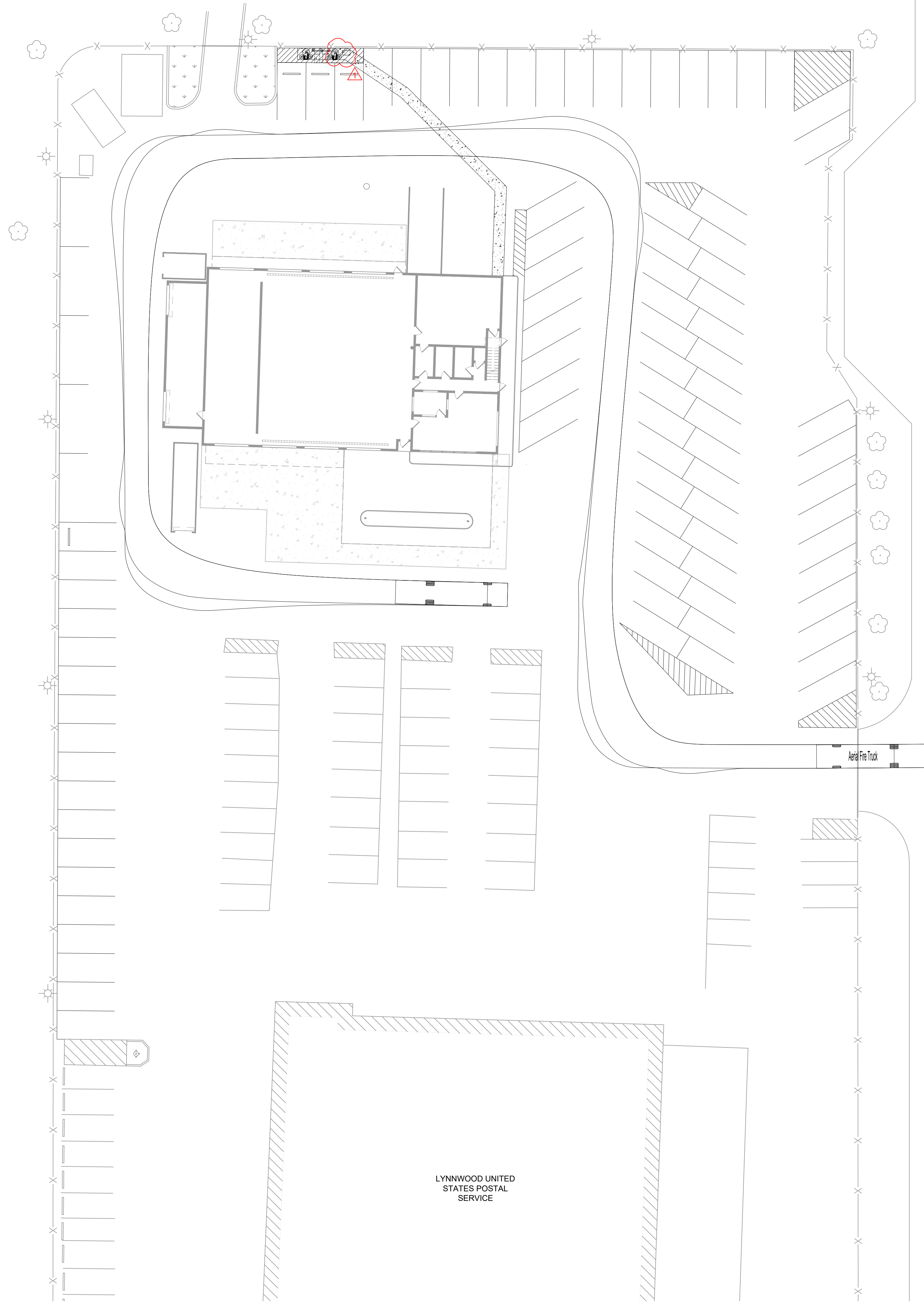
VEHICLE PROFILE



NGDV	
OVERALL LENGTH	19.667 FT
OVERALL WIDTH	7.083 FT
OVERALL BODY HEIGHT	9.500 FT
CURB TO CURB TURNING RADIUS	22.000 FT



COTS	
OVERALL LENGTH	19.667 FT
OVERALL WIDTH	6.833 FT
OVERALL BODY HEIGHT	8.500 FT
CURB TO CURB TURNING RADIUS	20.000 FT



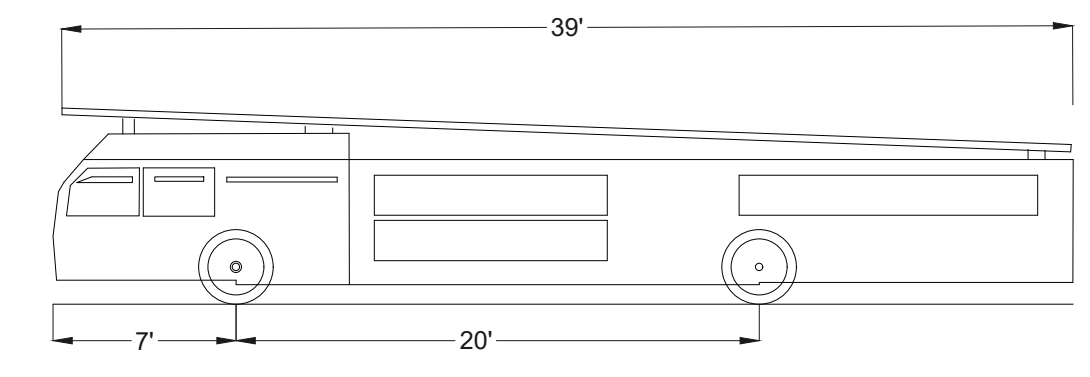
LEGEND

- EXISTING GRASS AREA
- EXISTING PAINT STRIPING
- EXISTING FENCE
- EXISTING GATE
- EXISTING BOLLARD
- EXISTING LIGHT POST
- EXISTING TREE
- PROPOSED PAINT STRIPING
- PROPOSED PAVEMENT RESTORATION
- FIRE TRUCK PATH

NOTES:

1. NO TITLE SEARCH OR PROPERTY BOUNDARY SURVEY WAS COMPLETED FOR THIS PROJECT. NO BOUNDARY LINES ARE DEPICTED ON THIS DATABASE.
2. A SUBSURFACE UTILITY INVESTIGATION HAS NOT BEEN PERFORMED BY WSP. WASHINGTON UTC SHOULD BE CONTACTED PRIOR TO COMMENCING ANY EXCAVATION. (800-424-5555). STORM AND SEWER CONNECTIONS WERE EXCLUDED FROM THIS SCOPE OF SERVICE AND ARE NOT SHOWN HEREON.
3. COORDINATES SHOWN BASED ON PUBLICLY AVAILABLE DATA. CONTRACTOR TO ESTABLISH BEARINGS AND COORDINATES SHOWN HEREON. IF ANY, ARE BASED ON THE WASHINGTON STATE PLANE COORDINATE SYSTEM, NORTH ZONE, NORTH AMERICAN DATUM OF 1983.
4. ELEVATIONS SHOWN HEREON ARE BASED ON THE NORTH AMERICAN VERTICAL DATUM OF 1988 (NAVD 88) (GEOID 12B).
5. FINAL LOCATIONS TO BE FIELD VERIFIED PRIOR TO FINAL INSTALLATION. DEVIATIONS TO BE COORDINATED WITH OWNER AND ENGINEER.
6. CONTRACTOR TO REPAIR ALL SIZEABLE CRACKS ALONG EXISTING CONCRETE.
7. CONTRACTOR TO REPAINT ALL EXISTING BOLLARDS ON SITE.

VEHICLE PROFILE



AERIAL FIRE TRUCK

OVERALL LENGTH	39.00 FT
OVERALL WIDTH	8.167 FT
OVERALL BODY HEIGHT	7.500 FT
MINIMUM BODY GROUND CLEARANCE	0.750 FT
TRACK WIDTH	8.167 FT
LOCK-TO-LOAD TIME	5.00 S
MAXIMUM WHEEL ANGLE	45.00°

LYNNWOOD UNITED STATES POSTAL SERVICE

68TH AVE W

68TH AVE W